
**COSPAS-SARSAT
MISSION CONTROL CENTRES
STANDARD INTERFACE
DESCRIPTION**

C/S A.002
Issue 4 - Revision 12
October 2008



This document has been superseded
by a later version

COSPAS-SARSAT MISSION CONTROL CENTRES
STANDARD INTERFACE DESCRIPTION

History

| <u>Issue</u> | <u>Revision</u> | <u>Date</u> | <u>Comments</u> |
|--------------|-----------------|---------------|---|
| 1 | 0 | February 1987 | Original issue approved by CSSC. |
| 2 | 0 | November 1988 | Approved by Council (CSC-1). |
| 3 | 0 | December 1991 | Approved by Council (CSC-7). |
| 4 | 0 | December 1997 | Approved by Council (CSC-19). |
| 4 | 1 | June 1998 | Agreed at JC-12. |
| 4 | 2 | October 1999 | Approved by Council (CSC-23). |
| 4 | 3 | October 2000 | Approved by Council (CSC-25). |
| 4 | 4 | June 2001 | Revised Annexes A, B, C, E and F agreed at JC-15. |
| 4 | 5 | June 2002 | Revised Annexes A, B and C agreed at JC-16. |
| 4 | 6 | June 2003 | Revised Annexes B and F agreed at JC-17. |
| 4 | 7 | October 2003 | Approved by Council (CSC-31). |
| 4 | 8 | October 2004 | Approved by Council (CSC-33). |
| 4 | 9 | November 2005 | Approved by Council (CSC-35). |
| 4 | 10 | October 2006 | Approved by Council (CSC-37). |
| 4 | 11 | November 2007 | Approved by Council (CSC-39). |
| 4 | 12 | October 2008 | Approved by Council (CSC-41). |

LIST OF PAGES

| <u>Page #</u> | <u>Date of latest revision</u> | <u>Page #</u> | <u>Date of latest revision</u> | <u>Page #</u> | <u>Date of latest revision</u> |
|---------------|--------------------------------|---------------|--------------------------------|---------------|--------------------------------|
| cover | Oct 08 | B-20 | Oct 06 | D-1 | Dec 97 |
| i | Oct 08 | B-21 | Nov 07 | D-2 | Dec 97 |
| ii | Oct 08 | B-22 | Nov 07 | | |
| iii | Oct 06 | B-23 | Nov 07 | E-1 | Oct 00 |
| iv | Oct 06 | B-24 | Oct 06 | E-2 | Oct 00 |
| v | Oct 06 | B-25 | Oct 06 | E-3 | Oct 00 |
| vi | Oct 06 | B-26 | Oct 06 | E-4 | Oct 00 |
| | | B-27 | Oct 04 | E-5 | Oct 00 |
| 1-1 | Oct 04 | B-28 | Oct 04 | E-6 | Jun 01 |
| 1-2 | Oct 04 | B-29 | Oct 04 | E-7 | Jun 01 |
| | | B-30 | Oct 04 | E-8 | Oct 00 |
| 2-1 | Oct 04 | | | E-9 | Oct 00 |
| 2-2 | Oct 04 | C-1 | Nov 07 | E-10 | Oct 00 |
| | | C-2 | Oct 06 | E-11 | Oct 00 |
| 3-1 | Oct 04 | C-3 | Nov 07 | E-12 | Oct 00 |
| 3-2 | Oct 04 | C-4 | Oct 06 | | |
| | | C-5 | Nov 07 | F-1 | Nov 07 |
| 4-1 | Oct 04 | C-6 | Oct 06 | F-2 | Nov 07 |
| 4-2 | Oct 00 | C-7 | Oct 06 | F-3 | Nov 07 |
| 4-3 | Dec 97 | C-8 | Oct 06 | F-4 | Oct 06 |
| 4-4 | Dec 97 | C-9 | Nov 07 | F-5 | Oct 06 |
| 4-5 | Dec 97 | C-10 | Oct 06 | F-6 | Oct 06 |
| 4-6 | Dec 97 | C-11 | Oct 06 | | |
| | | C-12 | Oct 08 | G-1 | Nov 05 |
| A-1 | Oct 06 | C-13 | Oct 08 | G-2 | Nov 05 |
| A-2 | Nov 07 | C-14 | Nov 07 | | |
| A-3 | Oct 08 | C-15 | Oct 08 | H-1 | Oct 04 |
| A-4 | Oct 06 | C-16 | Oct 08 | H-2 | Oct 06 |
| | | C-17 | Oct 08 | H-3 | Oct 04 |
| B-1 | Oct 04 | C-18 | Oct 08 | H-4 | Oct 04 |
| B-2 | Oct 06 | C-19 | Oct 08 | H-5 | Oct 04 |
| B-3 | Oct 06 | C-20 | Nov 07 | H-6 | Oct 04 |
| B-4 | Oct 04 | C-21 | Nov 07 | | |
| B-5 | Oct 04 | C-22 | Nov 07 | I-1 | Oct 08 |
| B-6 | Nov 07 | C-23 | Oct 06 | I-2 | Oct 08 |
| B-7 | Oct 04 | C-24 | Oct 06 | I-3 | Oct 08 |
| B-8 | Oct 04 | C-25 | Oct 06 | I-4 | Oct 08 |
| B-9 | Oct 04 | C-26 | Oct 06 | I-5 | Oct 08 |
| B-10 | Oct 06 | C-27 | Oct 08 | I-6 | Oct 08 |
| B-11 | Oct 06 | C-28 | Oct 06 | | |
| B-12 | Oct 04 | C-29 | Oct 06 | J-1 | Oct 04 |
| B-13 | Oct 06 | C-30 | Oct 06 | J-2 | Oct 04 |
| B-14 | Oct 04 | C-31 | Oct 06 | | |
| B-15 | Nov 07 | C-32 | Oct 06 | | |
| B-16 | Oct 04 | C-33 | Oct 06 | | |
| B-17 | Oct 08 | C-34 | Nov 07 | | |
| B-18 | Nov 05 | C-35 | Oct 08 | | |
| B-19 | Oct 06 | C-36 | Oct 08 | | |

TABLE OF CONTENTS

| | Page |
|--|-------------|
| <hr/> | |
| 1. INTRODUCTION | 1-1 |
| 1.1 Overview | 1-1 |
| 1.2 Document Objective..... | 1-1 |
| 1.3 Required Implementation Data | 1-2 |
| 1.4 Reference Documents..... | 1-2 |
| 1.5 Document Amendments and Updates | 1-2 |
| 2. COMMUNICATION CHANNEL INTERFACES..... | 2-1 |
| 2.1 Voice Communication Facilities..... | 2-1 |
| 2.2 Data Communication Facilities..... | 2-1 |
| 2.2.1 Cospas-Sarsat Message Text..... | 2-1 |
| 2.2.2 Subject Indicator Types (SITs) | 2-2 |
| 2.2.3 Character Text..... | 2-2 |
| 3. COMMUNICATION STANDARDS..... | 3-1 |
| 3.1 X.25 Communications..... | 3-1 |
| 3.2 File Transfer Protocol (FTP) Communications..... | 3-1 |
| 3.3 Telex Communications..... | 3-2 |
| 3.4 AFTN/AMHS Communications..... | 3-2 |
| 4. MESSAGE FORMAT..... | 4-1 |
| 4.1 Format Requirements | 4-1 |
| 4.2 Character Set..... | 4-2 |

LIST OF TABLES:

| | | |
|-----------|--|-----|
| Table 4.1 | International Alphabet No.5 (IA5) | 4-3 |
| Table 4.2 | International Telegraph Alphabet No.2 (ITA2) | 4-4 |
| Table 4.3 | Equivalents for Translation between International Telegraph Alphabet No.2 and International Alphabet No.5 | 4-5 |
| Table A.1 | Subject Indicator Types for Alert Messages | A-2 |
| Table A.2 | Subject Indicator Types for System Information and Narrative Messages | A-3 |
| Table A.3 | SIT Number Assignment | A-4 |
| Table B.1 | Message Fields Description..... | B-2 |
| Table C.1 | Message Content for Alert Messages | C-2 |
| Table C.2 | Message Content for System Information and Narrative Messages | C-4 |
| Table C.3 | Message Content for SIT 185 Messages | C-6 |
| Table F.1 | FTP Password Special Characters | F-4 |
| Table H.1 | Suggested AFTN Priority for SIT Messages | H-4 |
| Table I.1 | Nodal to Nodal Communications Activation/Verification Check List | I-3 |
| Table I.2 | Target Implementation Dates for Nodal MCC Communications..... | I-3 |
| Table I.3 | Phase III: Western DDR Communications Activation/Verification Check List | I-4 |
| Table I.4 | Phase III: Central DDR Communications Activation/Verification Check List..... | I-4 |
| Table I.5 | Phase III: Eastern DDR Communications Activation/Verification Check List | I-5 |
| Table I.6 | Phase III: Southwest Pacific DDR Communications Activation/Verification Check List..... | I-5 |
| Table I.7 | Phase III: Northwest Pacific DDR Communications Activation/Verification Check List..... | I-6 |
| Table I.8 | Phase III: South Central DDR Communications Activation/Verification Check List..... | I-6 |

LIST OF FIGURES:

| | | |
|------------|--|------|
| Figure 4.1 | General Message Structure | 4-1 |
| Figure B.1 | Using Unlocated Alerts to Determine and Flag the Image Position..... | B-25 |
| Figure B.2 | Algorithm to Determine if Computed Position is Inside Satellite Footprint..... | B-26 |
| Figure B.3 | Message Sequence Checking Flowchart..... | B-28 |
| Figure B.4 | Missed Message List Monitoring Flowchart..... | B-29 |
| Figure E.1 | Phases of an X.25 Connection | E-4 |
| Figure E.2 | Packet Flow in a Typical X.25 Connection | E-4 |

LIST OF FIGURES (Cont.):

| | | |
|------------|---|------|
| Figure E.3 | Clearing Procedure if ITC Fails..... | E-7 |
| Figure E.4 | Clearing Procedure by Called MCC..... | E-8 |
| Figure E.5 | X.25 Network Message Reception Procedure for the Called MCC..... | E-9 |
| Figure E.6 | X.25 Network Message Transmission Procedure for the Calling MCC | E-10 |
| Figure H.1 | Message Format International Telegraph Alphabet No.2 (ITA2) | H-5 |
| Figure H.2 | Message Format International Alphabet No.5 (IA5) | H-6 |

LIST OF ANNEXES:

| | | |
|--------------|--|------|
| Annex A | Subject Indicator Types (SITs)..... | A-1 |
| Annex B | Message Fields Description..... | B-1 |
| Appendix B.1 | Message Fields Definition..... | B-11 |
| Appendix B.2 | Determining the 406 MHz LEOSAR Image Position | B-24 |
| Appendix B.3 | Suggested Algorithm for Message Sequence Tracking | B-27 |
| Annex C | Message Content by SIT | C-1 |
| Appendix C.1 | Sample Messages | C-7 |
| Annex D | Useful Information (Standard Message Formats between MCC and RCC)..... | D-1 |
| Annex E | Cospas-Sarsat Protocol for the Transmission of SIT Messages via the X.25 Network . | E-1 |
| Appendix E.1 | X.25 Connection Procedures..... | E-9 |
| Appendix E.2 | Definition of X.25 Terms | E-11 |
| Annex F | Cospas-Sarsat Standard for the Transmission of SIT Messages via FTP..... | F-1 |
| Annex G | Cospas-Sarsat Standard for the Transmission of SIT Messages via Hardware VPN.... | G-1 |
| Annex H | Cospas-Sarsat Standard for the Transmission of SIT Messages via AFTN | H-1 |
| Annex I | Implementation Plan for New Communication Links | I-1 |
| Annex J | List of Abbreviations and Acronyms Used in C/S A.002..... | J-1 |

page left blank

This document has been superseded
by a later version

1. INTRODUCTION

1.1 Overview

The purpose of the Cospas-Sarsat System is to provide distress alert and location data for search and rescue (SAR) by using spacecraft and ground facilities to detect and locate distress signals. The computed position of the distress and other related information is transmitted to appropriate SAR authorities.

Distress beacons (Emergency Locator Transmitters - ELTs, Emergency Position Indicating Radio Beacons - EPIRBs, Personal Locator Beacons - PLBs) transmit signals that are detected by Cospas-Sarsat polar-orbiting or geostationary spacecraft. These signals are relayed to Cospas-Sarsat ground receiving stations termed Local User Terminals (LUTs), which process the signals to determine the beacon location. Alerts are then relayed, together with location data, via a Mission Control Centre (MCC), either to another MCC or to the appropriate search and rescue point of contact (SPOC) to initiate SAR activities.

The frequencies currently in use are 121.5 MHz, 243 MHz and 406 MHz.

Each MCC distributes Cospas-Sarsat messages according to the System document C/S A.001 "Cospas-Sarsat Data Distribution Plan" which defines the Cospas-Sarsat ground communication network. Cospas-Sarsat messages are sent in formats which permit the data to be automatically processed and transmitted. These message formats are referenced in this document C/S A.002 "Cospas-Sarsat Mission Control Centres Standard Interface Description".

1.2 Document Objective

The Cospas-Sarsat System is operated in accordance with the 1988 International Cospas-Sarsat Programme Agreement and other related documents. The purpose of this document C/S A.002 (SID) is to describe the message formats and communication standards required to transmit data between Cospas-Sarsat MCCs. It is designed to facilitate information exchange between Cospas-Sarsat MCCs and between those MCCs and Rescue Coordination Centres (RCCs) of countries without MCCs.

This document specifies the structure and content of the information portion of Cospas-Sarsat messages regardless of the communication network to be used. For an operational implementation, the information portion will of necessity be framed with the addressing, header and trailer data required by the specific network protocol.

1.3 Required Implementation Data

The following information must be agreed upon between two agencies establishing a communications interface:

- a. Network and protocols to be used.
- b. Data rate.
- c. Addressing/routing.
- d. Packet size constraints.
- e. Security (e.g., password, call identification and caller user data).

1.4 Reference Documents

- a. C/S T.001 "Specification for Cospas-Sarsat 406 MHz Distress Beacons".
- b. C/S A.001 "Cospas-Sarsat Data Distribution Plan".

1.5 Document Amendments and Updates

- a. Amendments of message formats which affect all MCCs require recommendation for change by the Joint Committee (JC) and approval by the Cospas-Sarsat Council (CSC).
- b. Formats and content of any messages which are exchanged between two MCCs on a bilateral basis only, may be amended by mutual agreement. Written notification of changes will be provided to the Cospas-Sarsat Secretariat for document control and formal amendment.
- c. If any two MCCs find the need to introduce a new message format which is strictly used bilaterally, details will be submitted to the Cospas-Sarsat Secretariat who will assign a Subject Indicator Type (SIT) code to the message and publish the relevant amendment.

- END OF SECTION 1 -

2. COMMUNICATION CHANNEL INTERFACES

Two types of communications are required among the Cospas-Sarsat MCCs. Voice communication is required for general coordination and follow-up/confirmation of certain automated message transmissions. Data communication using formatted messages are required for the transfer of Cospas-Sarsat alert data and System information.

2.1 Voice Communication Facilities

Voice communications are made over the public dial-up telephone network or other available networks. Voice communication will not be discussed further in this document.

2.2 Data Communication Facilities

All text and data transmissions between MCCs, including alert messages and System information messages, shall be made in character text format only. The information transmitted in character format shall be sent in accordance with Table 4.3. Each respective MCC is responsible for:

- a. making the necessary provisions for connecting to the appropriate communication networks; and
- b. implementing MCC to MCC communications on the selected communication networks in accordance with the standards described in the Annexes to this document.

Participating countries may bilaterally choose to implement primary and alternate communications systems.

2.2.1 Cospas-Sarsat Message Text

All Cospas-Sarsat messages contain specified types of information. Each one of these information types, called a Message Field (MF), is described in greater detail in Annex B. These message fields are then grouped as shown in Annex C to produce the messages for the various Subject Indicator Types (SITs) listed in Annex A.

Originators of operational messages should endeavor to provide actual values in all fields indicated by the letter "A" in Tables C-1 and C-2. Fields indicated by the letter "X" must not be omitted, but may use default values if actual data is not available.

2.2.2 Subject Indicator Types (SITs)

The types of messages that are exchanged between the MCCs are listed in Annex A. Each type of message is identified by a SIT. The SIT is used to facilitate automatic message handling. Annex A lists the SIT code numbers and their assigned use. Annex C defines the content of each of the SIT messages.

2.2.3 Character Text

This specification is based on a text format using International Alphabet No.5 representation. To provide for use on networks using the International Telegraph Alphabet No.2 (ITA2) characters, a table of equivalence between the International Alphabet No.5 character representation and ITA2 is provided in Table 4.3.

- END OF SECTION 2 -

This document has been superseded
by a later version

3. COMMUNICATION STANDARDS

The message formats presented in this document provide flexibility, efficiency, and compatibility among MCCs. They are independent of the communication network and protocol employed.

All MCC messages are formed as a series of octets (one octet is 8 bits, or one byte). A message may be made up of any number of octets, subject to the restriction in section 4.

The communication networks accepted for MCC to MCC communications are introduced below and the standards to which each MCC must adhere for their use in the Cospas-Sarsat Ground Segment are described in the Annexes to this document. Some of these networks provide an error detection and/or error correction capability for detecting and correcting data errors introduced by the communications system.

It is the responsibility of the MCC accepting data to implement adequate security and to co-ordinate security measures with other MCCs from whom it will receive data. All MCCs with an Internet connection must be protected by firewall technology.

3.1 X.25 Communications

The X.25 protocol provides an inherent error detection and correction capability required for reliable communications between Cospas-Sarsat MCCs. Guidance for using X.25 for MCC to MCC communications is provided at Annex E to this document.

While the X.25 network allows MCCs to establish real-time data links, the CCITT recommendations themselves do not specify how messages should be exchanged over these links. Therefore, Annex E provides the Cospas-Sarsat standards for exchanging data between MCCs. In addition to Annex E, MCCs are expected to follow the recommendations of the CCITT which can be found in the publication "CCITT Blue Book, (Volume VIII – Fascicle VIII.2) Data Communication Networks: Services and Facilities, Interfaces Recommendations X.1-X.32.

Due to the fact that X.25 services are being terminated in many countries and because of increasing user costs, X.25 is being phased-out for MCC to MCC communications.

3.2 File Transfer Protocol (FTP) Communications

FTP is an Internet based protocol that can be used to exchange messages between Cospas-Sarsat MCCs. It is highly reliable due to its inherent error detection and correction capability. Each MCC communicating via FTP shall comply with the applicable standards described in the Internet Engineering Task Group document RFC 959 – File Transfer Protocol. In

addition, MCCs communicating via FTP shall comply with the Cospas-Sarsat standards contained in Annex F.

All FTP servers used for the exchange of SIT messages should be linked exclusively using Internet VPNs that meet the Cospas-Sarsat standard provided at Annex G.

3.3 Telex Communications

Telex provides point-to-point communications for text messages. The system operates at extremely low data rates (i.e. 50 or 100 baud), provides no inherent error detection or correction capability, and can be expensive to operate. Because of these limitations Telex is being phased-out for MCC to MCC communications in the Cospas-Sarsat System.

3.4 AFTN/AMHS Communications

The aeronautical fixed telecommunications network (AFTN) is a worldwide system that provides point-to-point communications for text messages. Access to the AFTN network is restricted to terminals that are operated in controlled locations, such as Air Traffic Control Centres and MCCs. The network operates at fairly low data rates (i.e. 300 or 9600 baud). Communications procedures for the AFTN are controlled by ICAO and are detailed in Annex 10 to the Convention on International Civil Aviation, Volume II, Communication Procedures. Guidance for using AFTN for MCC to MCC communications is provided at Annex H to this document.

AFTN is being upgraded by ICAO to the Aeronautical Message Handling System (AMHS). The transition from AFTN to AMHS will be implemented gradually to meet the requirements of Administrations. This transition is expected to enhance communication services in several regions of the world and should not negatively impact the use of AFTN communications by Cospas-Sarsat.

- END OF SECTION 3 -

4. MESSAGE FORMAT

4.1 Format Requirements

All Cospas-Sarsat messages shall be framed as shown in Figure 4.1. The structure of the frames are specified by the host network and they do not impact on the actual Cospas-Sarsat information transmitted.

For the entire message, including the required network framing, the number of characters on any one line shall not exceed 69. This does not include the New Line (NL) sequence described below.

Each line shall end with a new line (NL) sequence that is defined as CRCRLF or CRLF where

CR means Carriage Return - Hex 0D (i.e. zero D)

LF means Line Feed - Hex 0A (i.e. zero A)

The entire message including any network required framing shall not exceed 25,000 characters.

However, message originators may need to further limit message size depending on specific network constraints.

| Format Frame | Contents |
|--------------------------------|---|
| HEADER (network dependent) | Made available to satisfy the host network requirements if any. These contents must be designed into the application software of the agency using the network. |
| INFORMATION (SIT message) | Cospas-Sarsat message text as defined in this document, irrespective of the network in use. |
| TRAILER (network dependent) | As per HEADER above. |

Figure 4.1 : General Message Structure

Since some communication networks may add a Header that precedes the SIT message, MCCs must be able to identify the beginning of a SIT message. The presence of SIT Message Fields 1 - 3 shall be used to identify the beginning of a SIT message. That is, Message Fields 1 - 3 shall have the format “/nnnnn nnnnn/nnnn/nnn nn nnnn”, where n is a numeral between 0 - 9.

4.2 Character Set

The set of International Alphabet No.5 characters that have an equivalent ITA2 character is the set of allowable characters for the INFORMATION frame of Figure 4.1.

To ensure compatibility, Tables 4.1, 4.2 and 4.3 provide details of those characters. Table 4.1 defines the International Alphabet No.5 characters while Table 4.2 illustrates ITA2 characters. Table 4.3 details the conversions between the two character sets.

Characters not found in Table 4.3 are not permitted.

The octothorpe (#) character shall not be used in the information frame of Cospas-Sarsat messages as it is a command character for some networks.

This document has been superseded
by a later version

Table 4.1**International Alphabet No.5 (IA5)**

| | | | | | | | | | | | | |
|----------------|----------------|----------------|----------------|----------|-----|-----|----|---|---|-----|---|-----|
| | | | | b7 -> | 0 | 0 | 0 | 0 | 1 | 1 | 1 | 1 |
| BITS | | | | b6 -> | 0 | 0 | 1 | 1 | 0 | 0 | 1 | 1 |
| | | | | b5 -> | 0 | 1 | 0 | 1 | 0 | 1 | 0 | 1 |
| b ₄ | b ₃ | b ₂ | b ₁ | Column-> | 0 | 1 | 2 | 3 | 4 | 5 | 6 | 7 |
| | | | | Row | | | | | | | | |
| 0 | 0 | 0 | 0 | 0 | NUL | DLE | SP | 0 | @ | P | \ | p |
| 0 | 0 | 0 | 1 | 1 | SOH | DC1 | ! | 1 | A | Q | a | q |
| 0 | 0 | 1 | 0 | 2 | STX | DC2 | " | 2 | B | R | b | r |
| 0 | 0 | 1 | 1 | 3 | ETX | DC3 | # | 3 | C | S | c | s |
| 0 | 1 | 0 | 0 | 4 | EOT | DC4 | \$ | 4 | D | T | d | t |
| 0 | 1 | 0 | 1 | 5 | ENQ | NAK | % | 5 | E | U | e | u |
| 0 | 1 | 1 | 0 | 6 | ACK | SYN | & | 6 | F | V | f | v |
| 0 | 1 | 1 | 1 | 7 | BEL | ETB | ' | 7 | G | W | g | w |
| 1 | 0 | 0 | 0 | 8 | BS | CAN | (| 8 | H | X | h | x |
| 1 | 0 | 0 | 1 | 9 | HT | EM |) | 9 | I | Y | i | y |
| 1 | 0 | 1 | 0 | 10 | LF | SUB | * | : | J | Z | j | z |
| 1 | 0 | 1 | 1 | 11 | VT | ESC | + | ; | K | [| k | { |
| 1 | 1 | 0 | 0 | 12 | FF | FS | , | < | L | / | l | |
| 1 | 1 | 0 | 1 | 13 | CR | GS | - | = | M |] | m | } |
| 1 | 1 | 1 | 0 | 14 | SO | RS | . | > | N | ^ | n | ~ |
| 1 | 1 | 1 | 1 | 15 | SI | US | / | ? | O | ___ | o | DEL |

Table 4.2

International Telegraph Alphabet No.2 (ITA2)

| Combination Number | Code Element | | | | | Character Allocations | |
|-----------------------|--------------|---|---|---|---|--------------------------|---------|
| | 1 | 2 | 3 | 4 | 5 | | |
| 1 | 1 | 1 | 0 | 0 | 0 | A | - |
| 2 | 1 | 0 | 0 | 1 | 1 | B | ? |
| 3 | 0 | 1 | 1 | 1 | 0 | C | : |
| 4 | 1 | 0 | 0 | 1 | 0 | D | WHO R U |
| 5 | 1 | 0 | 0 | 0 | 0 | E | 3 |
| 6 | 1 | 0 | 1 | 1 | 0 | F | |
| 7 | 0 | 1 | 0 | 1 | 1 | G | |
| 8 | 0 | 0 | 1 | 0 | 1 | H | # |
| 9 | 0 | 1 | 1 | 0 | 0 | I | 8 |
| 10 | 1 | 1 | 0 | 1 | 0 | J | BELL |
| 11 | 1 | 1 | 1 | 1 | 0 | K | (|
| 12 | 0 | 1 | 0 | 0 | 1 | L |) |
| 13 | 0 | 0 | 1 | 1 | 1 | M | . |
| 14 | 0 | 0 | 1 | 1 | 0 | N | , |
| 15 | 0 | 0 | 0 | 1 | 1 | O | 9 |
| 16 | 0 | 1 | 1 | 0 | 1 | P | 0 |
| 17 | 1 | 1 | 1 | 0 | 1 | Q | 1 |
| 18 | 0 | 1 | 0 | 1 | 0 | R | 4 |
| 19 | 1 | 0 | 1 | 0 | 0 | S | ' |
| 20 | 0 | 0 | 0 | 0 | 1 | T | 5 |
| 21 | 1 | 1 | 1 | 0 | 0 | U | 7 |
| 22 | 0 | 1 | 1 | 1 | 1 | V | = |
| 23 | 1 | 1 | 0 | 0 | 1 | W | 2 |
| 24 | 1 | 0 | 1 | 1 | 1 | X | / |
| 25 | 1 | 0 | 1 | 0 | 1 | Y | 6 |
| 26 | 1 | 0 | 0 | 0 | 1 | Z | + |
| 27 | 0 | 0 | 0 | 1 | 0 | Carriage Return | |
| 28 | 0 | 1 | 0 | 0 | 0 | Line Feed | |
| 29 | 1 | 1 | 1 | 1 | 1 | Letters Shift | |
| 30 | 1 | 1 | 0 | 1 | 1 | Figures Shift | |
| 31 | 0 | 0 | 1 | 0 | 0 | Space | |
| 32 | 0 | 0 | 0 | 0 | 0 | Not Used | |

Table 4.3**Equivalents for Translation between
International Telegraph Alphabet No.2 and International Alphabet No.5**

| ITA2 Combination No. (Table 4.2 refers) | IA5 Column/Row (Table 4.1 refers) | | Conversion at Interface | |
|--|-----------------------------------|--------------|-------------------------|--------|
| | ITA2 Letters Case | | ITA2 Figures Case | |
| 1 | A | - 4/1, 6/1 | - | - 2/13 |
| 2 | B | - 4/2, 6/2 | ? | - 3/15 |
| 3 | C | - 4/3, 6/3 | : | 3/10 |
| 4 | D | - 4/4, 6/4 | ENQ | - 0/5 |
| 5 | E | - 4/5, 6/5 | 3 | - 3/3 |
| 6 | F | - 4/6, 6/6 | | |
| 7 | G | - 4/7, 6/7 | | |
| 8 | H | - 4/8, 6/8 | # | - 2/3 |
| 9 | I | - 4/9, 6/9 | 8 | - 3/8 |
| 10 | J | - 4/10, 6/10 | BEL | - 0/7 |
| 11 | K | - 4/11, 6/11 | (| - 2/8 |
| 12 | L | - 4/12, 6/12 |) | - 2/9 |
| 13 | M | - 4/13, 6/13 | . | - 2/14 |
| 14 | N | - 4/14, 6/14 | , | - 2/12 |
| 15 | O | - 4/15, 6/15 | 9 | - 3/9 |
| 16 | P | - 5/0, 7/0 | 0/ | - 3/0 |
| 17 | Q | - 5/1, 7/1 | 1 | - 3/1 |
| 18 | R | - 5/2, 7/2 | 4 | - 3/4 |
| 19 | S | - 5/3, 7/3 | . | - 2/7 |
| 20 | T | - 5/4, 7/4 | 5 | - 3/5 |
| 21 | U | - 5/5, 7/5 | 7 | - 3/7 |
| 22 | V | - 5/6, 7/6 | = | - 3/13 |
| 23 | W | - 5/7, 7/7 | 2 | - 3/2 |
| 24 | X | - 5/8, 7/8 | / | - 2/15 |
| 25 | Y | - 5/9, 7/9 | 6 | - 3/6 |
| 26 | Z | - 5/10, 7/10 | + | - 2/11 |
| 27 | CR | - 0/13 | | |
| 28 | LF | - 0/10 | | |
| 29 | SI | - 0/15 | | |
| 30 | SO | - 0/14 | | |
| 31 | SP | - 2/0 | | |
| 32 | NUL | - 0/0 | | |

- END OF SECTION 4 -

page left blank

This document has been superseded
by a later version

**ANNEXES
TO
COSPAS-SARSAT
MISSION CONTROL CENTRES
STANDARD INTERFACE
DESCRIPTION**

This document has been superseded
by a later version

ANNEX A

SUBJECT INDICATOR TYPES (SITs)

1. GENERAL

All Cospas-Sarsat messages are identified by a Subject Indicator Type (SIT) number according to the subject matter being transmitted.

Descriptions of the Subject Indicator Types are included in Tables A.1 and A.2.

2. SIT BLOCK ASSIGNMENT

To maintain a uniqueness between the SIT numbers for all Cospas-Sarsat agencies, Table A.3 subdivides the range of possible numbers, from 000 to 999 by subject and application.

The proper application of this table will ensure a standardization in numbers and in usage to facilitate automatic message handling by the MCCs.

This document has been superseded
by a later version

TABLE A.1**Subject Indicator Types for Alert Messages**

| SIT | | Meaning | Page |
|------------|--|---|--------------|
| 115 | 121.5/243 INCIDENTS | An alert message computed from 121.5 or 243.0 MHz or both incident data. The message contains Doppler position information. | C-8 & C-35 |
| 117 | 121.5/243 AMBIGUITY RESOLUTION | An alert message with Doppler positions that identifies the confirmed position of a 121.5/243 MHz signal. | C-8 |
| 121 | 406 INTERFERER NOTIFICATION | This message is used for notification of 406 MHz interferer signals. | C-9 |
| 122 | 406 INCIDENT (NO DOPPLER) | A 406 MHz alert message with no Doppler positions. An encoded position may or may not be available. | C-10 |
| 123 | 406 POSITION CONFLICT (ENCODED ONLY) | A 406 MHz alert message with no Doppler positions for which the encoded position differs by more than the match criteria from all previous positions. | C-10 |
| 124 | 406 AMBIGUITY RESOLUTION (ENCODED ONLY) | A 406 MHz alert message with no Doppler positions that identifies the resolved position of a 406 MHz alert. | C-10 |
| 125 | 406 INCIDENT | A beacon alert message computed from 406 MHz incident data. The message contains Doppler positions. | C-11 & C-35 |
| 126 | 406 POSITION CONFLICT | A beacon alert message computed from 406 MHz incident data. The message contains Doppler and/or encoded position(s) which may differ from previous position(s) by the match criteria. | C-11 |
| 127 | 406 AMBIGUITY RESOLUTION | A 406 MHz alert message with Doppler positions that identifies the resolved position of a 406 MHz alert. It may or may not contain an encoded position. | C-11 |
| 132 | 406 NOTIFICATION OF COUNTRY OF REGISTRATION (ENCODED ONLY) | This message is used between MCCs to notify the country of registration of a 406 MHz beacon (NOCR). This message contains only an encoded position. | C-10 |
| 133 | 406 NOTIFICATION OF COUNTRY OF REGISTRATION | This message is used between MCCs to notify the country of registration of a 406 MHz beacon (NOCR). This message contains Doppler positions. It may or may not contain an encoded position. | C-11 |
| 185 | COSPAS-SARSAT ALERTS | This message is used for 121.5 / 243 / 406 MHz alert messages and as NOCR message between MCCs and SPOCs. | C-12 to C-22 |

TABLE A.2**Subject Indicator Types for System Information and Narrative Messages**

| SIT | | Meaning | Page |
|--------------------|--|---|---------------------------------|
| 215 | ORBIT VECTORS | Sarsat or Cospas spacecraft orbit position and time message. | C-23 |
| 216 | ORBIT VECTORS | Sarsat or Cospas spacecraft orbit position and time message. Used in special conditions (e.g., after a satellite manoeuvre) when it is required that orbit vectors at the MCC and its associated LUTs be initialized. See C/S A.001, section 3.7.5. | C-23 |
| 415 | SARP CALIBRATION | Time and frequency calibration for a SARP. | C-24 |
| 416 | SARP TELEMETRY | SARP telemetry from a Sarsat spacecraft. | C-25 |
| 417 | SARP-3 CALIBRATION | Time and frequency calibration for a SARP-3. | C-26 |
| 425 | SARP OUT OF LIMIT | Warning message to indicate abnormal performance of the SARP. | C-25 |
| 435 | SARP COMMAND | Command request for the SARP. | C-27 |
| 445 | SARP COMMAND VERIFICATION | Verification of the execution (or non-execution) of a SARP command as requested by command message. | C-25 |
| 510 | 406 MHz SARR FREQUENCY CALIBRATION OFFSET | Offset between actual and 406 MHz SARR-provided beacon frequencies. | C-28 |
| 515 | SARR TELEMETRY | SARR telemetry from a Sarsat spacecraft. | C-25 |
| 525 | SARR OUT OF LIMIT | Warning message to indicate abnormal performance of the SARR. | C-25 |
| 535 | SARR COMMAND | Command request for the SARR. | C-27 |
| 545 | SARR COMMAND VERIFICATION | Verification of the execution (or non-execution) of a SARR command as requested by a SARR COMMAND message. | C-25 |
| 605 | SYSTEM STATUS TO ALL MCCs | Narrative message transmitted to all MCCs to indicate changes in System status. System status messages include System element and System function failures, scheduled maintenance, integration or testing of new System elements, and the commissioning of new equipment or new capabilities of existing equipment. | C-25 & C-29 to C-33 |
| 721 and 722 | Reserved for MEOSAR | | |
| 915 | FOR MCC INFORMATION TRANSMISSION TO A SINGLE MCC | Narrative message for MCC to MCC operator. This is a free format message, except when a specific format is defined (Note 1). | C-25 |
| 925 | 406 BEACON REGISTRATION INFORMATION | This message is used between MCCs to provide 406 MHz beacon registration information. | C-34 |

Note 1: Free format applies only to the message text. The complete message must still be formatted as per the host communication networks procedures.

TABLE A.3
SIT Number Assignment

| Subject Matter | Between Cospas-Sarsat MCCs | Internally by each Cospas-Sarsat Participant | Between Cospas-Sarsat MCCs and non Cospas-Sarsat Agencies | Future Growth |
|------------------|----------------------------|--|---|---------------|
| | | | | 000 - 099 |
| INCIDENTS | 100 - 149 | 150 - 179 | 180 - 199 | |
| ORBIT | 200 - 249 | 250 - 279 | 280 - 299 | |
| | | | | 300 - 399 |
| SARP | 400 - 449 | 450 - 479 | 480 - 499 | |
| SARR | 500 - 549 | 550 - 579 | 580 - 599 | |
| STATUS | 600 - 649 | 650 - 679 | 680 - 699 | |
| LUT | 700 - 749 | 750 - 779 | 780 - 799 | |
| | | | | 800 - 899 |
| NARRATIVE | 900 - 949 | 950 - 979 | 980 - 999 | |

Note: SIT for new messages other than those used internally by each Cospas-Sarsat participant must be coordinated with all Cospas-Sarsat MCCs before being placed in use.

END OF ANNEX A -

ANNEX B

MESSAGE FIELDS DESCRIPTION

1. GENERAL

All Cospas-Sarsat messages can be divided into a series of fields, each field containing unique information. Each of these Message Fields (MF) is described in this Annex in terms of possible characters and range of numbers.

All fields must be present when required for a specific SIT message; no positional field can be omitted from a SIT message.

Message formats and examples by SIT numbers are given in Annex C.

2. MESSAGE FIELD LIST

A detailed description of each Message Field is given in this Annex. Once it is known which MFs form a particular SIT, their corresponding formats are concatenated to form the information frame of the message.

This list is composed of four columns;

- a. Message Field Number (MF#)
- b. Message Field Name (Name)
- c. Content
- d. Character Text

2.1 MF#

The numbers in this column are for simplicity of reference in Annex C.

2.2 Name

This column contains the name of the message field.

2.3 Content

This column contains the value ranges and meanings of the numbers of each MF.

The listed default values are inserted in the field only when the MCC has no proper value to insert.

2.4 Character Text

This column contains the format for each MF. Note that for MF#1 to MF#44, fields are separated by a "/" inserted at the beginning of the field, while the elements within a field are separated by a space (indicated as "b"). For MF#45 to MF#63 all required "/" and spaces (b) are indicated where they are needed. Refer to the notes at the end of the list for more information.

TABLE B.1
Message Fields Description

| MF# | NAME | CONTENT | CHARACTER TEXT | (Note 1) |
|-----|---|---|-------------------|----------|
| 1 | MESSAGE NUMBER | CURRENT MESSAGE ORIGINAL MESSAGE RANGES = 00001 -> 99999 | nnnnn nnnnn | (Note 2) |
| 2 | REPORTING MCC | (SEE TABLE II/A.1 in C/S A.001) | nnnn | |
| 3 | MESSAGE TRANSMIT TIME | YEAR = 00 -> 99 DAY (JULIAN) = 001-> 366 UTC - HRS = 00 -> 23 MINS = 00 -> 59 | nn nnn nnnn | |
| 4 | SIT | (SEE TABLE A.1 & A.2) RANGE = 000 -> 999 | nnn | |
| 5 | DESTINATION MCC | (SEE TABLE II/A.1 in C/S A.001) | nnnn | |
| 6 | SPACECRAFT ID | SARSAT = 001 -> 099 COSPAS = 101 -> 199 GOES = 201 -> 220 LUCH-M = 221 -> 240 INSAT-2, INSAT-3 = 241 -> 260 MSG = 261 -> 280 GPS = 300 -> 399 ¹ Galileo = 400 -> 499 GLONASS = 500 -> 599 (See Annex II/F in C/S A.001 for spacecraft status) | nnn | |
| 7 | ORBIT NUMBER | RANGE = 00001 -> 99999 | nnnnn | |
| 8 | NUMBER OF ALERTS WITH DOPPLER POSITIONS | 01 -> 99 | nn | (Note 3) |
| 9 | NOT USED | (previously Number of Images Reported) | | |
| 10 | NUMBER OF ALERTS WITHOUT DOPPLER POSITIONS (406 ONLY) | 01 -> 99 | nn | (Note 3) |

Note 1: The following legend applies:
all upper case = the actual transmitted character
a = all transmittable characters
h = Hexadecimal characters (0-9, A-F)
s = sign symbol, plus (+) or minus (-)
n = numerals 0 to 9
b = space.

Note 2: If the outgoing message is not a retransmission, "00000" will be inserted as the original message number.

Note 3: Ensure the 25,000 character transmission limit is not exceeded.

Table B.1 (Cont.)**Message Fields Description**

| MF# | NAME | CONTENT | CHARACTER TEXT |
|-----|----------------------|--|----------------------------|
| 11 | SOURCE ID | (SEE TABLES II/A.1, II/B.1 in C/S A.001) | nnnn |
| 12 | LOCAL / GLOBAL FLAG | LOCAL = + GLOBAL or LOCAL&GLOBAL = - | sn |
| | FREQUENCY BAND | BAND 1 - 121.5 2 - 243 3 - 121.5/243 4 - 406 SARP * 5 - 406 COMBINED LEO/GEO WITH SARP 6 - 406 COMBINED LEO/GEO WITH SARR 7 - 406 COMBINED LEO/GEO WITH SARP AND SARR 8 - 406 SARR 9 - 406 COMBINED SARP AND SARR | |
| 13 | BIAS (Hz) | - 30000.0 -> + 75000.0 DEFAULT VALUE = +99999.9 | snnnnn.n |
| | BSDEV (Hz) | 000.0 -> 900.0 DEFAULT VALUE = 999.9 | nnn.n |
| | DRIFT (Hz/min) | -99.00 -> +99.00 DEFAULT VALUE = +99.99 | snn.nn |
| 14 | TCA | YEAR = 00 -> 99 DAY(JULIAN) = 001 -> 366 UTC - HRS = 00 -> 23 MINS = 00 -> 59 SECS = 00.00 -> 59.99 | nn nnn nnnn nn.nn |
| 15 | WINDOW FACTOR (WF) | 0 = IN WINDOW 1->9 = OUTSIDE WINDOW WF = Integer of the Quotient $\left \frac{TCA - \frac{1}{2}(Tf + Tl)}{\frac{1}{2}(Tf - Tl)} \right $ where: TCA = Time of closest approach Tf = Time of first data point Tl = Time of last data point All times are in an absolute time reference (e.g. seconds since 1980) | n |
| 16 | NUMBER OF ITERATIONS | 1 -> 9 DEFAULT VALUE = 0 | n |
| 17 | CTA (DEGREE) | 00.000 -> 33.000 | nn.nnn |
| 18 | SECONDARY SOURCE ID | (SEE TABLE II/B.2 in C/S A.001) DEFAULT VALUE = 0000 | nnnn |

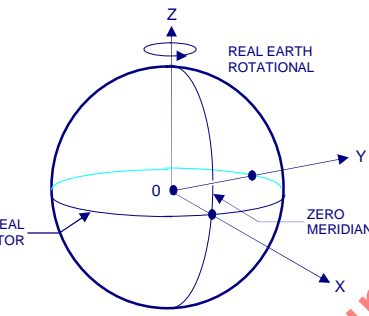
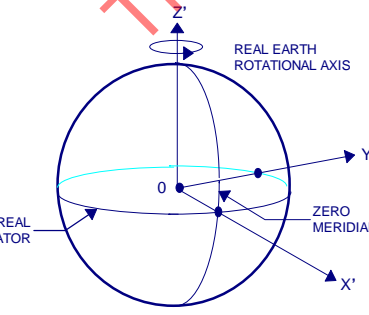
Note: * Value to be used for SIT 121 messages (406 MHz interferer notification).

Table B.1 (Cont.)**Message Fields Description**

| MF# | NAME | CONTENT | CHARACTER TEXT |
|-----|---|---|-----------------------|
| 19 | NUMBER OF SIDEBANDS | 00 -> 99 DEFAULT VALUE = 00 | nn |
| 20 | SWEEP PERIOD (mSec) SPSDEV (mSec) | SPERIOD = 0001 -> 9999 DEFAULT VALUE = 0000 SPSDEV = 01 -> 90 DEFAULT VALUE = 99 | nnnn nn |
| 21 | NUMBER OF POINTS (406) | 01 -> 99 | nn |
| 22 | BEACON ID | 15 HEX CHARACTERS (BITS 26-85) (SEE C/S T.001) | hhhhhhhhhhhhhhhh |
| 23 | 406 MESSAGE | 30 HEX CHARACTERS (BITS 25-144) (SEE C/S T.001) | h.....h |
| 24 | DDR/SERVICE AREA AR FLAG | MCC COUNTRY CODE = 100->999 AMBIGUITY RESOLUTION: “+” = RESOLVED OR NON-IMAGE POSITION IN SOLUTION “-” = IMAGE POSITION “-” IN ‘A’ AND ‘B’ = RESOLVED POSITION IN ENCODED DATA “+” IN ‘A’ AND ‘B’ = DEFAULT = NO RESOLVED POSITION | snnn |
| 25 | LATITUDE (DEGREE) | LAT: ± 00.000 -> ± 90.000 WHERE: + = NORTH and - = SOUTH | snn.nnn |
| 26 | LONGITUDE (DEGREE) | LONG: ± 000.000 -> ± 180.000 WHERE: + = EAST and - = WEST | snnn.nnn |
| 27 | ERROR ELLIPSE: ANGLE (DEGREES) MAJ AXIS (km) MIN AXIS (km) | 000 -> 359 000.1 -> 999.9 000.1 -> 999.9 | nnn nnn.n nnn.n |
| 28 | PROBABILITY (%) | 01 -> 99 | nn |
| 29 | NEXT TIME OF VISIBILITY | (SAME AS MF#3) DEFAULT VALUE = ALL 0s | (SAME AS MF#3) |
| 30 | CONFIDENCE FACTOR | 1 -> 4 | n |
| 31 | DATA RESIDUAL: SDEV (Hz) TREND (Hz) | SDEV: 000.0 -> 250.0 DEFAULT VALUE = 255.0 TREND: 000.0 -> 250.0 DEFAULT VALUE = 255.0 | nnn.n nnn.n |

Table B.1 (Cont.)

Message Fields Description

| MF# | NAME | CONTENT | CHARACTER TEXT |
|-----|---------------------------|--|--|
| 32 | NUMBER OF ORBIT VECTORS | 01 | nn |
| 33 | NUMBER OF PROCEDURE NAMES | 01 -> 99 | nn (Note 3) |
| 34 | ORBIT TIME | YEAR = 00 - 99 DAY (JULIAN 001 - 366) UTC - HOURS 00 - 23 - MINUTES 00 - 59 - SECONDS 00.000 - 59.999 | nn nnn nnnn nn.nnn |
| 35 | ORBIT POSITION (km) |  <p> $X = \pm 0000.0000 \rightarrow \pm 9999.9999$ $Y = \pm 0000.0000 \rightarrow \pm 9999.9999$ $Z = \pm 0000.0000 \rightarrow \pm 9999.9999$ </p> | snnnn.nnnn snnnn.nnnn snnnn.nnnn |
| 36 | ORBIT VELOCITY (km/sec) |  <p> $X' = \pm 000.00000 \rightarrow \pm 999.99999$ $Y' = \pm 000.00000 \rightarrow \pm 999.99999$ $Z' = \pm 000.00000 \rightarrow \pm 999.99999$ </p> | snnn.nnnnn snnn.nnnnn snnn.nnnnn |

Note 3: Ensure the 25,000 character transmission limit is not exceeded.

Table B.1 (Cont.)**Message Fields Description**

| MF# | NAME | CONTENT | CHARACTER TEXT |
|-----|--------------------------------|---|--|
| 37 | CALIBRATION TIME | (SAME AS MF #34) | (SAME AS MF #34) |
| 38 | USO FREQUENCY (Hz) | 0000000.000 -> 9999999.999 | nnnnnnn.nnn |
| 38a | USO FREQUENCY (Hz) | 00000000.000 -> 99999999.999 | nnnnnnnn.nnn |
| 39 | COMMAND PROCEDURE NAME | DEFINED BY MCC/MCC REQUIREMENT | aaaaaaaaaaaaa p |
| | PRIORITY | R -> ROUTINE E -> EMERGENCY DEFAULT = R | |
| 40 | EXECUTE TIME | (SAME AS MF #14) | (SAME AS MF #14) |
| 41 | NARRATIVE TEXT | 69 CHARACTERS PER LINE, TERMINATED WITH "QQQQ" SUCH THAT MSG <25,000 CHARACTERS | a.....a a.....a QQQQ |
| 42 | ENDSIT | LASSIT | LASSIT |
| 43 | ENDMSG | ENDMSG | ENDMSG |
| 44 | NUMBER OF SPACECRAFT | 01 -> 99 | nn (Note 3) |
| 45 | MESSAGE TYPE | HEADING | 1.bbDISTRESSbbCOSPAS-SARSATbaaaaa...a or 1.bbSHIPbbSECURITY bbCOSPAS-SARSATbaaaaa...a |
| 46 | CURRENT MSG NO MESSAGE NUMBER | HEADING CURRENT MESSAGE NUMBER | 2.bbMSGbNOb nnnnnbb |
| 47 | MCC REFERENCE MESSAGE NUMBER | HEADING REFERENCE MESSAGE NUMBER | aaaaabREFbNOb nnnnn |
| 48 | DETECTION TIME & SPACECRAFT ID | HEADING | 3.bbDETECTED AT |
| | DETECTION TIME | DAY = 01 -> 31 MONTHS = (SEE APPENDIX B.1) YEAR = 00 -> 99 UTC-HRS = 00 -> 23 MINS = 00 -> 59 | nnbbaabnnbnnnnbUTCbBYb |
| | SPACECRAFT ID | COSPAS xx, SARSAT xx GOES xx, INSAT-2 x, INSAT-3 x, MSG x or LUCH-M x | aaaaaaabnn |

Note 3: Ensure the 25,000 character transmission limit is not exceeded.

Table B.1 (Cont.)**Message Fields Description**

| MF# | NAME | CONTENT | CHARACTER TEXT |
|-----|-----------------------------------|---|---------------------------------------|
| 49 | DETECTION FREQUENCY | HEADING | 4.bbDETECTIONbFREQUENCYbb |
| | DETECTION FREQUENCY | THE ACTUAL DETECTION FREQUENCY: 121.5000 MHz 243.0000 MHz 406.0250 MHz | nnn.nnnnbMHZ |
| 50 | COUNTRY OF BEACON REGISTRATION | HEADING | 5.bbCOUNTRYbOFbBEACON REGISTRATION |
| | COUNTRY NAME | COUNTRY CODE/ TEN CHARACTER ABBREVIATION OF COUNTRY (SEE C/S A.001) | nnn/aaaaaaaaa |
| 51 | USER CLASS OF BEACON | HEADING | 6.bbUSERbCLASSbb |
| | USER CLASS | (SEE APPENDIX B.1) | aaaaaaaaaaaaa |
| 52 | IDENTIFICATION | HEADING | /IDENTIFICATIONbb |
| | IDENTIFICATION | (SEE C/S T.001) or UNKNOWN UNIDENTIFIED MODIFIED- BAUDOT CODE CHARACTER = "?" | aaaaaaa |
| 53 | EMERGENCY CODE | HEADING | 7.bbEMERGENCYbCODEbb |
| | EMERGENCY CODE | (SEE C/S T.001) or NIL | aaaaaaaaaaaaa |
| 54 | POSITIONS* | HEADING | 8.bbPOSITIONS |
| 54a | RESOLVED POSITION | HEADING | bbbbbbbbbRESOLVEDbbb-b |
| | RESOLVED LATITUDE | LAT | nnbnn.na |
| | DEGREES | 00 -> 90 | |
| | MINUTES | 00.0 -> 59.9 | |
| | NORTH OR SOUTH | N or S | |
| | RESOLVED LONGITUDE | LONG | bbnnnbnn.na |
| | DEGREES | 000 -> 180 | |
| | MINUTES | 00.0 -> 59.9 | |
| | EAST OR WEST | E or W | |

Note: * If the latitude is exactly 90 degrees (North or South) or if the longitude is exactly 180 degrees (East or West), then the corresponding value for minutes must be exactly 00.0

Table B.1 (Cont.)**Message Fields Description**

| MF# | NAME | CONTENT | CHARACTER TEXT |
|-----|--|--|--|
| 54b | A POSITION & PROBABILITY | HEADING | bbbbbbbbbDOPPLERbAb-b |
| | A LATITUDE DEGREES MINUTES NORTH OR SOUTH | LAT 00 -> 90 00.0 -> 59.9 N or S | nnbnn.na |
| | A LONGITUDE DEGREES MINUTES EAST OR WEST | LONG 000 -> 180 00.0 -> 59.9 E or W | bbnnnbnn.nabbbb |
| | A PROBABILITY(%) | PROB 01 -> 99 | PROBbnn |
| 54c | B POSITION & PROBABILITY | HEADING | bbbbbbbbbDOPPLERbBb-b |
| | B LATITUDE | (SAME AS MF#54b) | nnbnn.na |
| | B LONGITUDE | (SAME AS MF#54b) | bbnnnbnn.nabbbb |
| | B PROBABILITY(%) | (SAME AS MF#54b) | PROBbnn |
| 54d | ENCODED POSITION & TIME OF UPDATE | HEADING | bbbbbbbbbENCODEDbbb-b |
| | ENCODED LATITUDE | (SAME AS MF#54b) | nnbnn.na |
| | ENCODED LONGITUDE | (SAME AS MF#54b) | bbnnnbnn.nabbbb |
| | TIME OF UPDATE | TIME OF UPDATE | UNKNOWN |
| 55 | SOURCE OF ENCODED POSITION DATA | HEADING (SEE APPENDIX B.1) | 9.bbENCODEDbPOSITIONb PROVIDEDbBYb aaaaaaaaaaaaaaaaaaaaaaaaaaaaa |
| 56 | NEXT PASS TIMES | HEADING | 10.bbNEXTbPASSbTIMES |
| 56a | NEXT TIME OF VISIBILITY OF RESOLVED POSITION | HEADING | bbbbbbbbbRESOLVEDbbb-b |
| | | DAY/MONTH/YEAR | DDbMMMbYYbb |
| | | HOURS/MINUTES (UTC) 0000-> 2359 UTC or UNKNOWN | HHMMbUTC |

Table B.1 (Cont.)**Message Fields Description**

| MF# | NAME | CONTENT | CHARACTER TEXT |
|-----|---|---|--|
| 56b | NEXT TIME OF VISIBILITY A POSITION | HEADING DAY/MONTH/YEAR HOURS/MINUTES (UTC) 0000-> 2359 UTC or UNKNOWN | bbbbbbbbbDOPPLERbAb-b DDbMMMbYYbb HHMMbUTC |
| 56c | NEXT TIME OF VISIBILITY B POSITION | HEADING (SAME AS MF#56a) | bbbbbbbbbDOPPLERbBb-b |
| 56d | NEXT TIME OF VISIBILITY OF ENCODED POSITION | HEADING (SAME AS MF#56a) | bbbbbbbbbENCODEDbb-b |
| 57 | BEACON HEX ID & HOMING SIGNAL HEX ID HOMING SIGNAL | HEADING (SEE APPENDIX B.1) (SEE APPENDIX B.1) | 11.bbHEXbIDbb hhhhhhhhhhhhhh bbbbHOMINGbSIGNALbb aaaaaaaa |
| 58 | ACTIVATION TYPE | HEADING UNKNOWN or MANUAL | 12.bbACTIVATIONbTYPE aaaaaaaa |
| 59 | BEACON NUMBER | HEADING NUMBER OR NIL | 13.bbBEACONbNUMBERbON bAIRCRAFTbORbVESSELbNO.b aaa |
| 60 | OTHER ENCODED INFORMATION | HEADING (SEE APPENDIX B.1) | 14.bbOTHERbENCODEDb INFORMATION aaa.....a |
| 61 | OPERATIONAL INFORMATION | HEADING (SEE APPENDIX B.1) | 15.bbOPERATIONALb INFORMATION aaa.....a |
| 62 | REMARKS | HEADING (SEE APPENDIX B.1) | 16.bbREMARKS aaa.....a |
| 63 | END OF MESSAGE | HEADING | ENDbOFbMESSAGE |

Table B.1 (Cont.)**Message Fields Description**

| MF# | NAME | CONTENT | CHARACTER TEXT |
|----------------|---|---|------------------|
| 64 | 406 MHz SARR FREQ. CALIBR. OFFSET (Hz) | -9999.999 -> +9999.999 | snnnn.nnn |
| 65 | 406 MHz SARR FREQ. CALIB. DRIFT (Hz/day) | -99.999 -> +99.999 DEFAULT VALUE = +00.000 | snn.nnn |
| 66 | TIME OF 406 MHz SARR FREQ. CALIB. DETERMINATION | (SAME AS MF # 3) | (SAME AS MF # 3) |
| 67 to 76 | Reserved for MEOSAR | | |

APPENDIX B.1 TO ANNEX B**MESSAGE FIELDS DEFINITION****MF Message Fields Definition**

#

1. Message Number

If the outgoing message is a retransmission of a previous message, the current message number will be followed by the message number of the original message.

For message accountability it is recommended that the outgoing message number be unique and sequential for each destination. See Appendix B.3 for a suggested algorithm for message sequence tracking.

2. Reporting MCC

The identification code corresponding to the MCC sending the current message.

3. Message Transmit Time

The time at which the current message is placed on the communication channel by the reporting agency.

4. SIT

The Subject Indicator Type corresponding to the format required for the message being sent.

5. Destination MCC

The identification code corresponding to the destination of the SIT message. For the SIT 915 and 925 messages this is the final destination of the SIT message, for all other SIT messages this is the MCC receiving the current message.

6. Spacecraft ID

The satellite identification to which the message data applies.

7. Orbit Number

The orbit number of the spacecraft designated in MF#6.

8. Number of Alerts with Doppler Positions

The number of alerts of this SIT format with Doppler positions, that are included between the SIT header and the SIT trailer as specified in Table C.1. 406 MHz alerts may or may not contain encoded position information.

9. Not Used (previously: Number of Images Reported)

10. Number of Alerts without Doppler Position (406 only)

The number of alerts of this SIT format without Doppler positions, that are included between the SIT header and the SIT trailer as specified in Table C.1. This field is to be used only with 406 MHz alerts, which may or may not contain encoded position information.

11. Source ID

The identification code corresponding to the MCC / LUT that originally provided the solution data being reported on in the SIT message.

12. Local/Global Flag

Indicates if the reported 406 MHz location has been obtained from the local mode or from the global mode of operation. If the 406 MHz location is a mixture of global and real time data and the time of the first data point is before the AOS of the LUT the flag is set as GLOBAL.

Frequency Band

The frequency band at which the solution has been detected. 406 SARP are solutions which only use data bursts processed through the SARP channel on-board the satellite. 406 SARR are solutions which only use data bursts relayed through the repeater on-board the satellite. 406 COMBINED SARP and SARR are solutions where the data bursts or the solutions are combined at the LUT.

406 MHz combined LEO/GEO solutions contain Doppler locations that have been produced by LEO/GEO processing.

The value for this field shall be computed from the 'A' solution.

13. Bias

The frequency offset of the detected signal around the nominal frequency.

| | | |
|-------|---|----------------|
| 406 | = | 406.025000 MHz |
| 121.5 | = | 121.500000 MHz |
| 243 | = | 243.000000 MHz |

In the multiple frequency condition as indicated in MF # 12, the lowest frequency is used.

For GEOSAR alerts bias is given for the last detected burst.

BSDEV

The standard deviation of the bias measurement.

For GEOSAR alerts BSDEV is the absolute value of the difference between the first and last detected bursts.

A standard deviation of the bias measurement greater than 999 will be limited to 900.0.

Drift

The rate of frequency change of the beacon carrier frequency with time.

A drift rate greater than ± 99.00 will be limited to ± 99.00 .

For GEOSAR alerts drift is the average frequency drift between the first and last detected burst ('+' if frequency increases versus time).

The value for this field shall be computed from the 'A' solution.

14. TCA

For LEOSAR Doppler location data, the Time of Closest Approach (TCA) indicates the time at which the satellite was closest to the beacon. For LEOSAR alerts, the value for this field shall be computed from the 'A' solution. For LEOSAR detect only solutions, the TCA is the time of the last data point.

For the first GEOSAR alert message, the TCA field contains the time of the first beacon burst of the first integration process. For the second and subsequent beacon message updates, the TCA field contains the time of the first burst of the current integration process.

15. Window Factor

The Window Factor is an indicator of the position of the data points relative to the TCA.

If the TCA is included in the set of data points, then the Window Factor is set to "0". If the TCA is not included in the set of data points, then the Window Factor has a range between "1" and "9". All values greater than "9" are set to "9".

The value for this field shall be computed from the 'A' solution.

16. Number of Iterations

The number of times the LUT computer had to process the detected incident data to arrive at the solution being reported on.

If the number of iterations is greater than 9, it shall be reported as a value of 9.

The value for this field shall be computed from the 'A' solution.

17. CTA

The Cross Track Angle (CTA) is the angle at the centre of the earth, between the satellite and the beacon at TCA.

The value for this field shall be computed from the 'A' solution.

18. Secondary Source ID (previously: Power Indicator)

For 406 MHz combined LEO/GEO data, the identification code corresponding to the GEOLUT that originally provided the GEOSAR data for combined processing.

The default value for this field is "0000".

19. Number of Sidebands

The number of identified sideband components around the solution curve, that have been removed (filtered out) by the LUT/MCC.

20. Sweep Period

The time taken by the amplitude modulation (AM) of the 121.5/243 MHz beacon signal to change from the higher to the lower AM frequency limit.

SPSDEV

The Sweep Period Standard Deviation is the measured standard deviation of the sweep period for the solution being reported.

The value for this field shall be computed from the 'A' solution.

21. Number of Points (406 MHz)

For data originating from the LEOSAR system: The number of bursts detected by the LEOLUT for each 406 MHz beacon identification, used to develop a solution. For combined SARP and SARR, it is the number of unique time-frequency data points after the two processes have been merged.

For data originating from the GEOSAR system: The number of independent integrations performed to produce a 406 MHz beacon message as described in document C/S T.009. For unconfirmed messages, the number of points shall be set to "1". For confirmed messages the number of independent integrations shall be reported.

For combined LEO/GEO processing, it is the number of data points used from the 406 MHz LEOSAR channel in the combined processing.

The value for this field shall be computed from the 'A' solution.

22. Beacon ID

Bits 26-85 of the 406 MHz binary message, shown in 15 character hexadecimal representation. For location protocol beacons, the bits are defaulted according to document C/S T.001.

23. 406 Message

The 406 MHz binary message of the solution, in its undecoded form, shown in the full 30 hexadecimal character representation. Short format messages are left justified and zero-filled.

24. DDR/Service Area

The MCC country code for the individual MCC service area or the MCC country code of the nodal MCC for the DDR as provided in System document C/S A.001 "Cospas-Sarsat Data Distribution Plan".

Nodal MCCs will fill this field with service area.

Ambiguity Resolution Flag

Indicates which position has been determined to be the resolved (unambiguous) or image position.

For ambiguity resolution messages, the ambiguity resolution flag indicates the resolved position. A “+” indicates the resolved position in this solution. A “-” in both the “A” and “B” solution indicates that the resolved position is the encoded position contained in the 406 MHz beacon message.

For messages prior to ambiguity resolution, a “-” indicates that this position is an image, as determined by the “406 MHz LEOSAR Image Position Determination” algorithm in Appendix B.2 to Annex B. Determining that a position is an image prior to ambiguity resolution is optional.

25. Latitude

The calculated latitude of the solution.

26. Longitude

The calculated longitude of the solution.

27. Error Ellipse

An ellipse centred at latitude (MF#25) and longitude (MF#26) and containing the true location with a 50% probability.

Angle

The orientation to true north of the major axis of the error ellipse, in a clockwise direction.

Major Axis

The half length, in kilometres, of the major axis of the ellipse.

Any half length axis value greater than 999.9 kilometres will be limited to 999.9.

Minor Axis

The half length, in kilometres, of the minor axis of the ellipse.

Any half length axis value greater than 999.9 kilometres will be limited to 999.9.

28. Probability

The probability that the location reported in the SIT message is the actual solution and not the image solution.

29. Next Time of Visibility

The predicted time (predicted Loss of Signal - LOS) at which the next beacon event (in local mode) for the position being reported will occur. This time is provided by the originating MCC or a nodal MCC (only if an earlier time is available at the node). The default value of zeros shall be used when the next time of visibility is not calculated.

30. Confidence Factor

An indication of the accuracy of the calculated solution based on a correlation between a variety of parameters.

| Confidence Factor No. | Meaning |
|----------------------------------|------------------------------|
| 4 | Within 5.0 nautical miles |
| 3 | Within 20.0 nautical miles |
| 2 | Within 50.0 nautical miles |
| 1 | Less accurate than the above |

31. Data Residual**SDEV**

The standard deviation of the actual data points to the solution Doppler curve.

A small number is desirable.

TREND

The standard deviation on the time shifted solution Doppler curve.

It is an indication of the curve dispersion and a number higher than SDEV is desirable.

32. Number of Orbit Vectors

The number of orbit vectors (MF#s 34, 35 and 36) that are being transmitted in the SIT message.

33. Number of Procedure Names

The number of SARR or SARP commands that are being transmitted in the SIT message.

34. Orbit Time

The time at which the position (MF#35) and the velocity (MF#36) vectors of the satellite, are valid.

35. Orbit Position

The position of the satellite in relation to the centre of the earth in X, Y and Z co-ordinate, in effect at the time specified by MF#34.

36. Orbit Velocity

Velocity of the spacecraft relative to the earth-fixed co-ordinate system shown for MF#35, expressed in that same co-ordinate system.

37. Calibration Time

The time at which the Ultra-Stable Oscillator (USO) time reference on Sarsat was rolled over as per MF#38.

38. USO Frequency

The oscillator frequency that was measured at the time specified in MF#37.

39. Command Procedure Name

The name of the commands to be executed at the time specified by MF#40 for both SARR and SARP command messages.

Priority

The indication of urgency for the execution of the spacecraft command procedure.

40. Execute Time

The time at which the command procedure name specified in MF#39 is to be executed.

41. Narrative Text

The character text to be transmitted as part of SIT message. Always terminated by 2 Carriage Returns, 1 Line Feed, 4 Os, 2 Carriage Returns and 1 Line Feed. In SIT 605, 915 and 925 messages, the originating MCC shall identify itself and the final destination MCC(s) in plain text; in SIT 605 messages, the final destination is "ALL MCCs".

42. ENDSIT

This field always contains the code LASSIT at the end of every SIT message.

43. ENDMSG

This field is inserted at the end of every current message to be transmitted. It will always follow the ENDSIT field (MF#42) LASSIT.

44. Number of Spacecraft

The number of spacecraft for which orbit vectors are being transmitted in the SIT message.

45. Message Type

For a ship security alert, the message type begins with "SHIP SECURITY COSPAS-SARSAT ...", otherwise, the message type begins with "DISTRESS COSPAS-SARSAT ...".

Indicates type of alert message, for example:

- DISTRESS COSPAS-SARSAT POSITION RESOLVED ALERT
- DISTRESS COSPAS-SARSAT POSITION RESOLVED UPDATE ALERT
- DISTRESS COSPAS-SARSAT POSITION CONFLICT ALERT
- DISTRESS COSPAS-SARSAT INITIAL ALERT
- DISTRESS COSPAS-SARSAT NOTIFICATION OF COUNTRY OF BEACON REGISTRATION ALERT
- SHIP SECURITY COSPAS-SARSAT POSITION RESOLVED ALERT
- SHIP SECURITY COSPAS-SARSAT POSITION RESOLVED UPDATE ALERT
- SHIP SECURITY COSPAS-SARSAT POSITION CONFLICT ALERT
- SHIP SECURITY COSPAS-SARSAT INITIAL ALERT

46. Current Message Number

The message number assigned to this message by the transmitting MCC.

47. MCC Reference

This reference is a unique designator supplied by the MCC to identify all messages sent for that beacon.

48. Detection Time & Spacecraft ID

The detection time is TCA (as defined at MF#14) and abbreviation for months is as per table below. The time is followed on the same line by the identity of the satellite which provided the alert data.

| Abbreviation | Month | Abbreviation | Month |
|--------------|----------|--------------|-----------|
| JAN | January | JUL | July |
| FEB | February | AUG | August |
| MAR | March | SEP | September |
| APR | April | OCT | October |
| MAY | May | NOV | November |
| JUN | June | DEC | December |

49. Detection Frequency

If the beacon is transmitting on more than one frequency, i.e. 121.5 and 243 or 406 MHz, then both frequencies may be entered successively on the same line.

Actual values will be used when available. If actual values are not available, then the values 121.5 MHz, 243 MHz or 406 MHz will be used, as appropriate.

50. Country of Beacon Registration

Three numeric characters of the Country Code followed by the ten character abbreviation of the country where the detected beacon is registered as defined in System document C/S A.001 "Cospas-Sarsat Data Distribution Plan".

Enter "NIL" if the 406 MHz Beacon Message is invalid per C/S A.001, section III/B.1.1.3.

51. User Class of Beacon

User class information as per table below and produced from beacon information by the MCC.

Enter "NIL" if the 406 MHz Beacon Message is invalid per C/S A.001, section III/B.1.1.3.

| 406 MHz Beacon Protocol | User Class in RCC Message |
|---|---|
| Standard Location Protocol Aviation | STANDARD LOCATION - followed by ELT - AIRCRAFT SERIAL NO: CSTA CERTIFICATE NO ELT - AIRCRAFT 24-BIT ADDRESS 6 HEX CHARACTERS: ELT - AIRCRAFT OPERATOR DESIGNATOR OPERATOR: SERIAL NO: |
| Maritime | EPIRB - SERIAL NO: CSTA CERTIFICATE NO EPIRB - MMSI LAST 6 DIGITS: |
| Personal Locator Beacon | PLB - SERIAL NO: CSTA CERTIFICATE NO: |
| Ship Security | SHIP SECURITY - MMSI LAST 6 DIGITS: |
| National Location Protocol Aviation | NATIONAL LOCATION - followed by ELT - SERIAL NO: |
| Maritime | EPIRB - SERIAL NO: |
| Personal Locator Beacon | PLB - SERIAL NO: |
| User/User Location protocol Maritime | USER/USER LOCATION - followed by EPIRB USER MMSI - LAST 6 DIGITS: (OR) RADIOCALLSIGN: |
| Radio Call Sign | EPIRB USER RADIO CALLSIGN: |
| Aviation | ELT USER AIRCRAFT REGISTRATION |
| Serial: | SERIAL USER/USER LOCATION - followed by |
| (a) Aviation | ELT - AIRCRAFT SERIAL NO: (CSTA CERTIFICATE NO:) |
| (b) Maritime (Float-Free) | EPIRB (FLOAT FREE) SERIAL NO: (CSTA CERTIFICATE NO:) |
| (c) Maritime (Non Float-Free) | EPIRB (NON FLOAT FREE) SERIAL NO: (CSTA CERTIFICATE NO:) |
| (d) Personal Locator Beacon | PLB SERIAL NO: (CSTA CERTIFICATE NO:) |
| (e) Aircraft 24-Bit Address | ELT - AIRCRAFT 24-BIT ADDRESS 6 HEX CHARACTERS: (CSTA CERTIFICATE NO:) |
| (f) Aircraft Operator Designator | ELT - AIRCRAFT OPERATOR DESIGNATOR OPERATOR: SERIAL NO: (CSTA CERTIFICATE NO:) |
| (g) Not assigned | UNKNOWN |
| Spare | UNKNOWN |
| Test | TEST |

52. Identification

The identification information as described in the Cospas-Sarsat beacon specifications.

Enter "NIL" if the 406 MHz Beacon Message is invalid per C/S A.001, section III/B.1.1.3.

53. Emergency Code

The emergency code as indicated by the beacon coding as described in the Cospas-Sarsat beacon specification.

Enter "NIL" if the 406 MHz Beacon Message is invalid per C/S A.001 section III/B.1.1.3.

54. Position Information

The position information associated with the resolved position, A&B Doppler positions, and the encoded position as appropriate.

54a. Resolved Position

Latitude and longitude of resolved position.

54b. A Position & Probability

The latitude and longitude of the A Doppler Position and the percentage probability that the A Position is the actual position of the incident.

54c. B Position & Probability

Same as MF#54b above but for B Position.

54d. Encoded Position and Time of Update

Latitude and longitude of encoded position. Time of update is UNKNOWN.

Enter "NIL" if the 406 MHz Beacon Message is invalid per C/S A.001, section III/B.1.1.3.

55. Source of Encoded Position Data

This indicates whether the encoded position data was provided to the beacon by an internal or external device. Enter "NIL" if the 406 MHz Beacon Message is invalid per C/S A.001, section III/B.1.1.3.

56. Next Pass Times

The predicted time (predicted Loss of Signal – LOS) at which the next beacon event (in local mode) for the position being reported will occur.

56a. Next Time of Visibility of Resolved Position

Optional information indicating the next time of visibility for the resolved position; "UNKNOWN" if the information is not available.

56b. Next Time of Visibility A Doppler Position

Same as MF#56a above but for A Position.

56c. Next Time of Visibility B Doppler Position

Same as MF#56a above but for B Position.

56d. Next Time of Visibility of Encoded Position

Same as for MF#56a but for the Encoded Position.

57. Beacon HEX ID & Homing Signal

Fifteen character hexadecimal representation of beacon identification code and type of homing signal as per table below. Information is taken from the 406 MHz Message (reference MF#23) by the MCC. If the 406 MHz Beacon Message is invalid per C/S A.001, section III/B.1.1.3, then the fifteen character hexadecimal representation shall be based on bits 26 - 85 of the 406 MHz Beacon Message with no bits defaulted.

Homing Signal Interpretation

| <u>Term</u> | <u>Meaning</u> |
|-------------|---|
| NIL | no homing transmitter |
| 121.5 | 121.5 MHz ELT/EPIRB signal in addition to 406 MHz |
| Maritime | 9 GHz Search and Rescue Radar Transponder (SART) in addition to 406 MHz |
| Other | a nationally assigned signal has been included in the beacon. |

58. Activation Type

Type of beacon activation for USER protocols only (non-location protocols).

| | |
|---------------------|------------------------|
| MANUAL | IF BIT 108 IS SET TO 0 |
| AUTOMATIC OR MANUAL | IF BIT 108 IS SET TO 1 |

For Ship Security (Standard Location Protocol), enter MANUAL.

Enter "NIL" if the 406 MHz Beacon Message is invalid per C/S A.001, section III/B.1.1.3.

59. Beacon Number

Beacon number on the vessel or aircraft. Information is determined by decoding the 406 MHz message.

Enter "NIL" if the 406 MHz Beacon Message is invalid per C/S A.001, section III/B.1.1.3.

60. Other Encoded Information

Other information decoded from the 406 MHz message as determined by the servicing MCC. Could include such information as Cospas-Sarsat certificate number, resolution of the encoded position data, or data according to national assignment.

When encoded position data is present, the degree of resolution may be provided by the following:

For user location protocol beacons when location data is present in PDF-2 enter 'ENCODED POSITION UNCERTAINTY PLUS-MINUS 4 MINUTES OF LATITUDE AND LONGITUDE'.

For standard location protocol beacons when location data is present in PDF-1 and missing in PDF-2 enter 'ENCODED POSITION UNCERTAINTY PLUS-MINUS 30 MINUTES OF LATITUDE AND LONGITUDE'.

For national location protocol beacons when location data is present in PDF-1 and missing in PDF-2 enter 'ENCODED POSITION UNCERTAINTY PLUS-MINUS 4 MINUTES OF LATITUDE AND LONGITUDE'.

Enter 'NIL' if no other encoded information is available or if the 406 MHz Beacon Message is invalid per C/S A.001, section III/B.1.1.3.

For protocol containing the aircraft 24-bit address, the country which assigned the 24-bit address will be indicated. If the country that assigned the 24-bit address is unknown, this value will be set to "UNKNOWN". If the registration marking corresponding to the 24-bit address is known, it will be given. If the registration marking is unknown, the full 24-bit address will be given as a 6 character hexadecimal number.

61. Operational Information

Operational information obtained separately from encoded beacon information such as:

- reliability indicator for encoded or 406 MHz Doppler position data *
- 406 MHz database registry information
- people on board
- 'NIL' if not available.

The statement, "THE [A/B] POSITION IS LIKELY TO BE AN IMAGE POSITION." shall be included, as appropriate, per the "406 MHz LEOSAR Image Position Determination" algorithm in Appendix B.2 to Annex B. Determining that a position is an image prior to ambiguity resolution is optional.

Note 1: * The warning "RELIABILITY OF DOPPLER POSITION DATA - SUSPECT" for 406 MHz solutions shall be included on the SIT 185 message when at least one of the following criteria from the alert data values is satisfied:

- Window factor ≥ 3 , or
- Bias standard deviation > 20 Hz, or
- The absolute value of the cross track angle is < 1 or > 22 , or
- Position calculated from < 4 -point solution.

This warning is only included in messages before ambiguity resolution.

Note 2: * The warning "RELIABILITY OF DOPPLER POSITION DATA - SUSPECT DUE TO SATELLITE MANOEUVRE." shall be included in the SIT 185 message during the 24-hour period after the manoeuvre, when the maximum expected error in Doppler location exceeds 10 kilometres within 24 hours of the manoeuvre. See C/S A.001, section 3.7.5.

If the 406 MHz Beacon Message is invalid per C/S A.001, section III/B.1.1.3 then the warning "DATA DECODED FROM THE BEACON MESSAGE IS NOT RELIABLE" shall be included in SIT 185 message.

62. Remarks

Heading for the variable length section of the message. Additional information may be provided at the discretion of the originating MCC as illustrated in the sample alert messages. 'NIL' if no Remarks are available.

For ship security alerts the following should be included: "THIS IS A SHIP SECURITY ALERT. PROCESS THIS ALERT ACCORDING TO RELEVANT SECURITY REQUIREMENTS."

63. End of Message

To indicate to the message recipient that no more information is to come on this message.

64. 406 MHz SARR Frequency Calibration Offset

Difference (in Hz) between the computed frequency produced by the calibration LEOLUT and the known transmit frequency of a reference beacon.

The 406 MHz SARR frequency calibration offset prepared for distribution to other MCCs shall be based on the average of a minimum of twenty satellite passes, each of which includes at least ten data measurements and each of which is associated with a computed location which is accurate to within three kilometres.

65. 406 MHz SARR Frequency Calibration Drift

Drift (in Hz/day) of the 406 MHz SARR frequency provided by the LEO satellite.

66. Time of 406 MHz SARR Frequency Calibration Determination

Time when a 406 MHz SARR frequency calibration offset for a given LEO satellite was determined through the procedure described for MF # 64.

67 - 76 Reserved for MEOSAR

This document has been superseded
by a later version

APPENDIX B.2 TO ANNEX B

DETERMINING THE 406 MHz LEOSAR IMAGE POSITION

The LEOSAR Doppler processing produces two solutions for each satellite pass; a “real” position corresponding to the actual location of the beacon and an “image” position on the opposite side of the satellite track. Prior to determining the “real” position of a 406 MHz beacon, it is possible to use unlocated alert data to determine if one position is an image, as summarised in Figure B.2.

The 406 MHz LEOSAR image position can be determine using the following inputs:

- a) LEOSAR Doppler alert, including beacon ID, A and B latitude/longitude positions (defined as Input “I₂” in the DDP);
- b) GEOSAR or LEOSAR unlocated alert with beacon ID (defined as Input “I₁” in DDP); and
- c) ephemeris data and orbit propagation software, if the unlocated alert originated from a LEOSAR satellite, or the position of the GEOSAR satellite if the alert originated from a GEOSAR satellite.

Figure B.1 and the text below document the procedures for MCCs to follow to determine if a position is inside the footprint of the LEOSAR or GEOSAR satellite at time of detection, and whether a position is an image.

The process of determining an image position is triggered when a LEOSAR Doppler alert (I₂) is received at the MCC (reference process 1 in Figure B.1) for a beacon which has been previously detected, but no location information is available (I₁). The status of the MCC processing prior to receiving the LEOSAR Doppler alert must be at Sw₁ (i.e., only identification information available, no location information present). If the status of the MCC processing is not at Sw₁, then an image position will not be indicated when the alert message is sent by the MCC.

All unlocated alerts on file with a detect time within 60 minutes of the Doppler TCA are examined (reference 3) to determine if the image position can be determined. For LEOSAR unlocated alerts the time of the detection, along with orbit propagation software, is used to determine the sub-satellite position of the LEOSAR satellite at time of detection (reference 4). For GEOSAR satellites the sub-satellite position is obtained from Table II/F.3 in the DDP (reference 5).

Each of the LEOSAR Doppler positions are analysed to determine if they are within the GEOSAR or LEOSAR unlocated footprint using the algorithm shown in Figure B.2 and using the sub-satellite points as input (reference 6). Each unlocated footprint must be analysed before a position can be determined to be an image.

If one of the LEOSAR Doppler positions is conclusively outside the footprint for at least one unlocated alert, then it is the image position, as long as the other position is inside the footprint of every unlocated alert. If neither position is outside of any footprint or each position is outside of any footprint, then the image position cannot be determined.

When a position has been determined to be an image, this will be indicated on the alert message sent by the MCC, as specified in the description of Message Fields 24 and 61 in Appendix B.1 to Annex B.

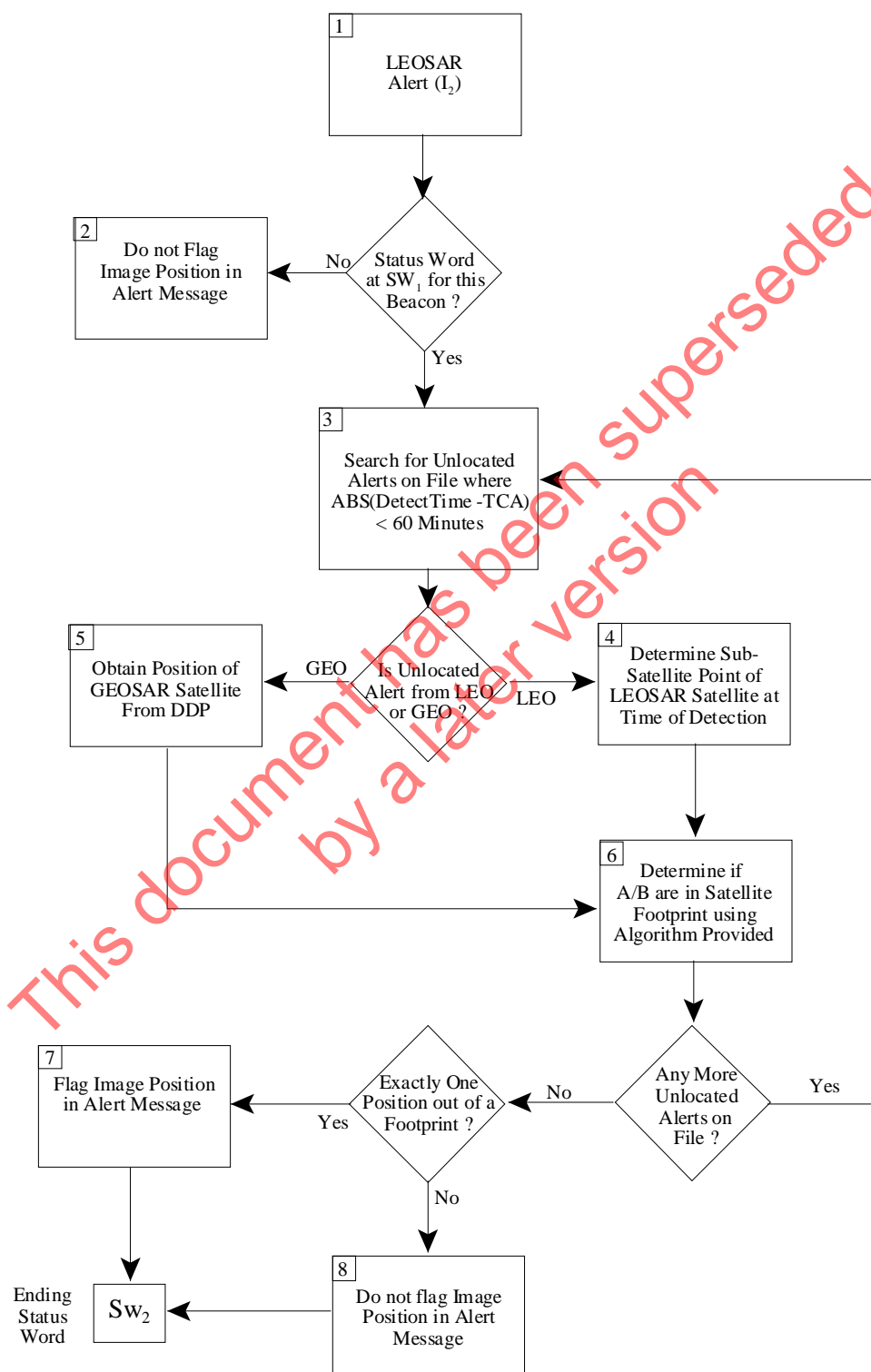


Figure B.1: Using Unlocated Alerts to Determine and Flag the Image Position

| | |
|------------|---|
| Input: | lat LEOSAR computed position latitude in degrees lon LEOSAR computed position longitude in degrees llat GEOSAR or LEOSAR sub-satellite point at time of detection, latitude in degrees llon GEOSAR or LEOSAR sub-satellite point at time of detection, longitude in degrees Emin Minimum elevation angle required (set to -5 degrees) |
| Constants: | Rg altitude of GEOSAR or LEOSAR satellite (note difference in Sarsat and Cospas) Re Equatorial radius of earth = 6378 km ro $Re / (Re + Rg)$ PI 3.1415927 |
| Compute: | rlat = $PI * lat / 180$ rlon = $PI * lon / 180$ rllat = $PI * llat / 180$ rllon = $PI * llon / 180$ c = $\sin(rlat) * \sin(rllat) + \cos(rlat) * \cos(rllat) * \cos(rllon - rlon)$ e = $(c - ro) / \sqrt{1 - c^2}$ E = $180 * \arctan(e) / PI$ |
| Output: | If $E \geq Emin$ then LEOSAR computed position is within satellite footprint, else If $E < Emin$ then LEOSAR computed position is outside satellite footprint |

Figure B.2: Algorithm to Determine if Computed Position is Inside Satellite Footprint

APPENDIX B.3 TO ANNEX B**SUGGESTED ALGORITHM FOR MESSAGE SEQUENCE TRACKING**

The flowcharts in this Appendix define a procedure for the identification of missed messages through message sequence tracking.

The procedure relies on the following data items or structures:

| Data Item | Purpose |
|------------------|---|
| CurMsgNo | The current message number contained in MF#1 of the arriving message |
| PrvMsgNo | The previous message number contained in MF#1 of the arriving message |
| NextExpected | The next message number expected from a given source. This item could be represented as an array indexed by source: NextExpected [MF#2] i.e. each MCC must maintain a table of NextExpected message numbers – one such number for each reporting MCC. When a message is received, the reporting MCC in MF#2 is used to lookup the appropriate NextExpected message number from the table. |
| MissedMsgList | A list of messages that have been identified (by the sequence checking procedure) as overdue. MCCs may choose to implement this as a single list of MF#2:MF#1 pairs or maintain a separate list for each source. |
| TimeMissed | The time at which a message was declared “missing” by the message sequence tracking facility. The message would be added to the MissedMsgList at that time. |
| MAX_MISSING | A configuration constant that limits the number of missed messages that can be generated by a single sequence check. This minimises the impact of an MCC unilaterally resetting its message sequence generator to an arbitrary value. Set to [15]. |
| MAX_MSGNO | A configuration constant that defines the largest message number before message number wrap around is to occur. Set to 99999. |
| MAX_WAIT_TIME | A configuration constant that defines the length of time the MCC will wait for an out of sequence message to arrive before a lost message is declared (and recovery action initiated). Set to [20 minutes]. |

The procedure is executed in two threads (parallel streams of execution):

1. message-checking thread, where each arriving message is subjected to a message sequence check; and
2. monitor thread which constantly checks the missed message list for lost messages.

The two threads are represented in separate flowcharts.

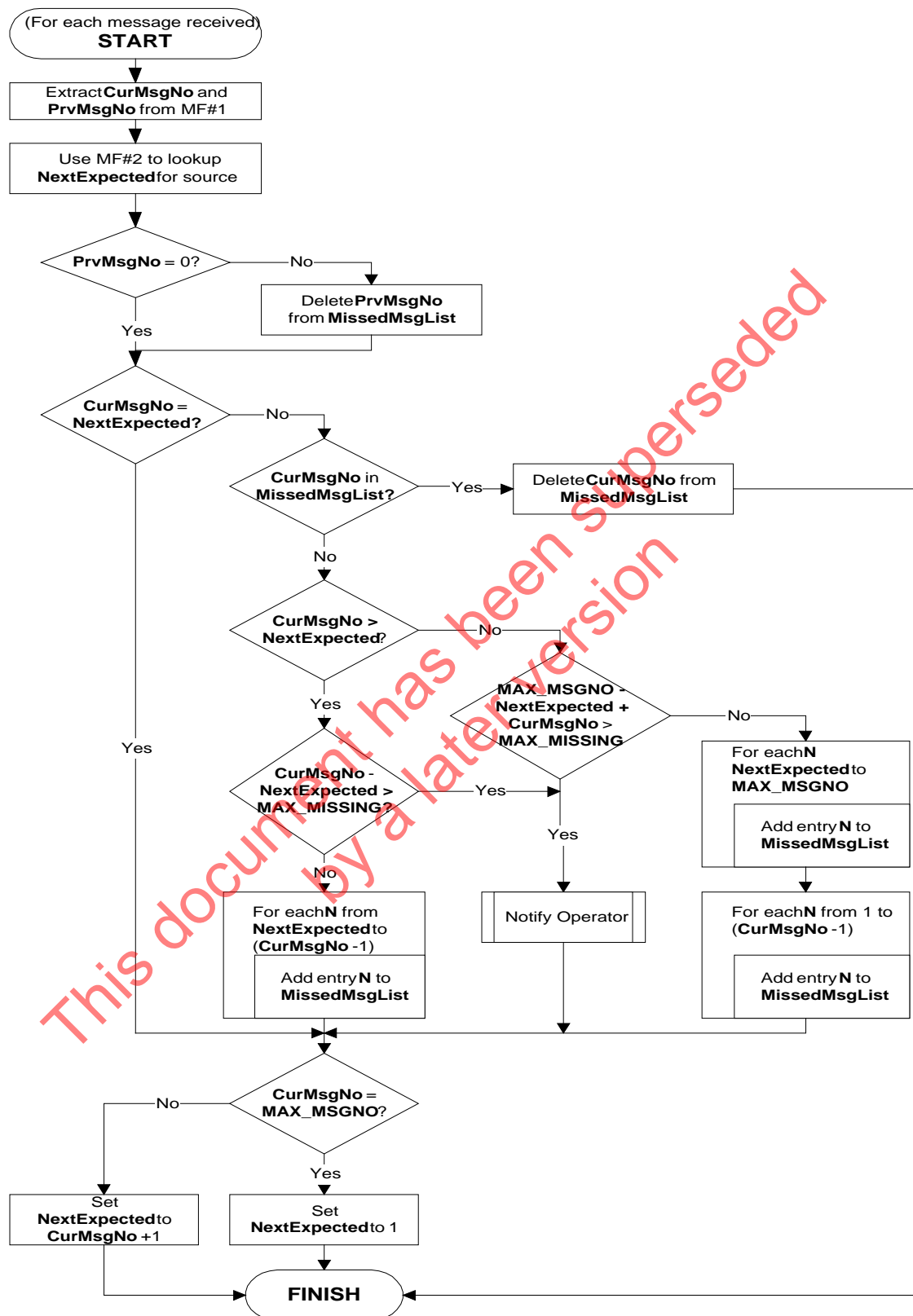


Figure B.3: Message Sequence Checking Flowchart

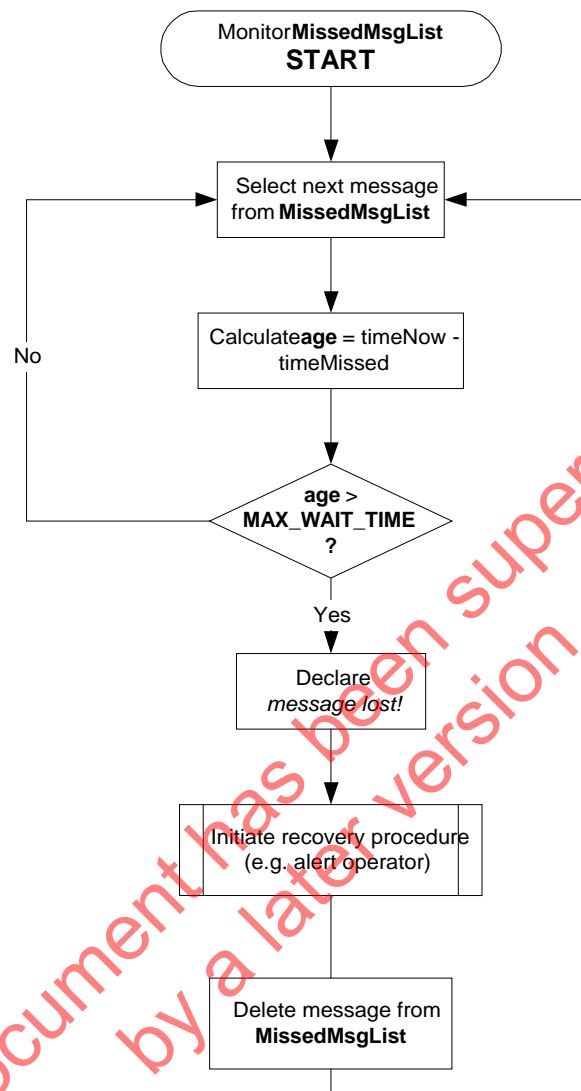


Figure B.4: Missed Message List Monitoring Flowchart

- END OF ANNEX B -

page left blank

This document has been superseded
by a later version

ANNEX C

MESSAGE CONTENT BY SIT

1. MESSAGE TEXT FORMATS

Cospas-Sarsat messages are uniquely identified by specific Subject Indicator Types (SITs). The SIT specifies the format and category of content within the message. MCCs process messages automatically. Therefore it is mandatory that the structure of the message formats be adhered to, so that each MCC can route and / or take action as required by the message. Tables C.1, C.2 and C.3 detail the format of the text for all messages exchanged between the MCCs in terms of Message Fields (MFs) used.

Once the SIT is known for the desired message, the corresponding column identifies which Message Field number (MF#) is necessary to produce the message. Annex B is then used to find the format and the produced message will be similar to those given in the Appendix to this Annex.

2. SAMPLE MESSAGE TEXT

For SIT messages depicted in Tables C.1, C.2 and C.3, sample messages are given in Appendix 1 to this Annex. A sample for multi-SIT messages is also provided in Appendix 1. The sample messages in Appendix 1 also indicate the message line that contains the individual MF#.

TABLE C.1
MESSAGE CONTENT
FOR
ALERT MESSAGES

| MESSAGE FORMAT | MF # | TITLE | SIT NUMBERS | | | |
|--------------------|---------|--|-------------|----------|----------|-------------------------|
| | | | 115 117 | 121 | 122 | 123 124 |
| MESSAGE HEADER | 1 | MESSAGE NUMBER | A | A | A | A ⁽¹⁾ |
| | 2 | REPORTING MCC | A | A | A | A |
| | 3 | MESSAGE TRANSMIT TIME | <u>A</u> | <u>A</u> | <u>A</u> | <u>A</u> ⁽²⁾ |
| SIT HEADER | 4 | SIT | A | A | A | A |
| | 5 | DESTINATION MCC | A | A | A | A |
| | 6 | SPACECRAFT ID | A | A | A | A |
| | 8 | NUM. OF ALERTS WITH DOPPLER POSITIONS | <u>A</u> | <u>A</u> | . | . |
| | 10 | NUM. OF ALERTS WITHOUT DOPPLER POSITIONS (406 ONLY) | . | . | <u>A</u> | <u>A</u> |
| SOLUTION HEADER | 11 | SOURCE ID | A | A | A | A |
| | 12 | LOCAL/GLOBAL FLAG AND FREQ BAND | A | A | . | . |
| | 13 | BIAS, BSDEV AND DRIFT | X | X | X | X |
| | 14 | TCA | A | A | A | A |
| | 15 | WINDOW FACTOR | <u>A</u> | <u>A</u> | . | . |
| | 16 | NUMBER OF ITERATIONS | X | X | . | . |
| | 17 | CROSS TRACK ANGLE | A | A | . | . |
| | 18 | SECONDARY SOURCE ID | X | X | . | . |
| | 19 | NUMBER OF SIDEBANDS | X | X | . | . |
| | 20 | SWEEP PERIOD AND SPSDEV | <u>X</u> | <u>X</u> | . | . |
| | 21 | NUMBER OF POINTS (406 MHz) | . | . | <u>A</u> | <u>A</u> |
| | 23 | 406 MESSAGE | . | . | <u>A</u> | <u>A</u> |
| A DATA | 24 | DDR/SERVICE AREA AND AR FLAG | A | A | . | . |
| | 25 | LATITUDE | A | A | . | . |
| | 26 | LONGITUDE | A | A | . | . |
| | 27 | ERROR ELLIPSE | A | A | . | . |
| | 28 | PROBABILITY | A | A | . | . |
| | 29 | NEXT TIME OF VISIBILITY | X | X | . | . |
| | 30 | CONFIDENCE FACTOR | A | A | . | . |
| | 31 | DATA RESIDUAL: SDEV AND TREND | <u>X</u> | <u>X</u> | . | . |
| B DATA | | REPEAT MF #s 24 TO 31 AS REQUIRED BUT WITH DATA FOR B LOCATION | <u>A</u> | <u>A</u> | . | . |
| | | REPEAT MF #s 11 TO 31 AS REQUIRED, BY MF # 8 OR 10 AND B DATA AS REQUIRED BY MF #8 | <u>A</u> | <u>A</u> | <u>A</u> | <u>A</u> |
| SIT TRAILER | 42 | ENDSIT | <u>A</u> | <u>A</u> | <u>A</u> | <u>A</u> |
| MSG TRAILER | 43 | ENDMSG | <u>A</u> | <u>A</u> | <u>A</u> | <u>A</u> |

Note 1: "A" - indicates actual values.

"X" - indicates default values are allowed.

Note 2: The underline " _ " is an indication where the New Line (NL) code is to be inserted.

TABLE C.1 (Cont.)
MESSAGE CONTENT
FOR
ALERT MESSAGES

| MESSAGE FORMAT | MF # | TITLE | SIT NUMBERS | | |
|--------------------|---------|---|-------------|-----|------------------|
| | | | 125 | | |
| | | | 126 | 132 | 133 |
| | | | 127 | | |
| MESSAGE HEADER | 1 | MESSAGE NUMBER | A | A | A ⁽¹⁾ |
| | 2 | REPORTING MCC | A | A | A |
| | 3 | MESSAGE TRANSMIT TIME | A | A | A ⁽²⁾ |
| SIT HEADER | 4 | SIT | A | A | A |
| | 5 | DESTINATION MCC | A | A | A |
| | 6 | SPACECRAFT ID | A | A | A |
| | 8 | NUM. OF ALERTS WITH DOPPLER POSITIONS | A | . | A |
| | 10 | NUM. OF ALERTS WITHOUT DOPPLER POSITIONS (406 ONLY) | . | A | . |
| SOLUTION HEADER | 11 | SOURCE ID | A | A | A |
| | 12 | LOCAL/GLOBAL FLAG AND FREQ BAND | A | . | A |
| | 13 | BIAS, BSDEV AND DRIFT | X | X | X |
| | 14 | TCA | A | A | A |
| | 15 | WINDOW FACTOR | A | . | A |
| | 16 | NUMBER OF ITERATIONS | X | . | X |
| | 17 | CROSS TRACK ANGLE | X | . | X |
| | 18 | SECONDARY SOURCE ID | X | . | X |
| | 19 | NUMBER OF SIDEBANDS | . | . | . |
| | 20 | SWEEP PERIOD AND SPSDEV | . | . | . |
| | 21 | NUMBER OF POINTS (406 MHz) | A | A | A |
| | 23 | 406 MESSAGE | A | A | A |
| A DATA | 24 | DDR/SERVICE AREA AND AR FLAG | A | . | A |
| | 25 | LATITUDE | A | . | A |
| | 26 | LONGITUDE | A | . | A |
| | 27 | ERROR ELLIPSE | A | . | A |
| | 28 | PROBABILITY | A | . | A |
| | 29 | NEXT TIME OF VISIBILITY | X | . | X |
| | 30 | CONFIDENCE FACTOR | A | . | A |
| | 31 | DATA RESIDUAL: SDEV AND TREND | X | . | X |
| B DATA | | REPEAT MF #s 24 TO 31 AS REQUIRED BUT WITH DATA FOR B LOCATION | A | . | A |
| | | REPEAT MF #s 11 TO 31 AS REQUIRED, BY MF# 8 OR 10 AND B DATA AS REQUIRED BY MF #8 | A | A | A |
| SIT TRAILER | 42 | ENDSIT | A | A | A |
| MSG TRAILER | 43 | ENDMSG | A | A | A |

Note 1: "A" - indicates actual values.

"X" - indicates default values are allowed.

Note 2: The underline "___" is an indication where the New Line (NL) code is to be inserted.

TABLE C.2
MESSAGE CONTENT
FOR
SYSTEM INFORMATION AND NARRATIVE MESSAGES

| MESSAGE FORMAT | MF # | TITLE | SIT NUMBERS | | | | |
|-------------------|---|-----------------------------------|-------------|------------|------------|------------|------------|
| | | | 415 417 | 416 515 | 425 525 | 435 535 | 445 545 |
| MESSAGE HEADER | 1 | MESSAGE NUMBER | A | A | A | A | A |
| | 2 | REPORTING MCC | A | A | A | A | A |
| | 3 | MESSAGE TRANSMIT TIME | <u>A</u> | <u>A</u> | <u>A</u> | <u>A</u> | <u>A</u> |
| SIT HEADER | 4 | SIT | A | A | A | A | A |
| | 5 | DESTINATION MCC | A | <u>A</u> | <u>A</u> | A | <u>A</u> |
| | 44 | NUMBER OF SPACECRAFT | . | . | . | . | . |
| SIT BODY | 6 | SPACECRAFT ID | A | . | . | A | . |
| | 7 | ORBIT NUMBER | A | . | . | . | . |
| | 22 | BEACON ID | . | . | . | . | . |
| | 32 | NUMBER OF ORBIT VECTORS | . | . | . | . | . |
| | 33 | NUMBER OF PROCEDURE NAMES | . | . | . | <u>A</u> | . |
| | 34 | ORBIT TIME | . | . | . | . | . |
| | 35 | ORBIT POSITION | . | . | . | . | . |
| | 36 | ORBIT VELOCITY | . | . | . | . | . |
| | 37 | CALIBRATION TIME | A | . | . | . | . |
| | 38 | USO FREQUENCY | A | . | . | . | . |
| | 39 | COMMAND PROCEDURE NAME & PRIORITY | . | . | . | A | . |
| | 40 | EXECUTE TIME | . | . | . | <u>A</u> | . |
| | 64 | 406 MHz SARR FREQ. CALIB. OFFSET | . | . | . | . | . |
| | 65 | 406 MHz SARR FREQ. CALIB. DRIFT | . | . | . | . | . |
| | 66 | TIME OF 406 MHz SARR FREQ. CALIB. | . | . | . | . | . |
| | REPEAT MF #s 39 AND 40 FOR EACH PROCEDURE NAME (MF # 33) | | . | . | . | <u>A</u> | . |
| | REPEAT MF #s 6 TO 66 AS REQUIRED BY MF # 44 | | . | . | . | . | . |
| | 41 | NARRATIVE TEXT | . | <u>A</u> | <u>A</u> | <u>A</u> | <u>A</u> |
| SIT TRAILER | 42 | ENDSIT | <u>A</u> | <u>A</u> | <u>A</u> | <u>A</u> | <u>A</u> |
| MSG TRAILER | 43 | ENDMSG | <u>A</u> | <u>A</u> | <u>A</u> | <u>A</u> | <u>A</u> |

Notes:

The narrative text is terminated as specified in MF# 41.

See section 4.1 for size specification.

The underline "___" is an indication where the New Line (NL) code is to be inserted.

TABLE C.2 (Cont.)
MESSAGE CONTENT
FOR
SYSTEM INFORMATION AND NARRATIVE MESSAGES

| MESSAGE FORMAT | MF # | TITLE | SIT NUMBERS | | | | |
|-------------------|---|-----------------------------------|-------------|----------|----------|----------|----------|
| | | | 216 215 | 510 | 605 | 915 | 925 |
| MESSAGE HEADER | 1 | MESSAGE NUMBER | A | A | A | A | A |
| | 2 | REPORTING MCC | A | A | A | A | A |
| | 3 | MESSAGE TRANSMIT TIME | <u>A</u> | <u>A</u> | <u>A</u> | <u>A</u> | <u>A</u> |
| SIT HEADER | 4 | SIT | A | A | A | A | A |
| | 5 | DESTINATION MCC | A | A | <u>A</u> | <u>A</u> | <u>A</u> |
| | 44 | NUMBER OF SPACECRAFT | <u>A</u> | <u>A</u> | . | . | . |
| SIT BODY | 6 | SPACECRAFT ID | A | A | . | . | . |
| | 7 | ORBIT NUMBER | A | . | . | . | . |
| | 22 | BEACON ID | . | . | . | . | <u>A</u> |
| | 32 | NUMBER OF ORBIT VECTORS | <u>A</u> | . | . | . | . |
| | 33 | NUMBER OF PROCEDURE NAMES | . | . | . | . | . |
| | 34 | ORBIT TIME | <u>A</u> | . | . | . | . |
| | 35 | ORBIT POSITION | A | . | . | . | . |
| | 36 | ORBIT VELOCITY | <u>A</u> | . | . | . | . |
| | 37 | CALIBRATION TIME | . | . | . | . | . |
| | 38 | USO FREQUENCY | . | . | . | . | . |
| | 39 | COMMAND PROCEDURE NAME & PRIORITY | . | . | . | . | . |
| | 40 | EXECUTE TIME | . | . | . | . | . |
| | 64 | 406 MHz SARR FREQ. CALIB. OFFSET | . | A | . | . | . |
| | 65 | 406 MHz SARR FREQ. CALIB. DRIFT | . | X | . | . | . |
| | 66 | TIME OF 406 MHz SARR FREQ. CALIB. | . | <u>A</u> | . | . | . |
| | REPEAT MF #s 39 AND 40 FOR EACH PROCEDURE NAME (MF # 33) | | . | . | . | . | . |
| | REPEAT MF #s 6 TO 66 AS REQUIRED BY MF # 44 | | <u>A</u> | <u>A</u> | . | . | . |
| | 41 | NARRATIVE TEXT | . | . | <u>A</u> | <u>A</u> | <u>A</u> |
| SIT TRAILER | 42 | ENDSIT | <u>A</u> | <u>A</u> | <u>A</u> | <u>A</u> | <u>A</u> |
| MSG TRAILER | 43 | ENDMSG | <u>A</u> | <u>A</u> | <u>A</u> | <u>A</u> | <u>A</u> |

Notes:

The narrative text is terminated as specified in MF# 41.

See section 4.1 for size specification.

The underline "___" is an indication where the New Line (NL) code is to be inserted.

TABLE C.3
MESSAGE CONTENT
FOR SIT 185 MESSAGES

| PRINTED LINE # | MF # | TITLE | |
|----------------------|---------|--|----------|
| 1 | 45 | MESSAGE TYPE | <u>X</u> |
| 2 | 46 | CURRENT MESSAGE NUMBER | <u>X</u> |
| | 47 | MCC REFERENCE | <u>X</u> |
| 3 | 48 | DETECTION TIME & SPACECRAFT ID | <u>X</u> |
| 4 | 49 | DETECTION FREQUENCY | <u>X</u> |
| 5 | 50 | COUNTRY OF BEACON REGISTRATION | <u>X</u> |
| 6 | 51 | USER CLASS OF BEACON | <u>X</u> |
| | 52 | IDENTIFICATION | <u>X</u> |
| 7 | 53 | EMERGENCY CODE | <u>X</u> |
| 8 | 54 | POSITIONS | <u>X</u> |
| 9 | 54a | RESOLVED POSITION | <u>X</u> |
| 10 | 54b | A POSITION & PROBABILITY | <u>X</u> |
| 11 | 54c | B POSITION & PROBABILITY | <u>X</u> |
| 12 | 54d | ENCODED POSITION AND TIME OF UPDATE | <u>X</u> |
| 13 | 55 | SOURCE OF ENCODED POSITION DATA | <u>X</u> |
| 14 | 56 | NEXT PASS TIMES | <u>X</u> |
| 15 | 56a | NEXT TIME OF VISIBILITY OF RESOLVED POSITION | <u>X</u> |
| 16 | 56b | NEXT TIME OF VISIBILITY A POSITION | <u>X</u> |
| 17 | 56c | NEXT TIME OF VISIBILITY B POSITION | <u>X</u> |
| 18 | 56d | NEXT TIME OF VISIBILITY OF ENCODED POSITION | <u>X</u> |
| 19 | 57 | BEACON HEX ID & HOMING SIGNAL | <u>X</u> |
| 20 | 58 | ACTIVATION TYPE | <u>X</u> |
| 21 | 59 | BEACON NUMBER | <u>X</u> |
| 22 | 60 | OTHER ENCODED INFORMATION | <u>X</u> |
| 23+a | 61 | OPERATIONAL INFORMATION | <u>X</u> |
| 24+a+b | 62 | REMARKS | <u>X</u> |
| 25+a+b+c | 63 | END OF MESSAGE | <u>X</u> |

where:

a = number of lines required for MF#61

b = number of lines required for MF#62

c = number of lines required for MF#63

The underline "_" is an indication where the New Line (NL) code is to be inserted.

APPENDIX C.1 TO ANNEX C**SAMPLE MESSAGES****1. GENERAL**

This Appendix contains examples of messages formatted for transmission. The examples are shown double spaced for ease of reading. Each example is composed of 3 sections:

- a. FORMAT FRAMES
- b. MF #
- c. CONTENT

1.1 Format Frames

The FORMAT FRAME corresponds to the required format given in Section 4 of the document. The INFO frame contains the text message and can therefore be formatted as required by Cospas-Sarsat. The HEADER and TRAILER frames are specified by the host network.

1.2 MF #

This MF # provides the field number used within a particular message line and correspond to the MF # shown in Tables C.1, C.2 and C.3.

1.3 Content

This Section contains the actual information transmitted. Only the content in the examples is transmitted and not the FORMAT FRAME column and the MF #s column.

1.4 SIT 185

Because of its nature, examples for SIT 185 are presented differently than examples for other SIT messages and shows only the content as it would be printed at the receiving agency.

2. SAMPLES

Sample messages for each SIT format are provided in the following pages.

SAMPLE MESSAGE FOR SIT 115, 117

| FORMAT FRAMES | MF# | CONTENT |
|------------------|-------|--|
| HEADER | | (as per communication network requirements if any) |
| | 1,2,3 | /01612 01600/3660/91 280 1705 |
| | 4-6,8 | /115/3160/002/02 |
| | 11-15 | /3663/+3/-03446.0 006.0 +11.00/91 280 1644 23.50/0 |
| | 16-20 | /3/12.057/0000/01/1000 10 |
| | 24-31 | /-366/+48.981/-113.906/052 011.8 003.2/52/91 280 1715/2/010.0 004.0 |
| | 24-31 | /+316/+53.225/-090.102/160 019.7 009.7/48/91 280 1750/2/010.0 004.0 |
| INFO | 11-15 | /3662/+1/-12948.0 013.0 +01.00/91 280 1630 18.00/0 |
| | 16-20 | /2/07.925/0000/00/0000 00 |
| | 24-31 | /+316/+54.889/-121.880/047 004.2 002.3/79/00 000 0000/3/012.0 006.0 |
| | 24-31 | /+316/+55.853/-152.416/159 004.2 002.9/21/00 000 0000/3/023.0 010.0 |
| | 42 | /LASSIT |
| | 43 | /ENDMSG |
| TRAILER | | (as per communication network requirements if any) |

Note: MF #4 must reflect SIT which is being used.

**SAMPLE MESSAGE FOR
SIT 121**

| FORMAT FRAMES | MF# | CONTENT |
|------------------|-------|--|
| HEADER | | (as per communication network requirements if any) |
| | 1,2,3 | /01612 01600/3660/91 280 1705 |
| | 4-6,8 | /121/3160/002/01 |
| | 11-15 | /3663/+4/-03446.0 006.0 +11.00/91 280 1630 23.50/0 |
| | 16-20 | /3/12.057/0000/01/1000 10 |
| | 24-31 | /-366/+48.981/-113.906/052 011.8 003.2/52/91 280 1715/2/010.0 004.0 |
| | 24-31 | /+316/+53.225/-090.102/160 019.7 009.7/48/91 280 1750/2/010.0 004.0 |
| | 42 | /LASSIT |
| | 43 | /ENDMSG |
| TRAILER | | (as per communication network requirements if any) |

**SAMPLE MESSAGE FOR
SIT 122, 123, 124, 132**

| FORMAT FRAMES | MF# | CONTENT |
|------------------|-------------|--|
| HEADER | | (as per communication network requirements if any) |
| INFO | 1,2,3 | /01614 00000/3660/80 005 1750 |
| | 4-6,10 | /122/3160/102/02 |
| | 11,13,14,21 | /3661/-03496.0 006.0 +11.00/80 005 1700 20.00/02 |
| | 23 | /123456789ABCDEF012345600000000 |
| | 11,13,14,21 | /3661/-03496.0 006.0 +11.00/80 005 1700 20.00/02 |
| | 23 | /23456789ABCDEF0123456700000000 |
| | 42 | /LASSIT |
| | 43 | /ENDMSG |
| TRAILER | | (as per communication network requirements if any) |

Note: MF #4 must reflect SIT which is being used.

SAMPLE MESSAGE FOR SIT 125, 126, 127, 133

| FORMAT FRAMES | MF# | CONTENT |
|------------------|----------|--|
| HEADER | | (As per communication network requirements if any) |
| | 1,2,3 | /00127 00117/5120/91 280 1843 |
| | 4-6,8 | /125/3660/004/02 |
| | 11-15 | /5121/-4/-00405.0 001.0 -00.70/91 280 1516 16.00/1 |
| | 16-18,21 | /0/15.859/0000/07 |
| | 23 | /56E680AD19602009C7C7D000000000 |
| | 24-31 | /+227/+22.811/-017.447/276 000.3 000.1/90/00 000 0000/3/010.0 000.0 |
| INFO | 24-31 | /+366/+24.755/+017.906/074 003.5 001.6/10/00 000 0000/3/040.0 002.0 |
| | 11-15 | /5121/-4/-00407.9 001.0 +00.40/91 280 1657 06.00/1 |
| | 16-18,21 | /0/00.707/0000/18 |
| | 23 | /56E680AD19602009C7C7D000000000 |
| | 24-31 | /+227/+22.826/-017.686/077 001.5 000.1/51/00 000 0000/2/020.0 001.0 |
| | 24-31 | /+366/+23.181/-016.104/077 001.5 000.1/49/00 000 0000/2/020.0 001.0 |
| | 42 | /LASSIT |
| | 43 | /ENDMSG |
| TRAILER | | (as per communication network requirements if any) |

Note: MF #4 must reflect SIT which is being used.

SAMPLE MESSAGE FOR SIT 185
SAMPLE 406 MHz INITIAL ENCODED POSITION ALERT
(STANDARD LOCATION – EPIRB: SERIAL NUMBER)

1. DISTRESS COSPAS-SARSAT INITIAL ALERT
2. MSG NO: 00306 AUMCC REF: 12345
3. DETECTED AT: 17 APR 07 1627 UTC BY GOES 11
4. DETECTION FREQUENCY: 406.0250 MHz
5. COUNTRY OF BEACON REGISTRATION: 316/ CANADA
6. USER CLASS: STANDARD LOCATION - EPIRB
SERIAL NO: 05918
7. EMERGENCY CODE: NIL
8. POSITIONS:
RESOLVED - NIL
DOPPLER A - NIL
DOPPLER B - NIL
ENCODED - 05 00 00 S 178 00 00 E
UPDATE TIME WITHIN 4 HOURS OF DETECTION TIME
9. ENCODED POSITION PROVIDED BY: EXTERNAL DEVICE
10. NEXT PASS TIMES:
RESOLVED - NIL
DOPPLER A - NIL
DOPPLER B - NIL
ENCODED - NIL
11. HEX ID: 278C362E3CFFBFF HOMING SIGNAL: 121.5 MHZ
12. ACTIVATION TYPE: NIL
13. BEACON NUMBER ON AIRCRAFT OR VESSEL: NIL
14. OTHER ENCODED INFORMATION:
CSTA CERTIFICATE NO: 0108
BEACON MODEL - ACR, RLB-33
ENCODED POSITION UNCERTAINTY: PLUS-MINUS 30 MINUTES OF
LATITUDE AND LONGITUDE
15. OPERATIONAL INFORMATION:
LUT ID: NZGEO1 WELLINGTON GEOLUT, NEW ZEALAND (GOES 11)
BEACON REGISTRATION AT [CMCC]
16. REMARKS: NIL

END OF MESSAGE

SAMPLE MESSAGE FOR SIT 185
SAMPLE 406 MHz UNLOCATED ALERT
(NATIONAL LOCATION – ELT)

1. DISTRESS COSPAS-SARSAT ALERT
 2. MSG NO: 00141 SPMCC REF: 12345
 3. DETECTED AT: 21 FEB 07 0646 UTC BY MSG-2
 4. DETECTION FREQUENCY: 406.0249 MHz
 5. COUNTRY OF BEACON REGISTRATION: 408/ BAHRAIN
 6. USER CLASS: NATIONAL LOCATION - ELT
SERIAL NO: 000006
 7. EMERGENCY CODE: NIL
 8. POSITIONS:
RESOLVED - NIL
DOPPLER A - NIL
DOPPLER B - NIL
ENCODED - NIL
UPDATE TIME WITHIN 4 HOURS OF DETECTION TIME
 9. ENCODED POSITION PROVIDED BY: EXTERNAL DEVICE
 10. NEXT PASS TIMES:
RESOLVED - NIL
DOPPLER A - NIL
DOPPLER B - NIL
ENCODED - NIL
 11. HEX ID: 331000033F81FE0 HOMING SIGNAL: 121.5 MHZ
 12. ACTIVATION TYPE: NIL
 13. BEACON NUMBER ON AIRCRAFT OR VESSEL: NIL
 14. OTHER ENCODED INFORMATION: NIL
 15. OPERATIONAL INFORMATION:
BEACON REGISTRATION AT WWW.406REGISTRATION.COM
 16. REMARKS: NIL
- END OF MESSAGE

SAMPLE MESSAGE FOR SIT 185
SAMPLE 406 MHz RESOLVED POSITION ALERT
(NATIONAL LOCATION - PLB)

1. DISTRESS COSPAS-SARSAT POSITION RESOLVED ALERT
2. MSG NO: 00812 AUMCC REF: 2DD747073F81FE0
3. DETECTED AT: 28 APR 07 0920 UTC BY SARSAT S11
4. DETECTION FREQUENCY: 406.0278 MHz
5. COUNTRY OF BEACON REGISTRATION: 366/ USA
6. USER CLASS: NATIONAL LOCATION - PLB
SERIAL NO: 167438
7. EMERGENCY CODE: NIL
8. POSITIONS:
RESOLVED - 33 27 N 038 56 E
DOPPLER A - 33 27 N 038 56 E
DOPPLER B - NIL
ENCODED - 33 25 56 N 038 55 40 E UPDATE TIME
WITHIN 4 HOURS OF DETECTION TIME
9. ENCODED POSITION PROVIDED BY: INTERNAL DEVICE
10. NEXT PASS TIMES:
RESOLVED - NIL
DOPPLER A - NIL
DOPPLER B - NIL
ENCODED - NIL
11. HEX ID: 2DD747073F81FE0 HOMING SIGNAL: 121.5 MHZ
12. ACTIVATION TYPE: NIL
13. BEACON NUMBER ON AIRCRAFT OR VESSEL: NIL
14. OTHER ENCODED INFORMATION: NIL
15. OPERATIONAL INFORMATION:
LUT ID: FRLUT2 TOULOUSE, FRANCE
16. REMARKS: NIL

END OF MESSAGE

SAMPLE MESSAGE FOR SIT 185
SAMPLE 406 MHz NOCR ENCODED POSITION ALERT
(NATIONAL LOCATION – PLB)

1. DISTRESS COSPAS-SARSAT NOTIFICATION OF COUNTRY OF BEACON REGISTRATION ALERT
2. MSG NO: 01737 AUMCC REF: 3EF6C34FBF81FE0
3. DETECTED AT: 20 MAR 07 0504 UTC BY SARSAT S08
4. DETECTION FREQUENCY: 406.0216 MHz
5. COUNTRY OF BEACON REGISTRATION: 503/ AUSTRALIA
6. USER CLASS: NATIONAL LOCATION - PLB
SERIAL NO: 099999
7. EMERGENCY CODE: NIL
8. POSITIONS:
RESOLVED - NIL
DOPPLER A - NIL
DOPPLER B - NIL
ENCODED - 28 06 00 S 153 24 00 E
UPDATE TIME WITHIN 4 HOURS OF DETECTION TIME
9. ENCODED POSITION PROVIDED BY: EXTERNAL DEVICE
10. NEXT PASS TIMES:
RESOLVED - NIL
DOPPLER A - NIL
DOPPLER B - NIL
ENCODED - 20 MAR 07 1417 UTC NZLUT WELLINGTON LUT NEW ZEALAND
11. HEX ID: 3EF6C34FBF81FE0
HOMING SIGNAL: OTHER (NOT 121.5 MHZ) OR NIL
12. ACTIVATION TYPE: NIL
13. BEACON NUMBER ON AIRCRAFT OR VESSEL: NIL
14. OTHER ENCODED INFORMATION:
ENCODED POSITION UNCERTAINTY:
PLUS-MINUS 4 SECONDS IN LATITUDE AND LONGITUDE
15. OPERATIONAL INFORMATION:
LUT ID: ASLUT CAPE TOWN, SOUTH AFRICA
16. REMARKS: NIL

END OF MESSAGE

SAMPLE MESSAGE FOR SIT 185
SAMPLE 406 MHz INITIAL POSITION ALERT
(STANDARD LOCATION – ELT: 24-BIT ADDRESS)

1. DISTRESS COSPAS-SARSAT INITIAL ALERT
2. MSG NO: 00741 AUMCC REF: 3266E2019CFFBFF
3. DETECTED AT: 22 APR 07 0912 UTC BY SARSAT S10
4. DETECTION FREQUENCY: 406.0247 MHz
5. COUNTRY OF BEACON REGISTRATION: 403/ SAUDI
6. USER CLASS: STANDARD LOCATION - ELT
AIRCRAFT 24 BIT ADDRESS: 7100CE
7. EMERGENCY CODE: NIL
8. POSITIONS:
RESOLVED - NIL
DOPPLER A - 32 49 N 081 54 E PROB 69 PERCENT
DOPPLER B - 24 18 N 041 18 E PROB 31 PERCENT
ENCODED - NIL
UPDATE TIME WITHIN 4 HOURS OF DETECTION TIME
9. ENCODED POSITION PROVIDED BY: EXTERNAL DEVICE
10. NEXT PASS TIMES:
RESOLVED - NIL
DOPPLER A - NIL
DOPPLER B - NIL
ENCODED - NIL
11. HEX ID: 3266E2019CFFBFF HOMING SIGNAL: 121.5 MHZ
12. ACTIVATION TYPE: NIL
13. BEACON NUMBER ON AIRCRAFT OR VESSEL: NIL
14. OTHER ENCODED INFORMATION:
AIRCRAFT 24-BIT ADDRESS ASSIGNED TO: SAUDI ARABIA
15. OPERATIONAL INFORMATION:
LUT ID: INLUT1 BANGALORE, INDIA
16. REMARKS: NIL

END OF MESSAGE

SAMPLE MESSAGE FOR SIT 185
SAMPLE 406 MHz INVALID ALERT
(AS PER C/S A.001, SECTION III/B.1.1.3)

1. DISTRESS COSPAS-SARSAT INITIAL ALERT
 2. MSG NO: 00506 AUMCC REF: 12345
 3. DETECTED AT: 01 APR 07 0610 UTC BY SARSAT S08
 4. DETECTION FREQUENCY: 406.0315 MHz
 5. COUNTRY OF BEACON REGISTRATION: NIL
 6. USER CLASS: NIL
 7. EMERGENCY CODE: NIL
 8. POSITIONS:
 - RESOLVED - NIL
 - DOPPLER A - 07 23 S 136 46 E PROB 92 PERCENT
 - DOPPLER B - 03 00 S 155 08 E PROB 08 PERCENT
 - ENCODED - NIL
 - UPDATE TIME WITHIN 4 HOURS OF DETECTION TIME
 9. ENCODED POSITION PROVIDED BY: NIL
 10. NEXT PASS TIMES:
 - RESOLVED - NIL
 - DOPPLER A - NIL
 - DOPPLER B - NIL
 - ENCODED - NIL
 11. HEX ID: 4C4B4E007688888
 12. ACTIVATION TYPE: NIL
 13. BEACON NUMBER ON AIRCRAFT OR VESSEL: NIL
 14. OTHER ENCODED INFORMATION:
 15. OPERATIONAL INFORMATION:
 - THE B POSITION IS LIKELY TO BE AN IMAGE POSITION
 - DATA DECODED FROM THE BEACON MESSAGE IS NOT RELIABLE
 16. REMARKS: NIL
- END OF MESSAGE

SAMPLE MESSAGE FOR SIT 185
SAMPLE 406 MHz RESOLVED UPDATE POSITION ALERT
(STANDARD LOCATION – SHIP SECURITY)

1. SHIP SECURITY COSPAS-SARSAT POSITION RESOLVED UPDATE ALERT
 2. MSG NO: 00192 AUMCC REF: 2AB82AF800FFBFF
 3. DETECTED AT: 03 MAY 07 0853 UTC BY SARSAT S09
 4. DETECTION FREQUENCY: 406.0276 MHz
 5. COUNTRY OF BEACON REGISTRATION: 341/ ST KITTS
 6. USER CLASS: STANDARD LOCATION – SHIP SECURITY
MMSI LAST 6 DIGITS: 088000
 7. EMERGENCY CODE: NIL
 8. POSITIONS:
RESOLVED - 02 15 N 046 00 E
DOPPLER A - 02 25 N 046 06 E
DOPPLER B - NIL
ENCODED - 01 54 24 N - 045 37 32 E
UPDATE TIME WITHIN 4 HOURS OF DETECTION TIME
 9. ENCODED POSITION PROVIDED BY: EXTERNAL DEVICE
 10. NEXT PASS TIMES:
RESOLVED - NIL
DOPPLER A - NIL
DOPPLER B - NIL
ENCODED - NIL
 11. HEX ID: 2AB82AF800FFBFF
HOMING SIGNAL: OTHER (NOT 121.5 MHZ) OR NIL
 12. ACTIVATION TYPE: NIL
 13. BEACON NUMBER ON AIRCRAFT OR VESSEL: 00
 14. OTHER ENCODED INFORMATION: NIL
 15. OPERATIONAL INFORMATION:
LUT ID: NZLUT WELLINGTON, NEW ZEALAND
 16. REMARKS:
THIS IS A SHIP SECURITY ALERT.
PROCESS THIS ALERT ACCORDING TO RELEVANT SECURITY REQUIREMENTS
- END OF MESSAGE

SAMPLE MESSAGE FOR SIT 185
SAMPLE 406 MHz DOPPLER POSITION CONFLICT ALERT
(SERIAL USER-LOCATION – ELT: 24-BIT ADDRESS)

1. DISTRESS COSPAS-SARSAT DOPPLER POSITION CONFLICT ALERT
2. MSG NO: 02698 AUMCC REF: C1ADE28809C0185
3. DETECTED AT: 06 APR 07 1440 UTC BY SARSAT S11
4. DETECTION FREQUENCY: 406.0246 MHz
5. COUNTRY OF BEACON REGISTRATION: 525/ INDONESIA
6. USER CLASS: SERIAL USER-LOCATION - ELT
AIRCRAFT 24-BIT ADDRESS: 8A2027
7. EMERGENCY CODE: NIL
8. POSITIONS:
RESOLVED - NIL
DOPPLER A - 07 00 S 098 42 E PROB 50 PERCENT
DOPPLER B - 05 42 S 107 20 E PROB 50 PERCENT
ENCODED - NIL
UPDATE TIME WITHIN 4 HOURS OF DETECTION TIME
9. ENCODED POSITION PROVIDED BY: INTERNAL DEVICE
10. NEXT PASS TIMES:
RESOLVED - NIL
DOPPLER A - 06 APR 07 1805 UTC AULUTW ALBANY LUT AUSTRALIA
DOPPLER B - 06 APR 07 1956 UTC AULUTW ALBANY LUT AUSTRALIA
ENCODED - NIL
11. HEX ID: C1ADE28809C0185 HOMING SIGNAL: 121.5 MHZ
12. ACTIVATION TYPE: NIL
13. BEACON NUMBER ON AIRCRAFT OR VESSEL: 00
14. OTHER ENCODED INFORMATION:
CSTA CERTIFICATE NO: 0097
BEACON MODEL - TECHTEST, UK: 503-1
AIRCRAFT 24-BIT ADDRESS ASSIGNED TO: INDONESIA
15. OPERATIONAL INFORMATION:
RELIABILITY OF DOPPLER POSITION DATA - SUSPECT
LUT ID: INLUT1 BANGALORE, INDIA
16. REMARKS:
THIS POSITION 51 KILOMETRES FROM PREVIOUS ALERT

END OF MESSAGE

SAMPLE MESSAGE FOR SIT 185
SAMPLE 406 MHz INITIAL ALERT
(SERIAL USER – EPIRB: NON-FLOAT FREE)

1. DISTRESS COSPAS-SARSAT INITIAL ALERT
2. MSG NO: 01087 AUMCC REF: ADCE402FA80028D
3. DETECTED AT: 20 MAY 07 1613 UTC BY SARSAT S08
4. DETECTION FREQUENCY: 406.0266 MHz
5. COUNTRY OF BEACON REGISTRATION: 366/ USA
6. USER CLASS: SERIAL USER – EPIRB (NON-FLOAT FREE)
SERIAL NO: 0003050
7. EMERGENCY CODE: NIL
8. POSITIONS:
RESOLVED - NIL
DOPPLER A - 36 38 S 168 58 E PROB 50 PERCENT
DOPPLER B - 36 39 S 169 01 E PROB 50 PERCENT
ENCODED - NIL
9. ENCODED POSITION PROVIDED BY: NIL
10. NEXT PASS TIMES:
RESOLVED - NIL
DOPPLER A - 21 MAY 07 0812 UTC
DOPPLER B - 21 MAY 07 0812 UTC
ENCODED - NIL
11. HEX ID: ADCE402FA80028D HOMING SIGNAL: 121.5 MHZ
12. ACTIVATION TYPE: MANUAL
13. BEACON NUMBER ON AIRCRAFT OR VESSEL: NIL
14. OTHER ENCODED INFORMATION:
CSTA CERTIFICATE NO: 0163
BEACON MODEL - MCMURDO LTD: G5 OR E5 SMARTFIND
15. OPERATIONAL INFORMATION:
RELIABILITY OF DOPPLER POSITION DATA - SUSPECT
LUT ID: AULUTW ALBANY, AUSTRALIA
16. REMARKS: NIL

END OF MESSAGE

SAMPLE MESSAGE FOR SIT 185
SAMPLE 406 MHz RESOLVED ALERT
(ELT USER – AIRCRAFT REGISTRATION)

1. DISTRESS COSPAS-SARSAT POSITION RESOLVED ALERT
2. MSG NO: 00932 AUMCC REF: 9D064BED62EAFE1
3. DETECTED AT: 10 MAY 07 0654 UTC BY SARSAT S11
4. DETECTION FREQUENCY: 406.0246 MHz
5. COUNTRY OF BEACON REGISTRATION: 232/ G. BRITAIN
6. USER CLASS: ELT USER
AIRCRAFT REGISTRATION: VP-CGK
7. EMERGENCY CODE: NIL
8. POSITIONS:
RESOLVED - 25 13 N 055 22 E
DOPPLER A - 25 17 N 055 23 E
DOPPLER B - NIL
ENCODED - NIL
9. ENCODED POSITION PROVIDED BY: NIL
10. NEXT PASS TIMES:
RESOLVED - NIL
DOPPLER A - NIL
DOPPLER B - NIL
ENCODED - NIL
11. HEX ID: 9D064BED62EAFE1 HOMING SIGNAL: 121.5 MHZ
12. ACTIVATION TYPE: MANUAL
13. BEACON NUMBER ON AIRCRAFT OR VESSEL: NIL
14. OTHER ENCODED INFORMATION: NIL
15. OPERATIONAL INFORMATION: NIL
16. REMARKS: NIL

END OF MESSAGE

**SAMPLE MESSAGE FOR
SIT 185
SAMPLE 121.5 MHz INITIAL ALERT**

1. DISTRESS COSPAS-SARSAT INITIAL ALERT
2. MSG NO. 18001 UKMCC REF 40007/40008
3. DETECTED AT 22 FEB 96 1738 UTC BY SARSAT 02
4. DETECTION FREQUENCY 121.5678 MHz
5. NIL
6. NIL
7. NIL
8. POSITIONS
 - RESOLVED - NIL
 - DOPPLER A - 56 16.1N 001 18.4W PROB 50
 - DOPPLER B - 54 47.9N 019 37.0W PROB 50
 - ENCODED - NIL
9. NIL
10. NEXT PASS TIMES
 - RESOLVED - NIL
 - DOPPLER A - 22 FEB 96 1830 UTC
 - DOPPLER B - 22 FEB 96 1831 UTC
 - ENCODED - NIL
11. NIL
12. NIL
13. NIL
14. NIL
15. OPERATIONAL INFORMATION
 - A. DOPPLER TECHNICAL QUALITY - FAIR
16. REMARKS - NIL

END OF MESSAGE

**SAMPLE MESSAGE FOR
SIT 215, 216**

| FORMAT FRAMES | MF# | CONTENT |
|------------------|--------|---|
| HEADER | | (as per communication network requirements if any) |
| | 1,2,3 | /00011 00005/3660/91 280 1844 |
| | 4,5,44 | /215/3160/02 |
| | 6,7,32 | /002/35144/01 |
| | 34 | /91 281 0000 00.000 |
| | 35,36 | /+1624.4912 -8839.7195 -1719.9279/-001.28323 -002.07614 +007.11246 |
| INFO | 6,7,32 | /106/02872/01 |
| | 34 | /91 281 0000 00.000 |
| | 35,36 | /-5287.2876 +4838.8309 +1711.7118/-001.55450 +000.87006 -007.08719 |
| | 42 | /LASSIT |
| | 43 | /ENDMSG |
| TRAILER | | (as per communication network requirements if any) |

**SAMPLE MESSAGE FOR
SIT 415**

| FORMAT FRAMES | MF# | CONTENT |
|------------------|-----------|---|
| HEADER | | (as per communication network requirements if any) |
| INFO | 1,2,3 | /00022 00015/3660/80 100 1630 |
| | 4-7,37,38 | /415/3160/101/01135/80 161 1856 24.239/12345678.123 |
| | 42 | /LASSIT |
| | 43 | /ENDMSG |
| TRAILER | | (as per communication network requirements if any) |

**SAMPLE MESSAGE FOR
SIT 416, 425, 445, 515, 525, 545, 605, 915**

| FORMAT FRAMES | MF# | CONTENT |
|------------------|-------|---|
| HEADER | | (as per communication network requirements if any) |
| INFO | 1,2,3 | /00030 00015/3660/80 160 1550 |
| | 4,5 | /416/3160 |
| | 41 | /THE NARRATIVE TEXT IN PRINTABLE CHARACTERS IS PLACED HERE, WITH NO MORE THAN 69 CHARACTERS PER LINE. QQQQ |
| | 42 | /LASSIT |
| | 43 | /ENDMSG |
| TRAILER | | (as per communication network requirements if any) |

Note: MF #4 must reflect SIT which is being used.

**SAMPLE MESSAGE FOR
SIT 417**

| FORMAT FRAMES | MF# | CONTENT |
|------------------|------------|---|
| HEADER | | (as per communication network requirements if any) |
| INFO | 1,2,3 | /00022 00015/3660/80 100 1630 |
| | 4-7,37,38a | /417/3160/011/01135/80 161 1856 24.239/12345678.123 |
| | 42 | /LASSIT |
| | 43 | /ENDMSG |
| TRAILER | | (as per communication network requirements if any) |

**SAMPLE MESSAGE FOR
SIT 435, 535**

| FORMAT FRAMES | MF# | CONTENT |
|------------------|-----|---------|
|------------------|-----|---------|

| | | |
|--------|--|--|
| HEADER | (as per communication network requirements if any) | |
|--------|--|--|

| | | |
|------|-------|-------------------------------|
| INFO | 1,2,3 | /79566 00000/3160/08 191 1348 |
|------|-------|-------------------------------|

| | |
|----------|------------------|
| 4,5,6,33 | /535/3660/008/02 |
|----------|------------------|

| | | |
|-------|-----------|---------------------|
| 39,40 | /DISC121A | R/08 211 0000 00.00 |
|-------|-----------|---------------------|

| | | |
|-------|-----------|---------------------|
| 39,40 | /DISC243A | R/08 211 0000 00.00 |
|-------|-----------|---------------------|

| | | |
|----|------------------------|--|
| 41 | /TO: USMCC FM: CTEC | |
|----|------------------------|--|

SATELLITE S8 NOAA 16
COMMANDS TO BE SENT AT THE SOCC CONVENIENCE ON 29
JULY 2008

QQQQ

| | | |
|----|---------|--|
| 42 | /LASSIT | |
|----|---------|--|

| | | |
|----|---------|--|
| 43 | /ENDMSG | |
|----|---------|--|

| | | |
|---------|--|--|
| TRAILER | (as per communication network requirements if any) | |
|---------|--|--|

Note: MF#4 must reflect the SIT being used.

**SAMPLE MESSAGE FOR
SIT 510**

| FORMAT FRAMES | MF# | CONTENT |
|------------------|------------|--|
| HEADER | | (as per communication network requirements if any) |
| INFO | 1,2,3 | /66289 00000/3160/01 147 2249 |
| | 4,5,44 | /510/3160/04 |
| | 6,64,65,66 | /008/-0039.238/+57.201/01 147 1936 |
| | 6,64,65,66 | /007/-0038.325/+99.999/01 147 1520 |
| | 6,64,65,66 | /004/-0007.357/-52.301/01 147 1641 |
| | 6,64,65,66 | /006/-0001.000/+99.999/01 147 2056 |
| | 42 | /LASSIT |
| | 43 | /ENDMSG |
| TRAILER | | (as per communication network requirements if any) |

SAMPLE MESSAGE FOR REPORTING
SATELLITE PAYLOAD STATUS
USING SIT 605

| FORMAT FRAMES | MF# | CONTENT |
|------------------|-------|---|
| HEADER | | (as per communication network requirements if any) |
| | 1,2,3 | /12345 00000/3660/97 123 1234 |
| | 4,5 | /605/5030 |
| | 41 | / |
| | | TO: ALL MCCC FROM: USMCC SUBJECT: INITIAL OPERATIONAL CAPABILITY FOR SARSAT-6 SAR PAYLOAD |
| | | DATA CONSIDERED OPERATIONAL IN COSPAS-SARSAT (C/S A.001, TABLE II / F.1) |
| | | ----- 121 SARR: OPERATIONAL 243 SARR: OPERATIONAL 406 SARR: OPERATIONAL 406 SARP (LOCAL): NOT OPERATIONAL 406 SARP (GLOBAL): NOT OPERATIONAL PSEUDO MODE: NOT APPLICABLE |
| INFO | | STATUS OF SAR PAYLOAD (C/S A.001, TABLE II / F.2) |
| | | ----- L-BAND DOWNLINK: NORMAL 121 SARR: NORMAL 121 SARR GAIN CONTROL: AUTOMATIC 243 SARR: NORMAL 243 SARR GAIN CONTROL: AUTOMATIC 406 SARR: NORMAL 406 SARR GAIN CONTROL: AUTOMATIC 406 SARP (LOCAL): UNUSABLE 406 SARP (GLOBAL): UNUSABLE PSEUDO MODE: NOT APPLICABLE BANDWIDTH: NOT APPLICABLE |
| | | COMMENTS ----- SARP FAILED AFTER LAUNCH |
| | | QQQQ |
| | 42 | /LASSIT |
| | 43 | /ENDMSG |
| TRAILER | | (as per communication network requirements if any) |

SAMPLE MESSAGE FOR REPORTING
SATELLITE PAYLOAD STATUS
USING SIT 605

| FORMAT FRAMES | MF# | CONTENT |
|------------------|-------|---|
| HEADER | | (as per communication network requirements if any) |
| | 1,2,3 | /12345 00000/3660/97 123 1234 |
| | 4,5 | /605/5030 |
| | 41 | / |
| | | TO: ALL MCCS |
| | | FROM: USMCC |
| | | SUBJECT: DECLARATION OF OPERATION FOR COSPAS-6 SAR PAYLOAD |
| | | DATA CONSIDERED OPERATIONAL IN COSPAS-SARSAT (C/S A.001, TABLE II/F.1) |
| | | ----- |
| | | 121 SARR: OPERATIONAL |
| | | 243 SARR: NOT APPLICABLE |
| | | 406 SARR: NOT APPLICABLE |
| | | 406 SARP (LOCAL): OPERATIONAL |
| | | 406 SARP (GLOBAL): OPERATIONAL |
| | | PSEUDO MODE: NOT APPLICABLE |
| INFO | | STATUS OF SAR PAYLOAD (C/S A.001, TABLE II/F.2) |
| | | ----- |
| | | L-BAND DOWNLINK: NORMAL |
| | | 121 SARR: NORMAL |
| | | 121 SARR GAIN CONTROL: TO BE DETERMINED |
| | | 243 SARR: NOT APPLICABLE |
| | | 243 SARR GAIN CONTROL: NOT APPLICABLE |
| | | 406 SARR: NOT APPLICABLE |
| | | 406 SARR GAIN CONTROL: NOT APPLICABLE |
| | | 406 SARP (LOCAL): DEGRADED |
| | | 406 SARP (GLOBAL): DEGRADED |
| | | PSEUDO MODE: NOT APPLICABLE |
| | | BANDWIDTH: NOT APPLICABLE |
| | | COMMENTS |
| | | ----- |
| | | FAILURE IN ONE OF THE ON-BOARD DRUS |
| | | QQQQ |
| | 42 | /LASSIT |
| | 43 | /ENDMSG |
| | | ----- |
| TRAILER | | (as per communication network requirements if any) |

**SAMPLE MESSAGE FOR REPORTING
SATELLITE PAYLOAD STATUS
USING SIT 605**

| FORMAT FRAMES | MF# | CONTENT |
|------------------|-------|--|
| HEADER | | (as per communication network requirements if any) |
| | 1,2,3 | /12345 00000/3660/97 123 1234 |
| | 4,5 | /605/5030 |
| | 41 | / |
| | | TO: ALL MCCS FROM: CMCC SUBJECT: CHANGE IN STATUS FOR SARSAT-4 SAR PAYLOAD |
| | | DATA CONSIDERED OPERATIONAL IN COSPAS-SARSAT (C/S A.001, TABLE II/F.1) |
| | | ----- 121 SARR: OPERATIONAL 243 SARR: OPERATIONAL 406 SARR: NOT OPERATIONAL 406 SARP (LOCAL): OPERATIONAL 406 SARP (GLOBAL): OPERATIONAL PSEUDO MODE: NOT APPLICABLE |
| | | STATUS OF SAR PAYLOAD (C/S A.001, TABLE II/F.2) |
| INFO | | ----- L-BAND DOWNLINK: NORMAL 121 SARR: NORMAL 121 SARR GAIN CONTROL: AUTOMATIC 243 SARR: NORMAL 243 SARR GAIN CONTROL: AUTOMATIC 406 SARR: UNUSABLE 406 SARR GAIN CONTROL: NOT APPLICABLE 406 SARP (LOCAL): NORMAL 406 SARP (GLOBAL): NORMAL PSEUDO MODE: NOT APPLICABLE BANDWIDTH: NOT APPLICABLE |
| | | COMMENTS ----- THE 406 SARR IS NO LONGER USABLE, IT SHOULD NOW BE CONSIDERED NOT OPERATIONAL QQQQ |
| | 42 | /LASSIT |
| | 43 | /ENDMSG |
| TRAILER | | (as per communication network requirements if any) |

SAMPLE MESSAGE FOR REPORTING
SATELLITE PAYLOAD STATUS
USING SIT 605

| FORMAT FRAMES | MF# | CONTENT |
|------------------|-------|---|
| HEADER | | (as per communication network requirements if any) |
| ----- | 1,2,3 | /12345 00000/3660/97 123 1234 |
| | 4,5 | /605/5030 |
| | 41 | / |
| | | TO: ALL MCCS |
| | | FROM: CMC |
| | | SUBJECT: DECOMMISSIONING OF COSPAS-5 SAR PAYLOAD |
| | | DATA CONSIDERED OPERATIONAL IN COSPAS-SARSAT (C/S A.001, TABLE II / F.1) |
| | | ----- |
| | | 121 SARR: NOT OPERATIONAL |
| | | 243 SARR: NOT APPLICABLE |
| | | 406 SARR: NOT APPLICABLE |
| | | 406 SARP (LOCAL): NOT OPERATIONAL |
| | | 406 SARP (GLOBAL): NOT OPERATIONAL |
| | | PSEUDO MODE: NOT APPLICABLE |
| INFO | | STATUS OF SAR PAYLOAD (C/S A.001, TABLE II / F.2) |
| | | ----- |
| | | L-BAND DOWNLINK: UNUSABLE |
| | | 121 SARR: UNUSABLE |
| | | 121 SARR GAIN CONTROL: NOT APPLICABLE |
| | | 243 SARR: NOT APPLICABLE |
| | | 243 SARR GAIN CONTROL: NOT APPLICABLE |
| | | 406 SARR: NOT APPLICABLE |
| | | 406 SARR GAIN CONTROL: NOT APPLICABLE |
| | | 406 SARP (LOCAL): UNUSABLE |
| | | 406 SARP (GLOBAL): UNUSABLE |
| | | PSEUDO MODE: NOT APPLICABLE |
| | | BANDWIDTH: NOT APPLICABLE |
| | | COMMENTS |
| | | ----- |
| | | COSPAS-5 DECOMMISSIONED ON FEBRUARY 5 1996 |
| | | QQQQ |
| | 42 | /LASSIT |
| | 43 | /ENDMSG |
| ----- | | |
| TRAILER | | (as per communication network requirements if any) |

SAMPLE MESSAGE FOR REPORTING
SATELLITE PAYLOAD STATUS
USING SIT 605

| FORMAT FRAMES | MF# | CONTENT |
|------------------|-------|---|
| HEADER | | (as per communication network requirements if any) |
| _____ | 1,2,3 | /12345 00000/3660/97 123 1234 |
| | 4,5 | /605/5030 |
| | 41 | / |
| | | TO: ALL MCCS |
| | | FROM: USMCC |
| | | SUBJECT: DECLARATION OF OPERATION FOR GOES-9 SAR PAYLOAD |
| | | DATA CONSIDERED OPERATIONAL IN COSPAS-SARSAT (C/S A.001, TABLE II / F.1) |
| | | ----- |
| | | 406 SARR: OPERATIONAL |
| INFO | | STATUS OF SAR PAYLOAD (C/S A.001, TABLE II / F.2) |
| | | ----- |
| | | 406 SARR: NORMAL |
| | | 406 SARR GAIN CONTROL: AUTOMATIC |
| | | BANDWIDTH: 406.005 - 406.045 |
| | | POSITION: 135 W |
| | | DOWNLINK FREQUENCY/TYPE: 1544.5 MHZ / BROAD |
| | | COMMENTS |
| | | ----- |
| | | GOES-9 SHOULD BE CONSIDERED OPERATIONAL AS OF 5 MAY 1995 |
| | | QQQQ |
| | 42 | /LASSIT |
| | 43 | /ENDMSG |
| _____ | | |
| TRAILER | | (as per communication network requirements if any) |

**SAMPLE MESSAGE FOR
SIT 925**

| FORMAT FRAMES | MF# | CONTENT |
|------------------|-------|--|
| HEADER | | (as per communication network requirements if any) |
| | 1,2,3 | /12345 00000/3160/94 194 2200 |
| | 4,5 | /925/3660 |
| | 22 | /A78D00597040401 |
| INFO | 41 | / |
| | | BEACON INFO: FF 0/PF 1/CC 316/UC SER/ID 0005724/MODEL MAR/HS121/EC/AUT/00 HEX A78D0 05970 40401/LAT ::::/LNG ::::/::/::/::/::/::/::/:: |
| | | OWNER INFO: LAST NAME: COAST GUARD-M FIRST NAME: N/A COMPANY NAME: CCG DARTMOUTH BASE ADDRESS: P.O. BOX 1000 CITY: DARTMOUTH PROVINCE: NS COUNTRY: CANADA POSTAL CODE: B2Y SZ8 HOME PHONE: 902 426 6030 OFFICE PHONE: 902 426 3707 EXTENSION: PREFERRED LANGUAGE: ENGLISH COMMENTS: HOME NO: OPERATIONS NOTSHIP DESK (426 6030) BUSS NO: FLEET SUPERINTENDENT (426 3707) SEW WORKSHOP NO: (426 7017) |
| INFO | | VESSEL INFO: NAME: CCGS SIR WILLIAM ALE REGISTRATION/LICENCE NUMBER: 807685 HOME PORT: DARTMOUTH CALL SIGN: CGUM VESSEL LENGTH: 83 METERS CLASS: COLOUR: VESSEL TYPE: GOVERNMENT HULL: RED HULL: SINGLE HULL SAIL: N/A PROPULSION: POWER INBOARD SUPER STRUCTURE: WHITE DISTINCTIVE FEATURE: HELO DECK AND HANGAR; LIGHT ICEBREAKER/BUOY TENDER COMMENTS: 1-28FT F.G. BOAT 1-28FT SELF-PROPELLED STEEL BARGE 1-15FT ZODIAC; 1-6 MAN LIFERAFT CELLULAR: 902 456 9281 |
| | | QQQQ 42 /LASSIT 43 /ENDMSG |
| TRAILER | | (as per communication network requirements if any) |

**SAMPLE MESSAGE FOR
SIT 925**

| FORMAT FRAMES | MF# | CONTENT |
|------------------|-------|---|
| HEADER | | (as per communication network requirements if any) |
| | 1,2,3 | /12345 00000/3160/94 194 2200 |
| | 4,5 | /925/3660 |
| | 22 | /A78D00597040401 |
| INFO | 41 | / |
| | | FROM: CMCC TO: USMCC SUBJECT: BEACON REGISTRATION INFORMATION |
| | | BEACON INFO: FF 0/PF 1/CC 316/UC SER/ID 0005724/MODEL MAR/HS121/EC/AUT/00 HEX A78D0 05970 40401/LAT ::::/LNG ::::/::/::/::/::/:: |
| | | OWNER INFO: LAST NAME: COAST GUARD-M FIRST NAME: N/A COMPANY NAME: CCG DARTMOUTH BASE ADDRESS: P.O. BOX 1000 CITY: DARTMOUTH PROVINCE: NS COUNTRY: CANADA POSTAL CODE: B2Y SZ8 HOME PHONE: 902 426 6030 OFFICE PHONE: 902 426 3707 EXTENSION: PREFERRED LANGUAGE: ENGLISH COMMENTS: HOME NO: OPERATIONS NOTSHIP DESK (426 6030) BUSS NO: FLEET SUPERINTENDENT (426 3707) SEW WORKSHOP NO: (426 7017) |
| INFO | | VESSEL INFO: NAME: CCGS SIR WILLIAM ALE REGISTRATION/LICENCE NUMBER: 807685 HOME PORT: DARTMOUTH CALL SIGN: CGUM VESSEL LENGTH: 83 METERS CLASS: COLOUR: VESSEL TYPE: GOVERNMENT HULL: RED HULL: SINGLE HULL SAIL: N/A PROPULSION: POWER INBOARD SUPER STRUCTURE: WHITE DISTINCTIVE FEATURE: HELO DECK AND HANGAR; LIGHT ICEBREAKER/BUOY TENDER |
| | | COMMENTS: 1-28FT F.G. BOAT 1-28FT SELF-PROPELLED STEEL BARGE 1-15FT ZODIAC; 1-6 MAN LIFERAFT CELLULAR: 902 456 9281 |
| | | QQQQ |
| | 42 | /LASSIT |
| | 43 | /ENDMSG |
| TRAILER | | (as per communication network requirements if any) |

Note: MF #41 THE NARRATIVE TEXT IN PRINTABLE CHARACTERS IS PLACED HERE, WITH
NO MORE THAN 69 CHARACTERS PER LINE.

page left blank

This document has been superseded
by a later version

ANNEX D**USEFUL INFORMATION****(Standard Message Formats between MCC and RCC)****1. Acknowledgment of distress alert message:**FM: RCC
TO: MCC

DISTRESS ALERT REPORT (NUMBER)

A. MESSAGE RECEIVED

2. Request to repeat message:FM: RCC
TO: MCC

DISTRESS ALERT REPORT (NUMBER)

A. REPEAT REQUESTED

3. SAR operation completed:FM: RCC
TO: MCC

DISTRESS ALERT REPORT (NUMBER)

A. CASE CLOSED (SUSPENDED)
B. BEACON TURNED OFF**4. Request to "listen to" particular geographic area:**FM: RCC
TO: MCC

REQUEST FOR ALERT DATA

A. GEOGRAPHIC LOCATION
B. FREQUENCY
C. CANCELLATION DATE/TIME

5. Request for SAR data associated with satellite beacon:

FM: RCC
TO: MCC

REQUEST FOR ADDITIONAL INFORMATION FROM BEACON REGISTER

A. BEACON IDENTIFICATION CODE

- END OF ANNEX D -

This document has been superseded
by a later version

ANNEX E

COSPAS-SARSAT PROTOCOL FOR THE TRANSMISSION OF SIT MESSAGES VIA THE X.25 NETWORK

E.1 X.25 MESSAGE TRANSMISSION PROTOCOL

MCCs exchange messages in order to distribute information within the Cospas-Sarsat System.

The X.25 network (also referred to as the Public Switched Data Network or PSDN) is a general-purpose global data communication network supporting point-to-point electronic data communications. The X.25 network provides raw data communication capabilities.

The Cospas-Sarsat protocol for the transmission of SIT messages via the X.25 network builds upon the recommendations of the CCITT. These recommendations can be found in the publication "CCITT Blue Book, (Volume VIII – Fascicle VIII.2) Data Communication Networks: Services and Facilities, Interfaces Recommendations X.1-X.32".

Within the Cospas-Sarsat ground segment, the X.25 network may be used for the transmission of message data from one MCC to another. While the X.25 network allows MCCs to establish real-time data links, the CCITT recommendations themselves do not specify how messages should be exchanged over these links.

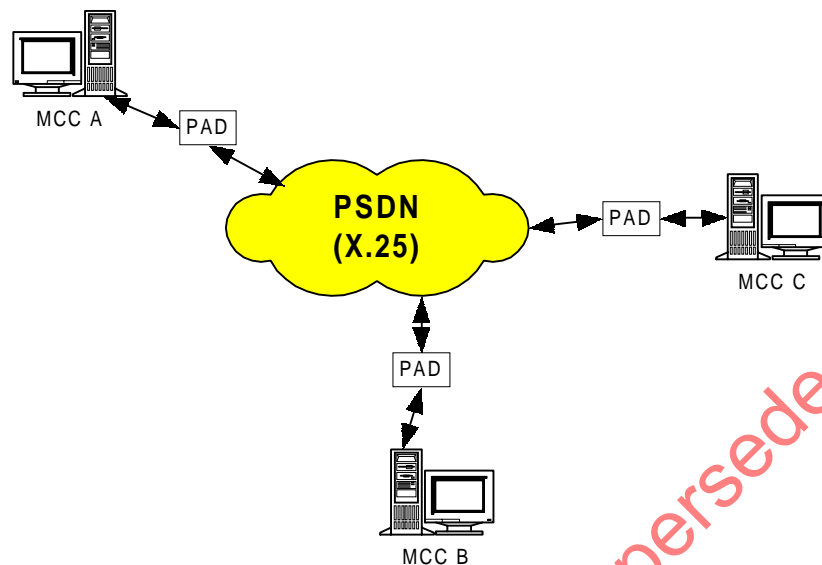
MCCs must exchange messages efficiently and reliably without data corruption or loss. There is a possibility for data loss within the X.25 network if the correct data exchange procedures are not observed. Therefore, it is mandatory that each MCC conduct message exchange in accordance with an agreed protocol.

This Annex specifies a basic message transmission protocol to be used by MCC computers when exchanging messages over the X.25 network.

E.2 X.25 NETWORK BASICS

The X.25 network is a global data network that allows computers to establish connections and exchange data. Data and control signals are conveyed across the X.25 network in discrete units called packets.

The following diagram shows the basic configuration of MCCs and the X.25 network.



An MCC computer is connected to the X.25 network via a Packet Assembler/Disassembler (PAD).

A PAD converts the continuous stream of message bytes output from an MCC into discrete packets for transmission on the X.25 network. The destination PAD converts the arriving packets back to a continuous stream of message bytes for processing by the receiving MCC.

The X.25 network can support permanent, semi-permanent and transient connections between MCCs. This document only describes procedures that relate to transient connections.

A transient X.25 connection is similar to a telephone call. The calling MCC uses its local PAD to place an X.25 call to the called MCC. The calling MCC must provide the X.25 network address (or number) of the called MCC. The PAD of the called MCC accepts the X.25 call thereby establishing a data connection between the two MCCs.

Once the connection has been established, the two MCC exchange data until one of the MCCs instructs its local PAD to clear the call. The X.25 connection is then complete. Within the Cospas-Sarsat System, most connections last only a few seconds.

E.3 X.25 RELATED PUBLICATIONS

A comprehensive technical description of the standards relating to the X.25 network are contained in publications of the International Telecommunications Union's (ITU) International Telegraph and Telephone Consultative Committee (CCITT) "Blue Book, (Volume VIII – Fascicle VIII.2) Data Communication Networks: Services and Facilities, Interfaces Recommendations X.1-X.32".

In particular the following recommendations are of direct relevance to MCCs which use the X.25 network:

- a) Recommendation X.25 – Interface between terminals and the packet mode public data networks;
- b) Recommendation X.28 – Interface between terminal equipment accessing a PAD in a public data network; and
- c) Recommendation X.29 – Procedures for the exchange of control information and data between PADs or a PAD and a packet mode terminal.

These publications are available via the ITU web site at <http://www.itu.int/>.

E.4 BASIC REQUIREMENTS FOR AN MCC CONNECTED TO THE X.25 NETWORK

This section describes the basic requirements that must be met by an MCC with respect to its X.25 network connection.

- a) an MCC connected to the X.25 network shall comply with the applicable CCITT recommendations;
- b) unless otherwise stated in this protocol, each MCC shall use default values for all parameters associated with the X.25 network and associated connections. All MCCs shall be capable of establishing an X.25 connection using the following parameters:

| | |
|-------------|-----------|
| Packet size | 128 bytes |
| Window size | 2 packets |

These and other default values are specified in the CCITT recommendations. On a bilateral basis, MCCs can use other values for these parameters;

- c) each MCC shall be capable of processing multiple simultaneous inbound and outbound X.25 connections; and
- d) each MCC shall be able to send data to another MCC on a connection it opened concurrent with receiving data on a connection opened by the other MCC.

E.5 X.25 CONNECTIONS

Figure E.1 depicts the phases of an X.25 connection.

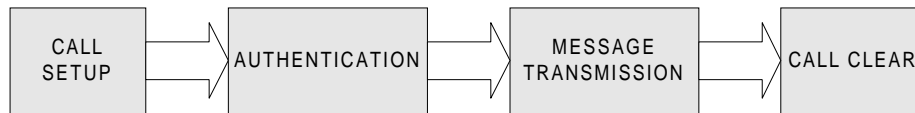


Figure E.1: Phases of an X.25 Connection

Figure E.2 shows the timing of packet flow in a typical X.25 connection.

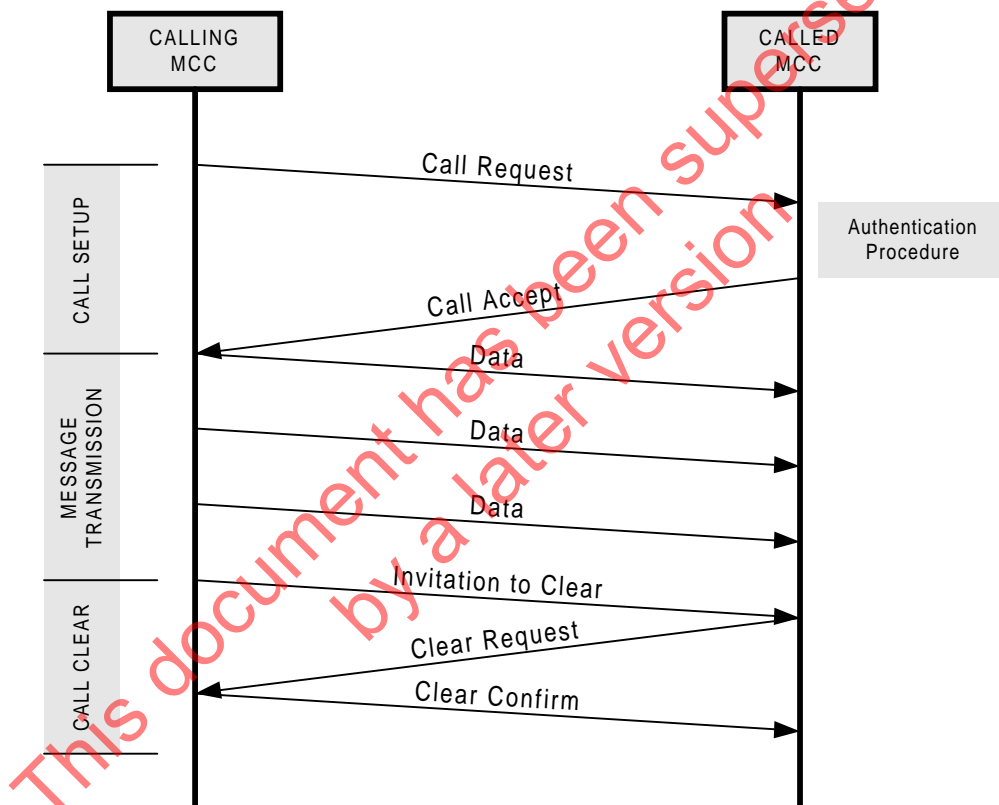


Figure E.2: Packet Flow in a Typical X.25 Connection

The following sections describe procedures that shall apply during each phase of the X.25 connection.

E.5.1 X.25 CALL SET-UP

The calling MCC initiates a connection via its local PAD which responds by issuing a **Call Request Packet**. Upon detecting the incoming call, the called MCC shall execute its authentication procedure to accept or reject the call. Subsequently, the called PAD will issue a **Call Accept Packet** or **Clear Request Packet**.

The exchange of the various control packets by the PADs is conducted according to the CCITT recommendations. In addition to the CCITT recommendations, MCCs must observe the following protocol:

- a) an MCC with message data to transmit (the calling MCC) shall initiate the X.25 connection to the destination MCC (the called MCC);
- b) the calling MCC shall provide sufficient information in the **Call Request Packet** to satisfy the called MCC's authentication procedure;
- c) an MCC shall only initiate one connection at a time to another MCC; and
- d) the calling MCC shall consider the call set-up procedure to be successful only upon receipt of a **Call Accept Packet**. Any other result shall be regarded as a failure of the X.25 connection.

E.5.2 AUTHENTICATION PROCEDURE

An MCC shall enforce the following authentication procedure to ensure that only authorised MCCs are permitted to establish X.25 connections. The authentication procedure makes use of the following information to verify the identity of the calling MCC:

- the authorised X.25 called address;
- the X.25 calling address (referred to as caller ID or CID); and
- call user data (CUD), a maximum of 16 bytes of agreed "password" data.

This above information shall be provided by the calling MCC in the **Call Request Packet**.

The following protocol shall be observed:

- a) Specific X.25 called address, CID and CUD values shall be determined by MCCs on a bilateral basis.
- b) The called MCC shall reject the call request if the required information is absent or inaccurate. Rejection of the call request shall be signalled by clearing the connection.

E.5.3 MESSAGE TRANSMISSION

The following procedure shall apply to the message transmission phase:

- a) immediately after call set-up is completed, the calling MCC shall transmit all of its message data;
- b) the calling MCC may send more than one SIT message during a single connection;
- c) when sending a SIT message via X.25, an MCC shall set the "M" bit in every packet except the last packet, to indicate that the series of data packets comprise one SIT message;
- d) once all data has been transmitted the calling MCC shall commence the call clear procedure by issuing an "invitation to clear (ITC)";
- e) after sending an ITC, the calling MCC shall send no more data on the X.25 connection; and
- f) the called MCC shall not transmit any data packets (data packets received by the calling MCC shall be deemed to be a failure of the X.25 connection).

E.5.4 CALL CLEAR PROCEDURE

Message data may be lost in the X.25 network if the connection is not correctly cleared. The following procedure shall be implemented to clear the X.25 connection:

- a) The calling MCC shall issue an ITC once all message data has been transmitted.
- b) Upon receiving an ITC, the called MCC shall immediately clear the connection by sending no diagnostic or by sending a clear diagnostic of 0.
- c) After sending an ITC, the calling MCC shall set a timer to ensure that the called MCC responds with a clear. If this timer expires, the calling MCC shall initiate a clear immediately and shall regard this event as a failure of the call clear procedure and of the X.25 connection. The period of this timer shall be 30 seconds. If the calling MCC clears the connection due to a timeout, it should set the clear diagnostic to 50.
- d) On accepting a connection, the called MCC shall set an idle timer. Whenever data is received the called MCC shall reset the idle timer. If this timer expires, the called MCC shall clear the connection immediately. The period of this timer shall be 45 seconds. If the called MCC clears the connection due to a timeout, it should set the clear diagnostic to 49.

- e) The calling MCC shall deem the call clear procedure to be successful only if, after issuing an ITC, it receives a Clear Indication with a clear cause of 0 or 128 - 255 (which indicates a clear originating at the called MCC) and a diagnostic of 0. If the connection is cleared in any other way the calling MCC shall deem the call clear procedure and the connection to have failed.
- f) The called MCC shall attempt to process all message data received on the X.25 connection irrespective of the manner in which the connection is cleared.

Figure E.3 depicts the clearing of the connection by the calling MCC should the called MCC fail to respond to the ITC for any reason.

Figure E.4 depicts the clearing of the connection by the called MCC should the connection remain open for any reason.

E.6 SUCCESSFUL TRANSMISSION AND RETRIES

The calling MCC shall deem a connection to be successful only if each phase of the X.25 connection (Call Set-up, Authentication, Message Transmission and Call Clear) is successfully completed.

In the event of a connection failure, the calling MCC shall consider all messages sent during the connection to be undelivered.

To cater for transient problems in the X.25 network (e.g. network congestion, remote party busy) the calling MCC may repeat (retry) an X.25 connection in the event of the failure of a connection. The time interval between retries shall not be less than 15 seconds.

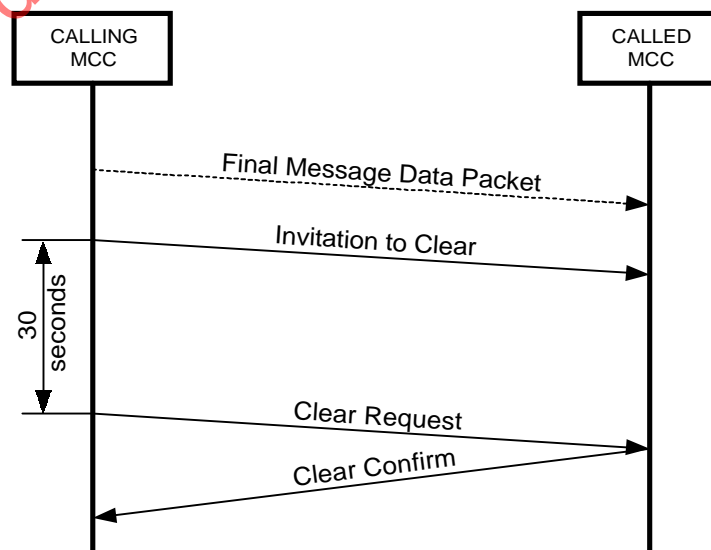


Figure E.3: Clearing Procedure if ITC Fails

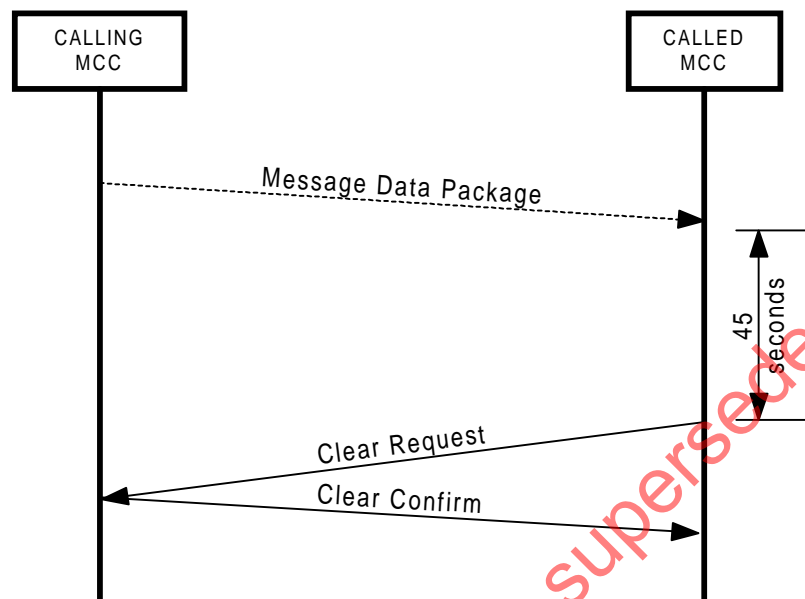


Figure E.4: Clearing Procedure by Called MCC

APPENDIX E.1 TO ANNEX E**X.25 CONNECTION PROCEDURES**

The following flowcharts depict the basic procedures to be followed when transmitting or receiving a message via the X.25 network.

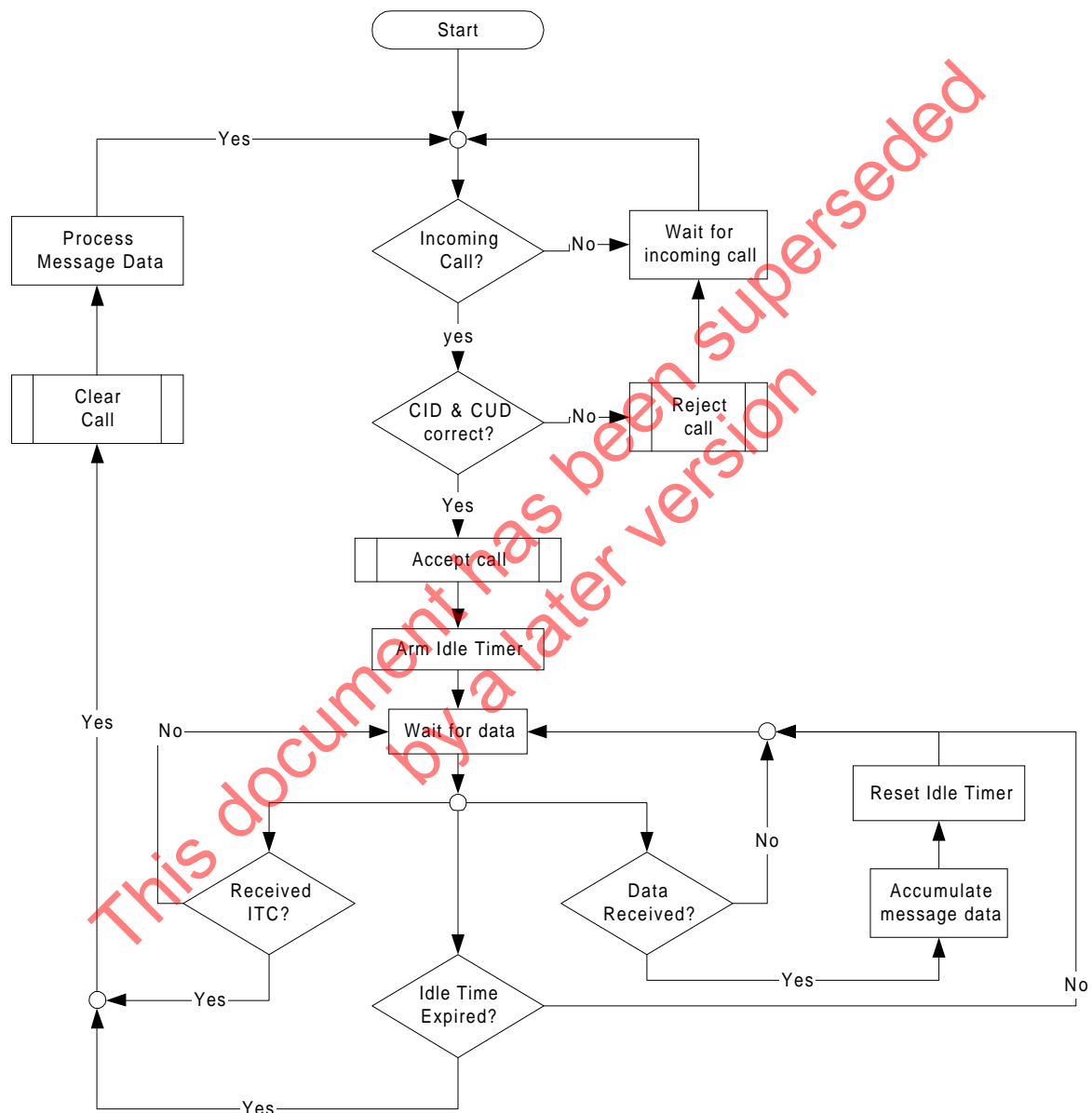
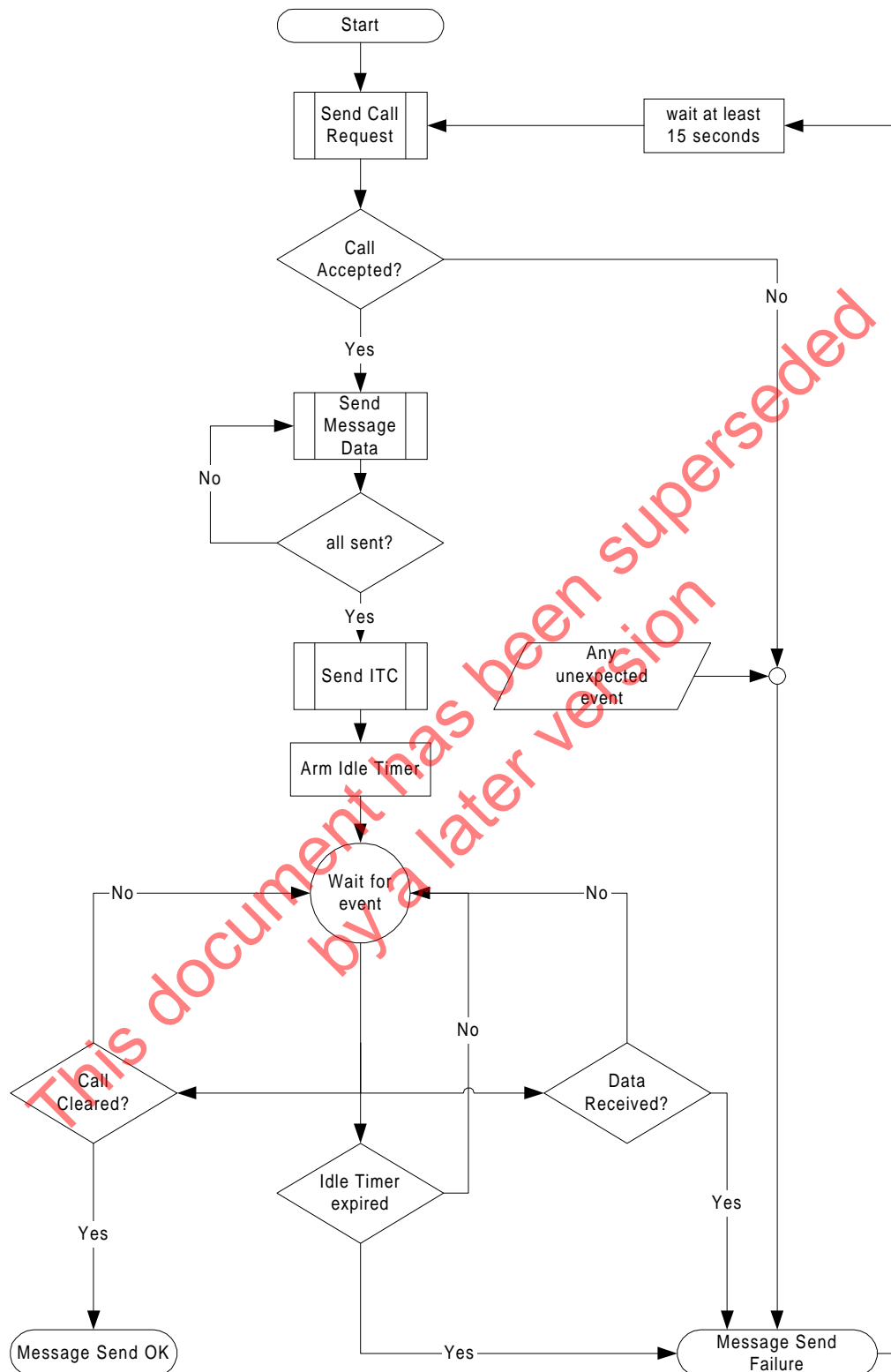


Figure E.5: X.25 Network Message Reception Procedure for the Called MCC

**Figure E.6: X.25 Network Message Transmission Procedure for the Calling MCC**

APPENDIX E.2 TO ANNEX E**DEFINITION OF X.25 TERMS**

| | |
|------------------|--|
| CALL REQUEST | An X.25 control packet used by a PAD to establish an X.25 connection to a remote PAD. |
| CALL ACCEPT | An X.25 control packet issued by a PAD when accepting an incoming X.25 call. |
| CALL REJECT | An X.25 control packet issued by a PAD when rejecting an incoming X.25 call. The packet contains "cause" and "diagnostic" codes indicating the reason for the rejection. For further information refer to the CCITT specification. |
| CALLING MCC | The MCC initiating the X.25 connection to the called MCC for the purpose of transmitting SIT message(s) to the called MCC. |
| CALLED MCC | The MCC accepting an incoming X.25 connection for the purpose of receiving SIT messages from the calling MCC. |
| CLEAR CONFIRM | An X.25 control packet issued by a PAD acknowledging the receipt of a Clear Request packet. |
| CLEAR REQUEST | An X.25 control packet issued by a PAD to inform the remote PAD that the connection has been terminated. |
| CLEAR INDICATION | A signal from an X.25 PAD indicating that the X.25 connection to the remote party has been cleared. |
| CID | Caller ID. The X.25 address advertised by the calling MCC and sent to the calling MCC in the call request packet. The CID field is defined in CCITT recommendation X.25 section 5.2.1. |
| CUD | Call User Data provided by the calling MCC to allow the called MCC to verify the identity of the caller. Maximum length is 16 bytes. The CUD field is defined in CCITT recommendation X.25 section 5.2.2.5. |
| ITC | Invitation to Clear. An X.25 control packet issued by the calling MCC, inviting the called MCC to clear the X.25 connection. The format of the ITC is defined in CCITT recommendation X.29 section 4.4.8. |

| | |
|--------|---|
| M BIT | “More Data bit”. When set (ON), indicates that the current message is continued in the next packet. When reset (OFF) indicates the end of the current message. The M bit is defined in CCITT recommendation X.25 section 5.3.1.4. |
| PAD | Packet Assembler/Disassembler. Termination unit for an X.25 network. A PAD in the X.25 network is analogous to a telephone handset in the public telephone network. |
| PACKET | A collection of data and/or control information transported as a discrete unit across an X.25 network connection. A packet may contain up to 128 bytes of data. |

- END OF ANNEX E -

This document has been superseded
by a later version

ANNEX F

COSPAS-SARSAT STANDARD FOR THE TRANSMISSION OF SIT MESSAGES VIA FTP

F.1 FILE TRANSFER PROTOCOL (FTP) COMMUNICATIONS

Each MCC communicating via FTP shall comply with the applicable standards described in the Internet Engineering Task Group document RFC 959 - File Transfer Protocol, which can be found at the following web address: www.ietf.org.

F.1.1 FILE NAMING CONVENTION

An MCC shall send a SIT message by writing a file on the FTP server of the receiving MCC. Each file shall contain exactly one SIT message.

The FTP file name format shall be “?SRCE_?DEST_?CUR#.TXT”, where:

- “?SRCE” is the Source MCC Name (per Table II/A.1 at Annex II/A to C/S A.001),
- “?DEST” is the Destination MCC Name (per Table II/A.1 at Annex II/A to C/S A.001),
- and
- “?CUR#” is the Current Message Number (Message Field 1).

The FTP file name shall contain only upper case characters. For example, a file with the name “USMCC_CMCC_02345.TXT” contains Current Message Number 02345 sent by the USMCC to the CMCC.

Any MCC that wants to receive data via FTP shall provide the Host Name and/or Internet Protocol (IP) Address, User Name, Password, and Message Directory Name in Table F.1, to enable other MCCs to place data on the FTP server of the receiving MCC. On a bilateral basis, the receiving and sending MCC should agree on passwords and other security measures. It is the responsibility of the receiving MCC to provide adequate security for its FTP server.

The sending MCC shall write a file with a file name extension of “.TMP” on the FTP server of the receiving MCC. A file is given a temporary name to prevent the receiving MCC from processing a file before it is complete. Once the file transfer is complete, the sending MCC shall rename the file with an extension “.TXT”. Once the file has been renamed, the sending MCC shall not manipulate the file. The receiving MCC shall not process files with an extension of “.TMP”. The receiving MCC shall be responsible for disposing of files placed on its FTP server. If the receiving MCC detects an anomalous condition in the FTP file transfer, it shall notify the transmitting MCC.

If a FTP file transfer fails for any reason the transmitting MCC shall try to resend the message, and notify the receiving MCC if the failure persists.

Each MCC communicating via FTP shall operate in binary transfer mode.

F.2 FILE TRANSFER PROTOCOL (FTP) INFORMATION LIST

A list of information used to send messages to an MCC via FTP is provided in this section. This list is composed of 6 items:

1. Receiving MCC
2. Host Name
3. IP Address
4. User Name
5. Password
6. Message Directory Path

F.2.1 Receiving MCC

The name of the MCC to receive data via FTP. This name matches the MCC Identification Code in Table II/A.1 at Annex II/A to C/S A.001.

F.2.2 Host Name

This is the FTP Host Name of the receiving MCC. *** indicates that the Host Name is provided on a need to know basis.

F.2.3 Internet Protocol (IP) Address

This is the Internet Protocol Address referenced to reach the receiving MCC. *** indicates that the IP Address is provided on a need to know basis.

F.2.4 User Name

The User Name required to login to the FTP server of the receiving MCC. If the value is "Sending MCC Name", then the user name is the name of the sending MCC, per Table B.2. *** indicates that the User Name is provided on a need to know basis.

F.2.5 Password

The password required to access the FTP server of the receiving MCC. *** indicates that the Password is provided on a need to know basis.

F.2.6 Message Directory Path

The path of the directory into which message files shall be written. <MCCname> indicates that each MCC will put messages in a sub-directory per MCC, where the sub-directory name is the name of the sending MCC, per Table II/A.1 at Annex II/A to C/S A.001.

F.3 SECURITY

All MCCs with an Internet connection must be protected by firewall technology.

F.3.1 Passwords

MCCs shall formulate passwords using security best practices. The passwords shall have the following characteristics:

- Contain at least 8 characters
- Not have any characters that are “blank”
- Six of the characters shall occur once in the password
- At least one of the characters must be a number (0-9) or a special character (~,!,\$,#,%,*) – see Table F.2
- At least one of the characters must be from the alphabet (upper or lower case)
- Passwords shall not include:
 - words found in any dictionary (English or other language), spelled forward or backward
 - system User Ids
 - addresses or birthdays
 - common character sequences (e.g., 123, ghijk, 2468)
 - vendor-supplied default passwords (e.g., SYSTEM, Password, Default, USER, Demo)
 - words that others might guess

MCCs shall change passwords at least semi-annually.

To protect passwords from unauthorized disclosure MCCs shall exchange passwords by telephone or facsimile if allowed by security authorities at each MCC. MCCs shall coordinate the exchange of new passwords during the last full work week of April and October of each year. MCCs exchanging passwords shall agree on an implementation date that is not later than the end of the week during which new passwords are exchanged.

Table F.1: FTP Password Special Characters

| SYMBOL | NAME |
|--------|--------------------|
| ~ | TILDE |
| ! | EXCLAMATION POINT |
| @ | AT SYMBOL |
| # | OCTOTHORPE |
| \$ | DOLLAR SIGN |
| % | PERCENT |
| ^ | CHAPEAU / HAT |
| & | AMPERSAND |
| * | ASTERIX |
|) | CLOSE PARENTHESSES |
| (| OPEN PARENTHESSES |
| ` | APOSTROPHE |
| - | HYPHEN |
| “ | QUOTATION |
| / | VIRGULE |

F.3.2 Access

Access permissions on all directories and files on the FTP server shall follow the principle of “least permissions” to ensure that no unauthorized access is allowed. “Least permissions” means that each user is granted the minimum access required to perform their assigned tasks.

MCCs shall check IP addresses to limit server access only to authorized users.

MCCs shall allow access to their FTP servers only through ports 20 and 21. All other ports that are not being used shall be closed.

F.3.3 Anonymous FTP

MCCs shall not use anonymous FTP.

F.3.4 Encryption of Critical Information

MCCs shall implement methodologies to encrypt FTP login names (userids) and passwords during file transmission to prevent unauthorized disclosure. These methodologies include FTP over Internet VPN. Standards for the use of hardware VPN are contained in Annex G.

F.3.5 Monitoring for a Potential Security Breach

MCCs shall monitor the FTP servers for abnormal activity. If a breach of security is found, MCCs shall notify all FTP correspondents as soon as possible to minimize exposure.

Examples of items that should be monitored on a FTP server include:

Event logs

- Should be set and checked for failed login attempts
- Gaps in time and date stamps
- Attempts to elevate privileges

Disk Space

- Unexplained loss of disk space
- Unexplained disk access

Unexplained events

- Large number of failures (system or programs crash)
- Unexplained process or programs running
- New users added
- Virus protection has been disabled

F.3.6 Security Patches

MCCs shall apply the latest software and security patches to their FTP servers as soon as possible.

- END OF ANNEX F -

page left blank

This document has been superseded
by a later version

ANNEX G

COSPAS-SARSAT STANDARD FOR THE TRANSMISSION OF SIT MESSAGES VIA HARDWARE VPN

G.1 INTRODUCTION

A Virtual Private Network (VPN) provides a secure method to transmit information over the Internet. A tunnelling technology such as Internet Protocol IPsec is used to set up private connections between separate sites. A tunnel provides a means for forwarding data across a network from one site to another, as if they were directly connected.

G.2 STANDARDS

G.2.1 Tunnelling

MCCs that use VPN to transmit data via the Internet shall use IPsec. IPsec is a framework of open standards developed by the Internet Engineering Task Force (IETF). IPsec provides security for transmission of sensitive information over the Internet. IPsec acts at the network layer, protecting and authenticating IP packets between participating IPsec devices ("peers"), such as Cisco routers.

IPsec provides the following network security services:

- Data Confidentiality – The IPsec sender can encrypt packets before transmitting them across a network.
- Data Integrity – The IPsec receiver can authenticate packets sent by the IPsec sender to ensure that the data has not been altered during transmission.
- Data Origin Authentication – The IPsec receiver can authenticate the source of the IPsec packets sent. This service is dependent upon the data integrity service.
- Anti-Replay – The IPsec receiver can detect and reject replayed packets.

G.2.2 Mutual Confirmation Method

This step performs the function of a negotiator. It will allow two IPsec nodes to decide which algorithms they will use for authentication and encryption, as well as how long this session will last. The Cospas-Sarsat standard is the PreShared Key Internet Key Exchange (IKE) method.

G.2.3 Code Algorithm (Crypto Algorithm)

This step applies a mathematical formula to the information to be encrypted. MCCs should implement the highest level of encryption that is available on a bilateral basis. Possible choices include:

DES
3DES
CAST128
Blowfish

G.2.4 Confirmation Algorithm

This step applies an algorithm that is used to validate that both ends of a session (MCCs) are in fact who they claim to be. The Cospas-Sarsat standard is the MD5 confirmation algorithm.

G.2.5 Perfect Forward Security

Perfect Forward Security (PFS) should be set to group 1, 2, or 3.

G.2.6 Lifetime

Specify lifetime at an agreed standard time (e.g. 120 minutes).

G.3 HARDWARE CONFIGURATION

Hardware VPN is defined as any piece of commercial or industrial-grade hardware that supports international and non-proprietary VPN standards, for example IPSec. Some possible hardware VPN devices include, but are not limited to Routers, Concentrators, VPN appliances and Firewalls, in any combination.

These devices provide the security called for in section F.3.4 of the FTP standard (Annex F).

- END OF ANNEX G -

ANNEX H

COSPAS-SARSAT STANDARD FOR THE TRANSMISSION OF SIT MESSAGES VIA AFTN

1. INTRODUCTION

The aeronautical fixed telecommunications network (AFTN) is a worldwide system of aeronautical fixed circuits provided, as part of the aeronautical fixed service, for the exchange of messages, and/or digital data between aeronautical fixed stations having the same or compatible communications characteristics. Communication procedures for the AFTN are detailed in Annex 10 to the Convention on International Civil Aviation, Volume II, Communication Procedures, which can be downloaded from the ICAO web site.

AFTN provides a store-and-forward messaging service for the conveyance of text messages, which supports the entire character set authorised for use in Cospas-Sarsat SIT messages.

All AFTN messages include a Transmission Identification (TI) of the form "MSO003" where the TI is comprised of the Channel Identifier (CI) = "MSO" and the Channel Sequence Number (CSN)="003".

Channel checks (heartbeat) are undertaken between an AFTN station and its AFTN communication centre to ensure the link is available and for synchronising of message numbers. These checks are usually undertaken every twenty minutes on the hour and will contain a unique Channel Sequence Number (CSN).

Although the AFTN communications centre ensures that messages are received correctly in terms of the "heading, address, origin and ending syntax" the system does not perform checks to validate the message text. Some MCCs have reported corruption in AFTN messages. The corruption can be quite severe and obvious to the recipient, however at other times they may be extremely difficult to detect.

The ICAO AFTN standard requires long term retention of AFTN traffic records to be maintained for 30 days. The AFTN standard for retaining messages does not obviate the MCC archiving requirement specified in document C/S A.005 (MCC specification).

2. CATEGORIES AND PRIORITIES OF MESSAGES

The AFTN supports the following categories of messages:

- a) distress messages;
- b) urgency messages;
- c) flight safety messages;

- d) meteorological messages;
- e) flight regularity messages;
- f) aeronautical information services (AIS) messages;
- g) aeronautical administrative messages; and
- h) service messages.

Each AFTN message type has an associated message priority. Section 5 provides recommendations in respect of message priorities for the various SIT message types. The highest priority used in the AFTN is SS followed by DD.

Distress messages (priority indicator SS)

This message category comprises those messages sent by mobile stations reporting that they are threatened by grave and imminent danger and all other messages relative to the immediate assistance required by the mobile station in distress.

AFTN requires that messages transmitted with an SS priority be acknowledged using the format defined by ICAO. MCCs should ensure that SS priority messages are acknowledged by the MCC itself. An MCC receiving an SS acknowledgement message will assume that the message to which it referred had been received by the intended recipient. If an acknowledgement has not been received within 15 minutes the transmitting MCC should take appropriate action (e.g. trace the message, retransmit the message, etc.).

Cospas-Sarsat MCCs will use the service message category for acknowledging receipt of SS priority messages. When service messages refer to messages previously transmitted, the priority indicator assigned should be that used for the messages to which they refer.

Urgency messages (priority indicator DD)

This category comprises messages concerning the safety of a ship, aircraft or other vehicles, or of some person on board or within sight.

3. AFTN MESSAGE FORMAT

The AFTN message formats for the International Telegraph Alphabet No.2 (ITA2) and International Alphabet No.5 (IA5) formats are provided in Figures 1 and 2. AFTN messages are comprised of a header, message body (SIT MESSAGE), and trailer. The SIT message is to be inserted into the fields identified as "Message Text" indicated in Figures 1 and 2.

AFTN messages cannot exceed 2100 characters in total, and the content of the SIT message inserted into an AFTN message cannot exceed 1800 characters.

3.1 AFTN Address Indicator

An AFTN address comprises 8 characters of the form:

- a) four-letter location indicator listed in ICAO document, Doc 7910, e.g. YSAR for the Australian RCC/AUMCC, Canberra;
- b) three-letter designator as listed in ICAO document, Doc 8585 e.g., ZSZ (which has been allocated for Sarsat Centre) for the French MCC and YCY for the Norwegian MCC; and
- c) an additional letter which can represent a department, division or process within the organization/function of the originator. The letter X shall be used to complete the eight-letter address when explicit identification is not required.

3.2 Multiple Address Distribution

AFTN includes a facility for distributing messages to multiple addresses. The use of this capability is not recommended for MCC to MCC communications since it reduces the effectiveness of message number sequence checking.

4. EXAMPLES OF AFTN MESSAGES

The following are examples of AFTN messages using the IA5 format:

- a) Example of an SS Priority AFTN Message transmitted by the UKMCC to the FMCC:

```
UKZ003      < Transmission Identification >
SS LFIAZSZX
050021 EGQPZSZX
/55325 00000/2320/04 065 0021
/126/2270/008/01
/2321/-4/+00108.0 001.0 -12.20/04 064 2156 11.05/0
/5/18.756/0000/18
/5116209D1E00104FF6F590000000000
/+273/+56.342/+119.438/000 002.7 001.2/77/00 000 0000/4/001.0 001.0
/+273/+70.036/+037.655/000 007.3 003.1/23/00 000 0000/3/004.0 003.0
/LASSIT
/ENDMSG
```

- b) Example of an SS Priority Acknowledgement Message from FMCC to UKMCC:

```
FRZ457
SS EGQPZSZX
050022 LFIAZSZX
R 050021 EGQPZSZX
```

c) Example of a DD Priority AFTN Message transmitted by the SPMCC to the NMCC:

```
SPZ101
DD ENBOYCYX
260934 GCMPSZSX
/66934 00000/2240/04 054 0934
/115/2570/004/01
/2241/+2/+02400.0 018.2 -25.21/04 054 0919 07.00/0
/3/02.856/0000/01/0247 99
/+257/+55.394/+012.072/088 008.1 004.5/50/04 054 0956/3/005.4 030.8
/+232/+52.975/-013.808/118 008.2 004.6/50/04 054 0956/3/005.2 029.8
/LASSIT
/ENDMSG
```

5. RECOMMENDED SIT MESSAGE AFTN PRIORITIES

Table 1 provides the suggested AFTN priorities for the various SIT message types. MCCs may, on a bilateral basis, use different priorities from those suggested.

Table H.1: Suggested AFTN Priority for SIT Messages

| SIT Number | Type | Suggested Priority | Comments |
|------------|--|--------------------|--|
| 115 | 121.5/243 INCIDENT | DD / SS | Due to possible high false alert rate and the increased message traffic that could result from the mandatory requirement to acknowledge "SS" messages, priority "DD" may be used |
| 117 | 121.5/243 AMBIGUITY RESOLUTION | SS | |
| 121 | 406 INTERFERER NOTIFICATION | DD | |
| 122 | 406 INCIDENT (NO DOPPLER) | SS | |
| 123 | 406 POSITION CONFLICT (ENCODED ONLY) | SS | |
| 124 | 406 AMBIGUITY RESOLUTION (ENCODED ONLY) | SS | |
| 125 | 406 INCIDENT | SS | |
| 126 | 406 POSITION CONFLICT | SS | |
| 127 | 406 AMBIGUITY RESOLUTION | SS | |
| 132 | 406 NOTIFICATION OF COUNTRY OF REGISTRATION (ENCODED ONLY) | DD / SS | |
| 133 | 406 NOTIFICATION OF COUNTRY OF REGISTRATION | DD / SS | |
| 185 | COSPAS-SARSAT DISTRESS ALERTS TO RCCs/SPOCs | DD / SS | |
| 215 | ORBIT VECTORS | DD | |
| 415 | SARP CALIBRATION | DD | |
| 510 | 406 MHz SARR FREQUENCY CALIBRATION OFFSET | DD | |
| 605 | SYSTEM STATUS TO ALL MCCs | SS / DD | Operator to decide dependent upon content |
| 915 | NARRATIVE MESSAGES FOR MCCs | SS / DD | Operator to decide dependent upon content |
| 925 | 406 BEACON REGISTRATION INFORMATION | DD / SS | |

| Message part | Component of the message part | Element of the component | Teletypewriter signal |
|--|--|---|---|
| HEADING (see 4.4.2.1) | Start-of-Message Signal | — | ZCZC |
| | Transmission Identification | { <ul style="list-style-type: none"> a) One SPACE b) Transmitting-terminal letter c) Receiving-terminal letter d) Channel-identification letter e) One FIGURE SHIFT f) Channel-sequence number (3 digits) } (Example: NRA062) | →...↑... |
| | (If necessary) Additional Service Indication | { <ul style="list-style-type: none"> a) One SPACE b) No more than 10 characters } (Example: 270930) | |
| | Spacing Signal | { <ul style="list-style-type: none"> Five SPACES One LETTER SHIFT } | →→→→→↓ |
| ADDRESS (see 4.4.3) | T H E | Alignment Function | One CARRIAGE RETURN, one LINE FEED |
| | | Priority Indicator | The relevant 2-letter group |
| | | Addressee Indicator(s) | One SPACE } given in sequence An 8-letter group } for each addressee (Example: → EGLLRZX→EDLLYKX→EGLLACAM) |
| | | Alignment Function(s) | One CARRIAGE RETURN, one LINE FEED |
| ORIGIN (see 4.4.4) | P E R M A N E N T | Filing Time | One FIGURE SHIFT The 6-digit date-time group specifying when the message was filed for transmission One LETTER SHIFT |
| | | Originator Indicator | One SPACE The 8-letter group identifying the message originator |
| | | Priority Alarm (used only in teletypewriter operation for Distress Messages) | One FIGURE SHIFT Five Signal No. 10 of Telegraph Alphabet No. 2 One LETTER SHIFT |
| | | Alignment Function | One CARRIAGE RETURN, one LINE FEED |
| TEXT (see 4.4.5) | P A R T O F A M E S S A G E | Beginning of the Text | Specific identification of Addressee(s) (if necessary) with each followed by one CARRIAGE RETURN, one LINE FEED (if necessary) The English word FROM (if necessary) (see 4.4.5.2.3) Specific identification of Originator (if necessary) The English word STOP followed by one CARRIAGE RETURN, one LINE FEED (if necessary) (see 4.4.5.2.3); and/or Originator's reference (if used) |
| | | Message Text | Message Text with one CARRIAGE RETURN, one LINE FEED at the end of each printed line of the Text except for the last one (see 4.4.5.3) |
| | | Confirmation (if necessary) | a) One CARRIAGE RETURN, one LINE FEED b) The abbreviation CFM followed by the portion of the Text being confirmed |
| | | Correction (if necessary) | a) One CARRIAGE RETURN, one LINE FEED b) The abbreviation COR followed by the correction of an error made in the preceding Text |
| | | End-of-Text Signal | a) One LETTER SHIFT b) One CARRIAGE RETURN, one LINE FEED |
| | | Page-Feed Sequence | Seven LINE FEEDS |
| | | End-of-Message Signal | Four of the letter case of N (Signal No. 14) |
| ENDING (see 4.4.6) | | Message-Separation Signal (used only on message traffic transmitted to a "torn-tape" station) | Twelve LETTER SHIFTS |
| Tape Feed (see 4.4.7) Additional LETTER SHIFTS will appear at this point in instances where prior arrangements have been made for tape-feed transmissions to be employed on an incoming circuit (see 4.4.7). | | | |
| Legend: ↑ FIGURE SHIFT (Signal No. 30) ≡ LINE FEED (Signal No. 28) ↓ LETTER SHIFT (Signal No. 29) → SPACE (Signal No. 31) < CARRIAGE RETURN (Signal No. 27) | | | |

Figure H.1: Message Format International Telegraph Alphabet No.2 (ITA2)

| Message part | | Component of the message part | Elements of the component | Teletypewriter character |
|--|----------------------------------|--|---|--------------------------|
| T H E H E A D I N G | HEADING LINE (see 4.4.15.1.1) | Start-of-Heading Character | One Character (0/1) | SOH |
| | | Transmission Identification | a) Transmitting-terminal letter b) Receiving-terminal letter c) Channel-identification letter d) Channel-sequence number (Example: NRA082) | |
| | | (if necessary) Additional Service Indication | a) One SPACE b) No more than the remainder of the line (Example: 270930) | → |
| | ADDRESS (see 4.4.15.2.1) | Alignment Function | One CARRIAGE RETURN, one LINE FEED | <≡ |
| | | Priority Indicator | The relevant 2-letter group | .. |
| | | Addressee Indicator(s) | One SPACE An 8-letter group } given in sequence for each addressee (Example: →EGLLRZX→EGLLYKYX→EGLLACAD) | |
| | | Alignment Function(s) | One CARRIAGE RETURN, one LINE FEED | <≡ |
| | ORIGIN (see 4.4.15.2.2) | Filing Time | 6-digit date-time group specifying when the message was filed for transmission | |
| | | Originator Indicator | a) One SPACE b) 8-letter group identifying the message originator | →..... |
| | | Priority Alarm (used only in teletypewriter operation for Distress Messages) | Five characters (0/7)(BEL) | |
| | | Optional Heading Information | Additional data not to exceed the remainder of the line. See 4.4.15.2.2.6. | |
| | | Alignment Function | One CARRIAGE RETURN, one LINE FEED | <≡ |
| | | Start-of-Text Character | One character (0/2) | STX |
| TEXT (see 4.4.15.3) | Beginning of the Text | | Specific identification of Addressee(s) (if necessary) with each followed by one CARRIAGE RETURN, one LINE FEED (if necessary) The English word FROM (if necessary) (see 4.4.15.3.5) Specific identification of Originator (if necessary) The English word STOP followed by one CARRIAGE RETURN, one LINE FEED (if necessary) (see 4.4.15.3.5) and/or Originator's reference (if used) | |
| | Message Text | | Message Text with one CARRIAGE RETURN, one LINE FEED at the end of each printed line of the Text except for the last one (see 4.4.15.3.6) | |
| | Confirmation (if necessary) | | a) One CARRIAGE RETURN, one LINE FEED b) The abbreviation CFM followed by the portion of the Text being confirmed | |
| | Correction (if necessary) | | a) One CARRIAGE RETURN, one LINE FEED b) The abbreviation COR followed by the correction of an error made in the preceding Text | |
| | Alignment Function | | One CARRIAGE RETURN, one LINE FEED | <≡ |
| ENDING (see 4.4.15.3.12.1) | Page-feed Sequence | | One character (0/11) | VT |
| | End-of-Text character | | One character (0/3) | ETX |

Figure H.2: Message Format International Alphabet No.5 (IA5)

- END OF ANNEX H -

ANNEX I

IMPLEMENTATION PLAN FOR NEW COMMUNICATION LINKS

I.1 IMPLEMENTATION PHASES

I.1.1 Phase I - Internal Development and Testing

In order to implement a new communication link, each MCC must begin with a phase of internal development and testing. This may require the procurement of communication equipment, specialized hardware, physical connections and/or other communication provider services.

The key purpose of this phase is to ensure that the new communication link is properly installed, configured and coded. Ideally, a capability should be available within the MCC environment to facilitate near “real world” testing. Completion of comprehensive development and testing is essential before proceeding to subsequent phases.

I.1.2 Phase II - Nodal Level Testing and Activation

Nodal MCCs operate as central entities or “hubs” in the Cospas-Sarsat Network and should be capable of handling any new communication link or protocol. There is limited benefit for an MCC within a DDR to implement a protocol that the nodal MCC does not yet support.

Nodal MCCs can in effect validate the new communication link while also establishing it at the core level of the Cospas-Sarsat System Network. Lessons learned and resulting adjustments made can be passed along to other MCCs to minimize costs resulting from redundant efforts. During this phase each nodal MCC coordinates bilaterally, first testing and then activating each link.

I.1.3 Phase III - DDR Level Testing and Activation

This phase provides for establishing a new communication protocol between the nodal MCC and each of the MCCs within its DDR. When this phase starts, the nodal MCC will have operational links with most other nodal MCCs, and the experience gained should facilitate efforts under Phase III.

I.1.4 Phase IV - System Wide Testing and Activation

This phase provides for establishing links between MCCs as well as between MCCs and SPOCs (or RCCs) as appropriate. The intent is to test and activate all links outside the standard nodal configuration, most importantly the connections between additional MCC pairings to support the transmission of Cospas-Sarsat narrative traffic. Communication agreements between neighbouring MCCs shall be addressed during this phase.

I.2 IMPLEMENTATION PLAN TO ADDRESS TERMINATION OF X.25

I.2.1 Introduction

Although the details vary for each MCC, the X.25 protocol will no longer be commercially available in many locations beyond 2005. For example, the USMCC anticipates the phase-out of X.25 by 1 September 2005. In order to ensure the reliability and integrity of the Cospas-Sarsat System, it is necessary to address this situation with a specific and complete implementation plan which follows the phases outlined above. The following plan addresses the implementation of AFTN and FTP over Internet VPN (FTPV) by MCCs.

I.2.2 Implementation Plan Structure

Each MCC should have at least two functional communication links, a primary and a backup, for every other MCC with which they must communicate. This implementation plan requires that two links be identified, other than X.25, as the primary and secondary links between the various MCC pairings. Each of the identified protocols must be fully implemented and thoroughly tested according to the schedule defined in the tables provided below.

Implementation schedules in Tables I.1 and I.2 indicate planned dates for nodal level testing and activation of AFTN and FTPV, per Phase II of the implementation plan. Target implementation dates of April 2005 for FTPV and April 2006 for AFTN are observed.

Implementation schedules for activation and testing AFTN and FTPV within each DDR (Phase III) follow in Tables I.3 through I.7. It should be noted that Phase III could begin before Phase II is completed.

I.2.3 Schedule

Notes: FTPV = FTP over Internet VPN
 AFTN = Aeronautical Fixed Telecommunication Network

Table I.1: Nodal to Nodal Communications Activation / Verification Check List

| MCC | CMC | FMCC | JAMCC | USMCC | SPMCC |
|--------------|--------------------|--------------------|--------------------|--------------------|--------------------|
| AUMCC | FTPV (in place) | FTPV (in place) | FTPV (in place) | FTPV (in place) | FTPV (in place) |
| | AFTN (in place) | AFTN (in place) | AFTN (in place) | AFTN (in place) | AFTN (in place) |
| | E-mail* T.B.D. | E-mail* T.B.D. | E-mail* T.B.D. | E-mail* T.B.D. | E-mail* T.B.D. |
| CMC | | FTPV (in place) | FTPV (in place) | FTPV (in place) | FTPV (in place) |
| | | AFTN (in place) | AFTN (in place) | AFTN (in place) | AFTN (in place) |
| | | | | | |
| FMCC | | | FTPV (in place) | FTPV (in place) | FTPV (in place) |
| | | | AFTN (in place) | AFTN (in place) | AFTN (in place) |
| | | | | | |
| JAMCC | | | | FTPV (in place) | FTPV (in place) |
| | | | | AFTN (in place) | AFTN (in place) |
| | | | | | |
| USMCC | | | | | FTPV (in place) |
| | | | | | AFTN (in place) |
| | | | | | |

Note: * Not an approved means of communications.

Table I.2: Target Implementation Dates for Nodal MCC Communications

| MCC | AFTN | FTPV |
|--------------|----------|----------|
| AUMCC | In place | In place |
| CMC | In place | In place |
| FMCC | In place | In place |
| JAMCC | In place | In place |
| SPMCC | In place | In place |
| USMCC | In place | In place |

**Table I.3 - Phase III: Western DDR Communications Activation / Verification
Check List**

| MCC | USMCC |
|-------|-----------------|
| ARMCC | AFTN - in place |
| | FTPV - in place |
| | Link3 - N/A |
| BRMCC | AFTN - in place |
| | FTPV - in place |
| | Link 3 - N/A |
| CHMCC | AFTN - in place |
| | FTPV - in place |
| | Link 3 - N/A |
| CMCC | AFTN - in place |
| | FTPV - in place |
| | Link 3 - N/A |
| PEMCC | FTPV - in place |
| | Link2 dd mmm |
| | Link3 dd mmm |

Note: All Link3 entries are optional.

**Table I.4 - Phase III: Central DDR Communications Activation/Verification
Check List**

| MCC | GRMCC | ITMCC | NMCC | TRMCC | UKMCC |
|-------|--------------------|--------------------|--------------------|--------------------|--------------------|
| FMCC | AFTN (in place) | AFTN (in place) | AFTN (in place) | AFTN (in place) | AFTN (in place) |
| | FTPV (in place) | FTPV (in place) | FTPV (in place) | FTPV (in place) | FTPV (in place) |
| | Link3 – N/A | Link3 dd mmm | Link3 dd mmm | Link3 dd mmm | Link3 dd mmm |
| GRMCC | | AFTN (in place) | AFTN (in place) | AFTN (in place) | AFTN (in place) |
| | | FTPV (in place) | FTPV (in place) | FTPV (in place) | FTPV (in place) |
| | | Link3 – N/A | Link3 – N/A | Link3 – N/A | Link3 – N/A |
| ITMCC | | | AFTN (in place) | FTPV (in place) | AFTN (in place) |
| | | | FTPV (in place) | AFTN (in place) | FTPV (in place) |
| | | | X.25 (in place) | X.25 (in place) | X.25 (in place) |
| NMCC | | | | FTPV (in place) | AFTN (in place) |
| | | | | AFTN (in place) | FTPV (in place) |
| | | | | X.25 (in place) | X.25 (in place) |
| TRMCC | | | | | FTPV (in place) |
| | | | | | AFTN (in place) |
| | | | | | X.25 (in place) |

Note: All Link3 entries are optional.

**Table I.5 - Phase III: Eastern DDR Communications Activation / Verification
Check List**

| MCC | CMC |
|-------|-----------------|
| INMCC | AFTN (in place) |
| | FTPV (in place) |
| | Link3 dd mmm |
| PAMCC | Link1 dd mmm |
| | Link2 dd mmm |
| | Link3 dd mmm |

Note: All Link3 entries are optional.

**Table I.6 - Phase III: South West Pacific DDR Communications Activation /
Verification Check List**

| MCC | AUMCC |
|-------|-----------------|
| ASMCC | FTPV (in place) |
| | AFTN (in place) |
| | E-mail* T.B.D. |
| IDMCC | FTPV (in place) |
| | AFTN (in place) |
| | E-mail* T.B.D. |
| SIMCC | FTPV (in place) |
| | AFTN (in place) |
| | E-mail* T.B.D. |
| THMCC | FTPV (in place) |
| | AFTN (in place) |
| | E-mail* T.B.D. |

Note: All Link3 entries are optional.

* Not an approved means of communications.

**Table I.7 – Phase III: North West Pacific DDR Communications Activation /
Verification Check List**

| MCC | JAMCC |
|--------------|-----------------|
| CNMCC | FTPV T.B.D. |
| | AFTN (in place) |
| | Link3 dd mmm |
| HKMCC | FTPV (in place) |
| | AFTN (in place) |
| | Link3 dd mmm |
| KOMCC | FTPV (in place) |
| | AFTN T.B.D. |
| | Link3 dd mmm |
| TAMCC | FTPV (in place) |
| | AFTN (in place) |
| | Link3 dd mmm |
| VNMCC | FTPV (in place) |
| | AFTN (in place) |
| | Link3 dd mmm |

Note: All Link3 entries are optional.

**Table I.8 - Phase III: South Central DDR Communications Activation/Verification
Check List**

| MCC | SPMCC |
|--------------|-----------------|
| AEMCC | FTPV (in place) |
| | AFTN (in place) |
| | Link3 dd mmm |
| ALMCC | AFTN (in place) |
| | FTPV (in place) |
| | X.25 (in place) |
| NIMCC | AFTN (in place) |
| | FTPV (in place) |
| | Link3 dd mmm |
| SAMCC | AFTN (in place) |
| | FTPV (in place) |
| | Link3 dd mmm |

Note: All Link3 entries are optional.

- END OF ANNEX I -

ANNEX J**LIST OF ABBREVIATIONS AND ACRONYMS USED IN C/S A.002**

| | |
|--------|--|
| AFTN | Aeronautical Fixed Telecommunication Network |
| AM | amplitude modulation |
| AMHS | Aeronautical Message Handling System |
| AVI | aviation |
| CCITT | International Telecommunication Union's (ITU) International Telegraph and Telephone Consultative Committee |
| CI | channel identifier |
| CID | caller identification |
| COSPAS | space system for the search of vessels in distress |
| CR | carriage return |
| CSC | Cospas-Sarsat Council |
| CSN | channel sequence number |
| CTA | cross track angle |
| CUD | call user data |
| DD | priority indicator |
| DTG | date time group |
| E | east |
| ELT | emergency locator transmitter |
| EPIRB | emergency position indicating radio beacon |
| FTP | file transfer protocol |
| HEX | hexadecimal |
| HRS | hours |
| Hz | hertz |
| ID | identification |
| INFO | information |
| IA5 | international alphabet No.5 |
| IP | Internet protocol |
| IPSec | Internet protocol security |
| ITA2 | international telegraph alphabet No.2 |
| ITC | invitation to clear |
| JC | Cospas-Sarsat Joint Committee |
| km | kilometer |
| LAT | latitude |
| LF | line feed |
| LONG | longitude |
| LOS | loss of signal |
| LUT | local user terminal |
| MAR | maritime |
| MCC | mission control centre |

| | |
|--------|---|
| MF | message field |
| MHz | megahertz (1,000,000 hertz) |
| MID | maritime identification digits |
| MIN(S) | minute(s) |
| mSec | millisecond |
| MSG | message |
| mW | milliwatt |
| N | north |
| NL | new line |
| NOCR | notification of country of beacon registration |
| PAD | packet assembler/disassembler |
| PLB | personal locator beacon |
| PROB | probability |
| PSDN | public switched data network |
| RCC | rescue co-ordination centre |
| S | south |
| SAR | search and rescue |
| SARP | search and rescue processor |
| SARR | search and rescue repeater |
| SARSAT | search and rescue satellite aided tracking |
| SEC(S) | second(s) |
| SER | serial |
| SID | Standard Interface Description |
| SIT | subject indicator type |
| SPEC | specification |
| SPOC | SAR point of contact |
| SRR | Search and Rescue Region |
| SS | priority indicator |
| TCA | time of closest approach |
| TI | transmission identification |
| TX | transmitted |
| USO | ultra-stable oscillator |
| UTC | co-ordinated universal time |
| VPN | virtual private network |
| W | west |
| X.25 | ITU-T specification and protocols for public packet-switched networks |

- END OF ANNEX J -

- END OF DOCUMENT -

This document has been superseded
by a later version

This document has been superseded
by a later version

Cospas-Sarsat Secretariat
700 de la Gauchetière West, Suite 2450, Montreal (Quebec) H3B 5M2 Canada
Telephone: +1 514 954 6761 Fax: +1 514 954 6750
Email: mail@cospas-sarsat.int
Website: <http://www.cospas-sarsat.org>
